



ASSEMBLY EQUIPMENT PRODUCT CATALOGUE 2026

TABLE OF CONTENTS

TABLE OF CONTENTS	1
A GLOBAL REPUTATION	2
SAFETY GUIDE	7
CUTTING MACHINES.....	8
SKIVING MACHINES	19
INSERT PUSHING MACHINES	25
MARKING MACHINES.....	28
CRIMPING MACHINES.....	30
TEST BENCHES.....	59
INDUSTRIAL MACHINES	62
COMPLEMENTARY PRODUCTS	65
DIE SETS	68
HOSE & FITTINGS.....	94

A GLOBAL REPUTATION

“Manuli Hydraulics is focused on achieving excellence in the design, manufacture, and supply of fluid conveyance solutions, components and associated equipment for high pressure hydraulics, industrial material conveyance, refrigeration and cooling applications.”



Our experienced Research & Development team take 2D drawings to 3D models to real life products.



Our world-class hoses, fittings and assembly equipment are manufactured in-house to the highest standards.



We test and validate our products to meet and exceed technical industry standards.



We provide the complete solution: hoses, fittings, crimping parameters and assembly equipment for a fully integrated system.



We supply fluid conveyance solutions directly to our customers whenever and wherever they are.

From design to manufacture, and assembly, Manuli Hydraulics’ continual commitment to this unified philosophy makes us a global leader in providing integrated solutions for fluid and material transfer connector applications including hydraulics, refrigeration & air conditioning, oil & gas, water and industrial low-pressure.

Manuli Hydraulics offer a complete range of hoses, fittings and assembly equipment which are purposely designed to work seamlessly together. This harmonized approach allows us to guarantee the quality and performance of our hose assemblies.

Every metre of hose and every single fitting is backed by industry knowledge and experience, made available to you through our dedicated team of application engineers.

From advice on component selection and configuration, our technical expertise allows us to support and work directly with our customers whenever and wherever they are based.

MANULI ASSEMBLY EQUIPMENT

Manuli Hydraulics has always prided itself on its integrated approach of the design, manufacture, and supply of flexible connector solutions, ensuring that every single hose and fitting is part of a unified approach which guarantees safety, reliability and performance. This unified approach also includes the assembly equipment used to build hose assemblies.

The creation of high-quality, reliable hose assemblies for hydraulics, refrigeration and industrial applications requires more than just simple tools and a basic knowledge of how to put the components together. The Manuli Equipment Unit combines cutting-edge assembly equipment with decades of experience and knowledge of what makes a great hose assembly.

The Manuli Hydraulics Assembly Equipment product range covers every stage of the hose assembly process at all operational scales. So whether you assemble 10 or 10,000 hoses a week, the Manuli Equipment range has an entire range of products suited to your needs.

START TO FINISH ASSEMBLY SOLUTIONS

When you assemble a hose there are several critical points in the process which can determine the success or failure of the assembly in use. Our knowledge and experience of hose assembly processes, combined with our unique level of control over the components, allows us to guarantee the quality and reliability of any genuine Manuli hose assembly to a degree that no other hose manufacturer can.

The Manuli Equipment product range covers all stages of the hose assembly process, providing a “start to finish” portfolio that allows us to supply equipment to any assembler, regardless of operation size, hose type and location.



FIELD SERVICE & MOBILE WORKSHOP 12V/24V

A compact and robust line up to 2", perfect for on-site repair. The hand crimper, MHP 80 EVO, offers accessibility to all sites. A complete 12V line delivers hose assembly quality equal to the one obtained in a workshop.

MPH 80 EVO (Pg.25)

- Capacity: 1" 2 WB
- Compact
- Lightweight
- Easy to use
- Balanced design
- Dual stage pump

MH SKY (Pg.13)

- Capacity: 2"
- Economic
- Simple
- Compact
- Robust
- Plug'n skive system



MV 137 (Pg.36)

- Capacity: 1 1/4" 4WS
- Robust and compact design
- Lightweight
- High crimping speed
- Suitable also for 90° elbow fittings
- Cylinder protection
- Remote head mounting option possible

MV 22 CUT (Pg.2)

- Capacity: 1 1/4" 4WS
- Smooth bending system
- 90° cut
- Clean cut
- Scalloped blade
- Dust collector included
- Multiple voltage options

EXPERT SERVICE LINE

A result of our collaboration with OEM assemblers and hose manufacturers, our expert workshop combines power, reliability, speed, openness and comfort. Manuli Hydraulics is now the most innovative manufacturer in machines dedicated to OEM, providing (for instance) the Safe Crimp System which guarantees a constant control of hose assemblies.

M 90 CUT (Pg.10)

- Capacity: 3" 6WS
- Very powerful
- Heavy duty for difficult cuts
- Hydraulic bending
- Brake motor
- Electronic soft start

M 300 SKY (Pg.15)

- Capacity: 3" 6WS
- Plug'n skive system
- Large dust collector
- Robust & easily adjustable knife for quick and easy changeover
- Suitable for high volume production
- 2-way rotation



M 1500 INS (Pg.19)

- Capacity: a ll hydraulic hoses from 3/4" up to 2"
- Interlock
- Compact
- Sturdy
- Powerful
- Hydro pneumatic power pack

MS 480 (Pg.42)

- Capacity: 3" 6WS
- High crimp force
- Large opening
- Safe Crimp System (SCS) control
- Wide family of dies for industrial hoses
- Long master dies
- Robust
- Low noise level
- Easy die set-up with ergonomic gun

INDUSTRIAL WORKSHOP

A workshop developed on a complete range of Industrial crimpers combining power, openness, ergonomics and solutions for handling large diameters. This workshop increases your potential of opportunities. It allows you to prospect many and various markets and thus amortize your investment quickly. Our knowledge of the activity constraints led us to offer ergonomic solutions adapted to the handling of large diameters.



MS 800 (Pg.43)

- Capacity: 4" 4WS / 3" 6WS / 8" Industrial
- Designed for heavy duty large bore hydraulic hoses
- High power and speed
- Ergonomically designed for large bore hoses
- Safe Crimp System (SCS) for maximum reliability during the crimping process
- Large opening up to 8"
- Long master dies
- Very high crimping force

SAFETY GUIDE**SAFETY GUIDE**

Manuli Hydraulics hose and fitting products must be assembled in strict accordance with Manuli Hydraulics instructions and limitations. Don't mix and match: always use Manuli Hydraulics original hoses and fittings. Manuli Hydraulics hose, fittings, and assembling machines are tested as an effective and reliable system. The use of different products and machines will affect and nullify any representation and/or warranty on products, their features and/or performance that may have been provided, and may cause premature hose failures, property damage, serious injury or death for which Manuli Hydraulics does not assume any responsibility and/or liability at any title whatsoever. Inside our Digital Crimp Tools, you can find the only official technical crimping parameters relating to our products and/or services. Therefore, please be sure to use the latest version of our Crimp App and Web Tool.

MANULI HYDRAULICS MAKES NO REPRESENTATIONS AND/OR WARRANTIES, EXPRESS OR IMPLIED, AND ASSUMES NO RESPONSIBILITY AND/OR LIABILITY FOR ANY LOSS OR DAMAGE, WHETHER DIRECT, INDIRECT, CONSEQUENTIAL OR INCIDENTAL WHICH MIGHT ARISE OUT FROM, OR IN CONNECTION WITH, IMPROPER AND/OR INCORRECT USE OF ITS PRODUCTS AND/OR ASSEMBLY EQUIPMENT OR FROM ANY USE OF CRIMPED HOSE ASSEMBLIES NOT PRODUCED FROM GENUINE RYCO HOSE FITTINGS, HOSE AND EQUIPMENT, AND, IN GENERAL, NOT IN ACCORDANCE WITH OUR PROCESS SPECIFICATIONS FOR EACH SPECIFIC PRODUCT AND/OR ASSEMBLY EQUIPMENT.

DISCLAIMERS

We reserve the right to modify our products and/or related services and/or discontinue the manufacture and/or supply of any of the products and/or related services, without notice. No product is warranted as being fit for a particular purpose and we do not assume any liability in connection with the use of our products other than those technically approved in writing by us, or specified in the relevant official technical specifications released by us, for specific products. This document supersedes all previous versions and previously issued documentation. The only official source of technical crimping parameters regarding our products is our Digital Crimp Tools. Printed copies are uncontrolled therefore, please be sure to use the latest versions of our [Manuli Hydraulics Crimp App](#) or visit our [Crimp Web Tool](#). For more information, please visit our dedicated '[Contact](#)' page on the [Manuli Hydraulic's website](#).

INTRODUCTION



Our dedicated range of hose cutting machines produce a high-quality cut even through the toughest hose structures. With a selection of cutting blade styles available, there's no job that our cutting machines can't cope with.

M 22 CUT / MV 22 CUT

STARTER WORKSHOP
BENCHTOP MOBILE CUTTING MACHINE



KEY FEATURES

- Smooth bending system
- 90° cut
- Clean cut
- Scalloped blade
- Dust collector included
- Multiple voltage options

STANDARD



Scalloped Blade



Dust Collector

TECHNICAL SPECIFICATIONS

CAPACITY

2wb: 1¼" max.

4ws: 1¼" max.

ROTATION SPEED

3000 rpm

SCALLOPED BLADE DIAMETER

254 mm (10") included

MAX HOSE OD.

50 mm (1.969")

MOTOR

2.2 kW

VOLTAGES

220/240 V, 1Ph, 50/60 Hz

380/415 V, 3Ph, 50 Hz

110 V, 1Ph, 60Hz

208/240 V, 3Ph, 60 Hz

12/24 V also available upon request.

DIMENSIONS

630 x 485 x 650 mm

(25 x 19 x 26")

PACKAGING

800 x 600 x 830 mm

(31 x 24 x 33")

NET WEIGHT

42 kg (93 lb)

GROSS WEIGHT

58 kg (128 lb)

TECHNICAL FEATURES

Dimensions van type machine:

488 x 630 x 650 mm

(19.2 x 24.8 x 25.6");

38 kg (84 lb)

Single-phase S3 25% service factor.

OPTIONAL



Battery



Slotted Blade



Smoke Extractor
*except version 12/24V

M 30 CUT E

STARTER & PROFESSIONAL WORKSHOP
BENCHTOP CUTTING MACHINE, OPTIONAL SKIVING

CUTTING
MACHINES
10

KEY FEATURES

- Compact design
- Easy and safe to use
- Versatile, scalloped blade for high performance and efficient cutting with minimal smoke



STANDARD



Scalloped Blade

TECHNICAL SPECIFICATIONS

CAPACITY

2wb: 2" max.
4ws: 2" max.
6ws: 1¼" max.
Industrial: 2" max.

VOLTAGES

220/240 V, 1Ph, 50/60 Hz
220/240 V, 3Ph, 50 Hz
380/415 V, 3Ph, 50 Hz
208/240 V, 3Ph, 60 Hz
Other voltages available on request

ROTATION SPEED

3000 rpm

DIMENSIONS

835 x 545 x 640 mm
(33 x 21 x 25")

SCALLOPED BLADE DIAMETER

300 mm (11.8")

PACKAGING

1170 x 770 x 1100 mm
(46 x 30 x 43")

MAX HOSE OD.

85 mm (3.346")

MOTOR

3.0 kW

NET WEIGHT

75 kg (165 lb)

GROSS WEIGHT

90 kg (198 lb)

OPTIONAL



Cutting Rail



Slotted Blade



Smoke Extractor

M 30 CUT L

STARTER & PROFESSIONAL WORKSHOP
STAND TYPE CUTTING MACHINE



KEY FEATURES

- Compact design
- Easy and safe to use
- Scalloped blade for clean cut
- High performance and efficient cutting with minimal smoke
- Ergonomic, easy to clean
- Integrated dust collector

CUTTING MACHINES 11

STANDARD



Smoke Suction Connector



2 Dust Collectors



Scalloped Blade

TECHNICAL SPECIFICATIONS

CAPACITY

2wb: 2" max.
4ws: 2" max.
6ws: 1¼" max.
Industrial: 2"

VOLTAGES

220/240 V, 1Ph, 50/60 Hz
220/240 V, 3Ph, 50 Hz
380/415 V, 3Ph, 50 Hz
208/240 V, 3Ph, 60 Hz
Other voltages available on request.

ROTATION SPEED

3000 rpm

DIMENSIONS

765 x 500 x 1150 mm
(30 x 20 x 45")

SCALLOPED BLADE DIAMETER

254 mm (10")

PACKAGING

800 x 600 x 1200 mm
(32 x 24 x 47")

MAX HOSE OD.

85 mm (3.34")

MOTOR

3.0 kW

NET WEIGHT

92 kg (203 lb)

GROSS WEIGHT

120 kg (265 lb)

Single-phase S3 25% service factor.

OPTIONAL



Cutting Rail



Slotted Blade



Smoke Extractor

M 30 CUT & SKIVE

STARTER & PROFESSIONAL WORKSHOP
BENCHTOP, INTEGRATED CUTTING & SKIVING

CUTTING
MACHINES
12



KEY FEATURES

- Compact design
- Two operations in one machine
- Easy and safe to use
- Versatile, scalloped blade for high performance and efficient cutting with minimal smoke
- Dust free skive operation (drawers for dust collection)
- Electronic brake

STANDARD



Scalloped Blade



2 Dust Collectors

TECHNICAL SPECIFICATIONS

CAPACITY

2wb: 2" max.
4ws: 2" max.
6ws: 1¼" max.
Industrial: 2" max.

VOLTAGES

220/240 V, 1Ph, 50/60 Hz
220/240 V, 3Ph, 50 Hz
380/415 V, 3Ph, 50 Hz
208/240 V, 3Ph, 60 Hz
Other voltages available on request.

ROTATION SPEED (CUT)

3000 rpm

DIMENSIONS

835 x 545 x 640 mm

ROTATION SPEED (SKIVE)

200 rpm

(33 x 21 x 25")

SCALLOPED BLADE DIAMETER

300 mm (11.8")

PACKAGING

1170 x 770 x 1100 mm

MAX HOSE OD.

85 mm (3.34")

NET WEIGHT

85 kg (187 lb)

MOTOR

2.2 kW

GROSS WEIGHT

100 kg (220 lb)

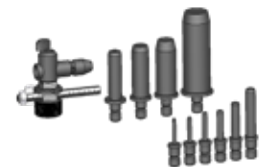
TECHNICAL FEATURES

Skiving tools for External Skiving (ESE) and for Internal Skiving (IS) to be ordered separately.

OPTIONAL



Cutting Rail



Tool Kit ESE



Tool Kit IS



Smoke Extractor

M 40 CUT AUTO

- Provided with its own automatic and tiltable decoiler, the M 40 CUT AUTO is the ideal tool for OEM hose assemblers.
- Featured with 4 feeding tubes for hydraulic hoses with OD up to 1" 4SP, and an infinite number of cutting operations, it enables a fast, easy and accurate production process.



CUTTING MACHINES 13

TECHNICAL SPECIFICATIONS

MOTOR	VOLTAGE
1.6 kW	380/415V - 3Ph - 50/60 Hz
TILTING	DIMENSIONS
0 - 90°	1400 x 1250* x 1600 mm
PLATE DIAMETER	WEIGHT
1200 mm	310 kg
MAXIMUM LOAD	ROTATION SPEED
250 kg	0-60 tr/min
COIL INTERNAL DIAMETER	
200 - 600 mm	
*2300 mm with automatic tensioner.	

OPTIONAL SPECIFICATIONS

FEEDING TUBES INTERNAL DIAMETER	
11 mm - 3/16" 1SN max.	31 mm - 3/4" 2SN max.
21 mm - 1/2" 2SN max.	41 mm - 1" 4SP max.
SLOTTED* BLADE DIAMETER	
400 mm	
MOTOR	VOLTAGE
4.5 kW	380/415V - 3Ph - 50/60 Hz
MINIMUM CUTTING LENGTH	
150 mm	
FEEDING SPEED	ACCURACY
0.5 m/s	± 1 %
MINIMUM AIRE PRESSURE	
6 bar	
WEIGHT	DIMENSIONS
380 kg	1100 x 800 x 1500 mm
*Smooth blade available	



For a safer environment when using the machine, a smoke extractor can be connected to the M 40 CUT AUTO.

M 55 CUT L

BASIC AND PROFESSIONAL WORKSHOP CUTTING MACHINE

CUTTING MACHINES 14



KEY FEATURES

- Compact design
- Easy and safe to use
- Scalloped blade for clean cut
- High performance and efficient cutting with minimal smoke
- Ergonomic, easy to clean
- Integrated dust collector

STANDARD



Slotted Blade



Dust Collector



Smoke Suction Connector

TECHNICAL SPECIFICATIONS

CAPACITY*

- 2wb: 3" max.
- 4ws: 2-1/2" max.
- 6ws: 2" max.
- Industrial: 3" max.

VOLTAGES

- 220/240 V, 1Ph, 50/60 Hz
- 220/240 V, 3Ph, 50 Hz
- 380/415 V, 3Ph, 50 Hz
- 208/240 V, 3Ph, 60 Hz
- Other voltages available on request.

ROTATION SPEED

3000 rpm

DIMENSIONS

830 x 520 x 1160 mm
(33 x 20 x 46")

SCALLOPED BLADE DIAMETER

400 mm (15.7")

TECHNICAL SPECIFICATIONS

Diameter of suction connector : 125 mm (5")

MAX HOSE OD.

95 mm (3.74")

MOTOR

5.5 kW

NET WEIGHT

135 kg (298 lb)

* Indicative capacities depending on hose type.

OPTIONAL



Cutting Rail



Decoiler



DV 32



Scalloped Blade



Smooth Blade



Smoke Extractor

M 55 CUT/P

EXPERT SERVICE LINE
STAND TYPE CUTTING MACHINE

KEY FEATURES

- Versatile, slotted blade for high performance with minimal smoke
- Ergonomic and functional design
- Double foot pedal system
- Safety cover and feeding guides for hose (easy and fast cutting operation)
- Digital counter for maintenance assistance
- Adjustable speed for cutting on pneumatic version



Classic Version

STANDARD



Control Panel



Slotted Blade



Feeding Guide



Dust Collector

TECHNICAL SPECIFICATIONS

CAPACITY

2wb: 2" max.

4ws: 2" max.

6ws: 2" max.

Industrial: 2"

ROTATION SPEED

3000 rpm

SLOTTED BLADE DIAMETER

400 mm (15.7")

MAX HOSE OD.

80 mm (3.15")

MOTOR

7.5 kW

VOLTAGES

220/240 V, 1Ph, 50/60 Hz

220/240 V, 3Ph, 50 Hz

380/415 V, 3Ph, 50 Hz

208/240 V, 3Ph, 60 Hz

Other voltages available on request.

DIMENSIONS

1140 x 1000 x 1280 mm

(45 x 39 x 50")

PACKAGING

1600 x 1200 x 1600 mm

(63 x 47 x 63")

NET WEIGHT

240 kg (529 lb)

GROSS WEIGHT

280 kg (617 lb)

TECHNICAL FEATURES

Diameter of the suction connection: 150 mm (6")

Options: Pneumatic bending system, scalloped blade

OPTIONAL



Cutting Rail



Decoiler



Smooth blade



DV 32



Smoke Extractor

M 75 CUT/P

EXPERT SERVICE LINE
STAND TYPE CUTTING MACHINE

CUTTING
MACHINES
16



Pneumatic Version



Manual Version

KEY FEATURES

- Very powerful
- Heavy duty for difficult cuts
- Resistant for extreme cuts
- New design:
 - Easy maintenance
 - Efficiency for smoke extraction
- Motor brake
- Pneumatic version (option)
- Option for industrial hose:
 - Blade 540 mm for hoses with external OD max 150 mm

STANDARD



Slotted Blade

TECHNICAL SPECIFICATIONS

CAPACITY	VOLTAGES
2wb: 3" max.	220/240 V, 1Ph, 50/60 Hz
4ws: 2" max.	220/240 V, 3Ph, 50 Hz
6ws: 2" max.*	380/415 V, 3Ph, 50 Hz
ROTATION SPEED	208/240 V, 3Ph, 60 Hz
3000 rpm	DIMENSIONS
SLOTTED BLADE DIAMETER	910 x 820 x 1280 mm
520 mm (20.5") included	(36 x 32 x 50")
MAX HOSE OD.	NET WEIGHT
125 mm (5")**	215 kg (474 lb)
MOTOR	TECHNICAL FEATURES
7.5 kW	Diameter of suction connection: 130 mm
	Electronic soft start
	Optional tool: 2
	Pneumatic version
	Other blade on demand

*Minimum air pressure : 9,5 bar
**150 mm with blade option 540 mm

OPTIONAL



Cutting Rail



Decoiler



Smooth Blade



DV 32



Smoke Extractor

M 90 CUT

EXPERT SERVICE LINE
STAND TYPE CUTTING MACHINE



KEY FEATURES

- Very powerful
- Heavy duty for difficult cuts
- Hydraulic bending
- Motor brake
- Electronic soft start
- Smoke suction integrated in cutting table

STANDARD STANDARD



Slotted Blade



Production Counters



Smoke Suction Connector



CME Electrical Footswitch

TECHNICAL SPECIFICATIONS

CAPACITY

2wb: 3 ½" max.
4ws: 3 ½" max.
6ws: 3" max.
Industrial: 5" max.

VOLTAGES

220/240 V, 1Ph, 50/60 Hz
220/240 V, 3Ph, 50 Hz
380/415 V, 3Ph, 50 Hz
208/240 V, 3Ph, 60 Hz

ROTATION SPEED

3000 rpm

DIMENSIONS

1000 x 1060 x 1350 mm
(39 x 42 x 53")

SLOTTED BLADE DIAMETER

520 mm (20.5") included

MAX HOSE OD.

125 mm (5")

NET WEIGHT

260 kg (573 lb)

MOTOR

9.0 kW

TECHNICAL FEATURES

Diameter of suction connection: 110 mm (4.33")

OPTIONAL



Cutting Rail



Decoiler



DV 32



Smoke Extractor

ACCESSORIES AND TOOLS

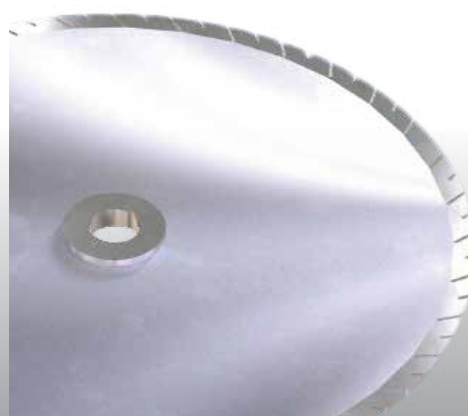
CUTTING DISCS

The scalloped blade is suitable for all hose types. It is able to reach a high quality of cutting surface and is the standard on 254 and 300 mm blades.



SLOTTED BLADE TYPE

The slotted blade is recommended for cutting standard and heavy duty hoses. It is ideal for continuous service, as the blade profile has been optimised to maintain a low temperature on the cutting edge. This blade provides an extended operational life of up to 2 times superior to the previous blade, and is the standard on 400 and 520 mm blades. It is optional on diameter 254 mm.



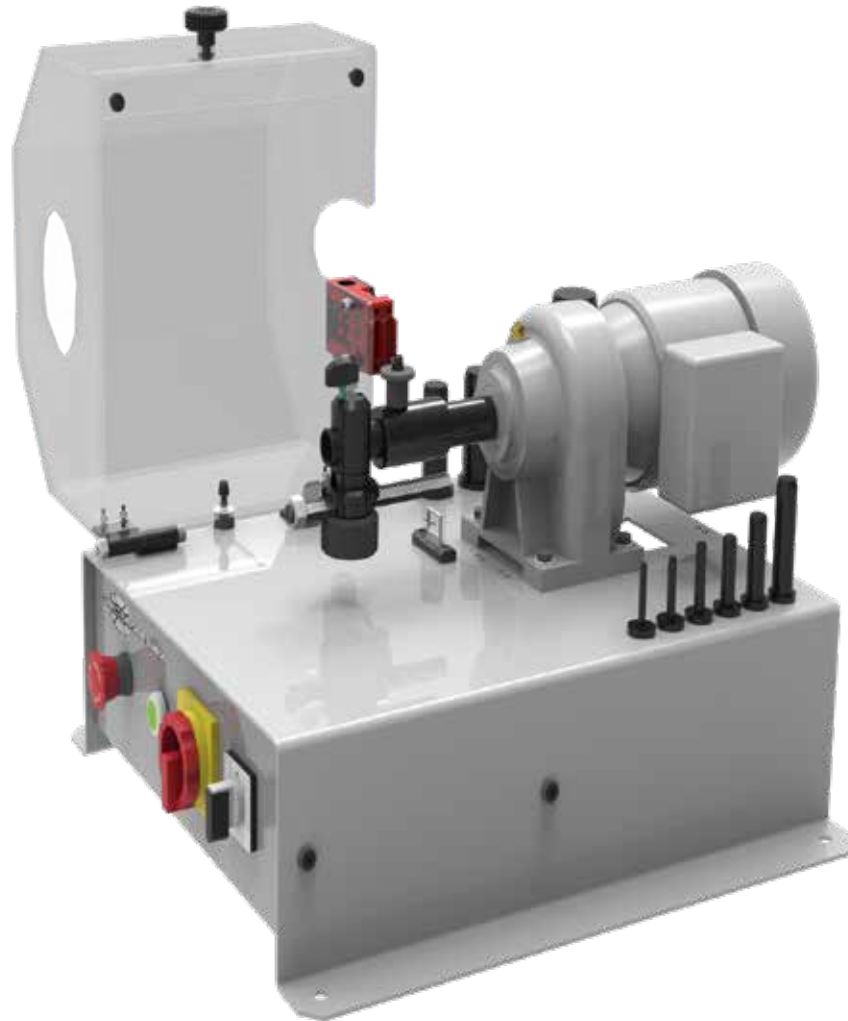
MOTOR BRAKE

The motor brake is a device which stops the disc immediately when the stop button is pushed.

PNEUMATIC BENDING

Available on M 55 CUT and M 75 CUT.

Pneumatic bending facilitates cutting, as the operator does not have to force the hose on the blade. The pneumatic system, activated by a foot switch, offers hands-free operation. This is the same principle for the hydraulic bending on M 90 CUT.

INTRODUCTION

From manual hand-skiving tools for low volume maintenance, to high volume production machines, our skiving equipment provides a clean, safe hose skive, whatever your hose type (for both internal and external skive).

MH SKY

FIELD SERVICE & MOBILE WORKSHOP
MANUAL, PORTABLE SKIVING TOOL

KEY FEATURES

- Portable, lightweight
- Economic
- Simple
- Compact
- Robust
- Plug'n skive system



TECHNICAL SPECIFICATIONS

CAPACITY

2wb: 2" max.

4ws: 2" max.

DIMENSIONS

413 x 52 x 224 mm
(16 x 2 x 9")

NET WEIGHT

3 kg (7 lb)

TECHNICAL FEATURES

Tool selection:

- External Skiving Kit (ESE) including 10 mandrels
(6-8-10-13-16-19-25-32-38-50)

- Internal Skiving Kit (IS) including 7 mandrels (13-16-19-25-32-38-50)

Internal skiving tools can also be ordered per diameter.

OPTIONAL



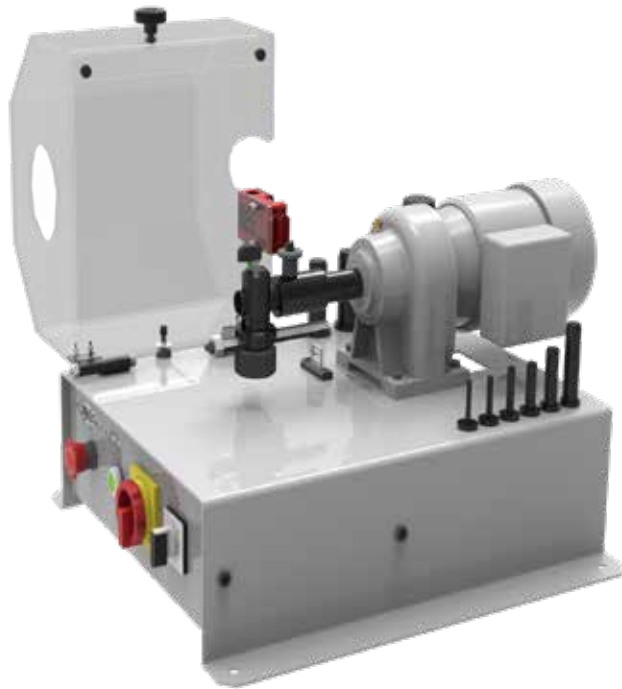
Tool Kit ESE



Tool Kit IS

M 50 SKY +

SMALL SERVICE WORKSHOP
BENCHTOP SKIVING



KEY FEATURES

- Plug'n skive system
- Compact & stable
- Safety switch on the cover
- Good visibility
- Tool storage included
- Foot pedal drive with emergency stop
- 2-way rotation

STANDARD



CME Electrical Footswitch

TECHNICAL SPECIFICATIONS

CAPACITY

2wb: 2" max.

4ws: 2" max.

PACKAGING

800 x 600 x 700 mm

(31 x 24 x 28")

ROTATION SPEED

100 rpm

NET WEIGHT

45 kg (99 lb)

MOTOR

0.25 kW

GROSS WEIGHT

55 kg (121 lb)

VOLTAGES

220/240 V, 1Ph, 50 Hz

380/415 V, 3Ph, 50 Hz

220/240 V, 1Ph, 60 Hz

380/415 V, 3Ph, 60 Hz

TECHNICAL FEATURES

Tools available (to be ordered separately)

ESE, IS, ESP1, ESP2

DIMENSIONS

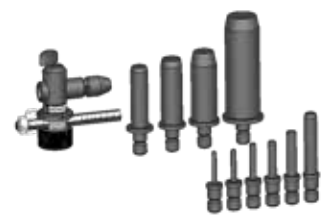
500 x 660 x 360 mm

(19 x 26 x 14")

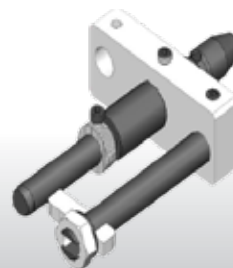
OPTIONAL



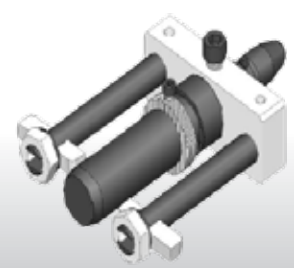
Tool Kit IS



Tool Kit ESE



Tool Kit ESP 1



Tool Kit ESP 2

M 300 SKY

STARTER & PROFESSIONAL WORKSHOP
STAND TYPE SKIVING MACHINE

KEY FEATURES

- Plug'n skive system
- Large dust collector
- Robust & easily adjustable knife for quick and easy changeover
- Suitable for high volume production
- 2-way rotation
- Speed regulator for single-phase version



SKIVING MACHINES 22

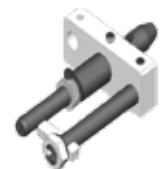
CAPACITY	PACKAGING
2wb: 2" max.	800 x 600 x 1200 mm
4ws: 2" max.	(32 x 24 x 47")
6ws: 3" max. *	NET WEIGHT
ROTATION SPEED	100 kg (220 lb)
300 rpm	GROSS WEIGHT
MOTOR	160 kg (353 lb)
0.9 kW	TECHNICAL FEATURES
VOLTAGES	Options available: hose clamping system (recommended for hoses from 2")
220/240 V, 3Ph, 50 Hz	
380/415 V, 3Ph, 50 Hz	
208/240 V, 3Ph, 60 Hz	
380/415 V, 3Ph, 60 Hz	
DIMENSIONS	Tools available (to be ordered separately): ESA, IS, ESP1, ESP2
675 x 550 x 1130 mm	
(27 x 22 x 44")	
*with clamping system	



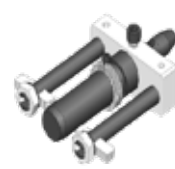
Tool Kit IS



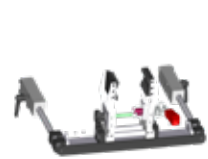
Tool Kit ESA



Tool Kit ESP 1



Tool Kit ESP 2



Manual Hose Clamping System



Pneumatic Hose Clamping System



Speed Regulator

ACCESSORIES AND TOOLS

EXTERNAL SKIVING TOOLS

Depending on the machine and on customer needs, Manuli offers three types of external skiving tools:

1. ESE (EXTERNAL SKIVING ECONOMIC)

For MH SKY, M 50 SKY + & M 30 CUT & SKIVE

The ESE kit includes 10 mandrels: 1/4", 5/16", 3/8", 1/2", 5/8", 3/4", 1", 1 1/4", 1 1/2", 2"

2. ESA (EXTERNAL SKIVING ADJUSTABLE)

For M 300 SKY

The ESA kit includes 11 mandrels: 3/16", 1/4", 5/16", 3/8", 1/2", 5/8", 3/4", 1", 1 1/4", 1 1/2", 2"

ESA mandrels are also available in 2 1/2" and 3"

3. ESP (EXTERNAL SKIVING PRODUCTION)

For M 50 SKY + and M 300 SKY

ESP tools are individual 'skiving heads' intended to be pre-set to the right depth and length for greater productivity. They are recommended for batch skiving operations and a second knife can be added for abrasion resistant covers.

ESP is available in: 3/16", 1/4", 5/16", 3/8", 1/2", 5/8", 3/4", 1", 1 1/4", 1 1/2", 2", 2 1/2"

INTERNAL SKIVING TOOLS

IS (INTERNAL SKIVING)

For all machines

The IS kit includes 7 mandrels: 1/2", 5/8", 3/4", 1", 1 1/4", 1 1/2", 2"

They are also available in 5/8", 2 1/2" and 3"

The ring is heat treated to resist the abrasion of the hose wires.

Optional venturi system with IS tool.

ACCESSORIES AND TOOLS

HOSE CLAMPING SYSTEM

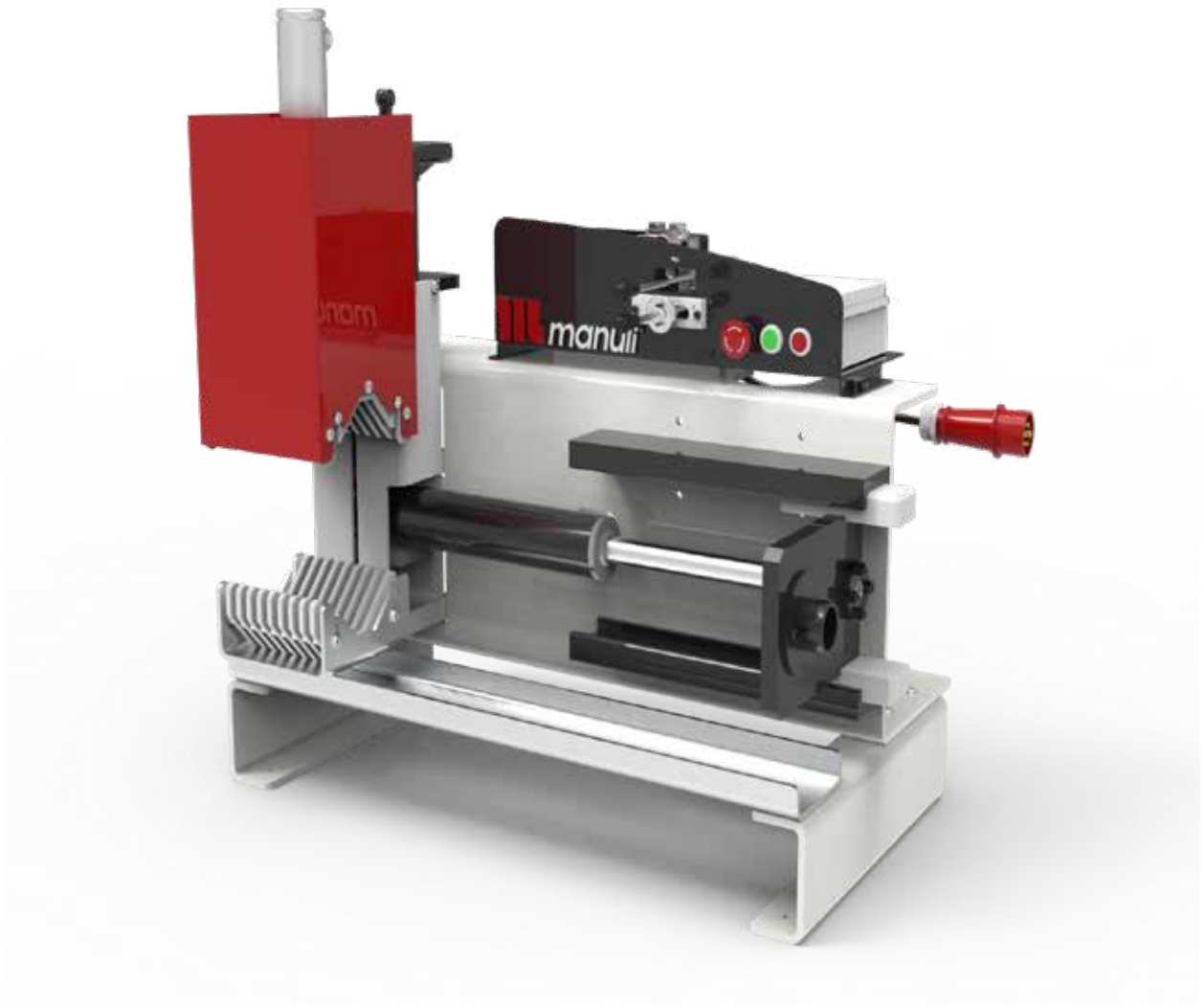
Recommended for skiving hoses over 2" (DN 50)

PLUG'N SKIVE SYSTEM

All Manuli Hydraulics skiving machines are equipped with the Plug'n Skive System which allows the quick and easy insertion of tools.

With the Plug'n Skive System no tools are needed to insert the skiving mandrel. Simply push the mandrel into the locking system to unlock it, lift the knob and pull out the tool.

INTRODUCTION



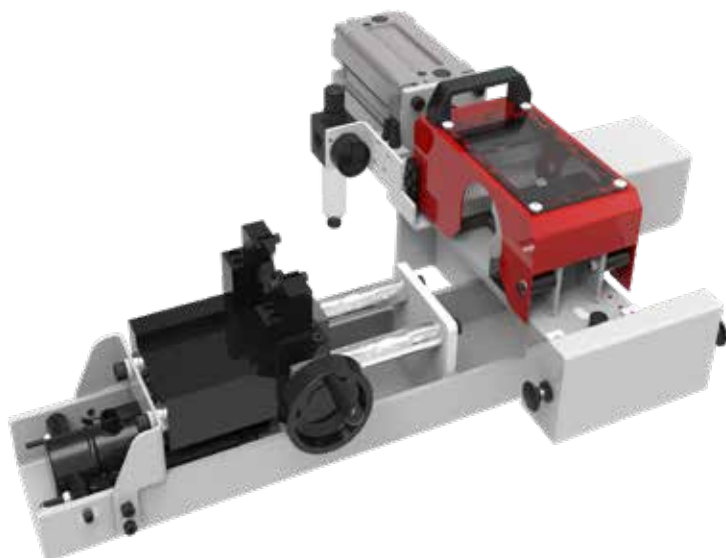
Our insert pushing equipment takes the effort and uncertainty out of building hose assemblies by making sure that fittings are fully inserted prior to crimping.

M 1500 INS

EXPERT SERVICE LINE
BENCHTOP COUPLING INSERTER

KEY FEATURES

- Compact
- Sturdy
- Powerful



STANDARD



Hydro-Pneumatic Pump

TECHNICAL SPECIFICATIONS

CAPACITY

2wb: 2" max.

4ws: 2" max.

6ws: 2" max.

DIMENSIONS

750 x 660 x 300 mm

(30 x 26 x 12")

NET WEIGHT

70 kg (154 lb)

power supply

Compressed air (7 bar)

TECHNICAL FEATURES

Optional tool: for small bore ¼", ", ½" shell

M 2000 INS

EXPERT SERVICE LINE
BENCHTOP COUPLING INSERTER



KEY FEATURES

- Compact
- Sturdy
- Powerful hydraulic cylinder
- Insert centring device
- Joystick operated clamping and insertion



Hydraulic Manual Version

TECHNICAL SPECIFICATIONS

CAPACITY	DIMENSIONS
6ws: 3/4" - 2" with special tool	800 x 500 x 900 mm
6ws: 2" - 4"	(31 x 20 x 35")
Industrial: 6"	
INSERTION SPEED*	VOLTAGES
28 mm/s	380/415, 3 Ph, 50 Hz
INSERTION STROKE	MAXIMUM FLANGE
300 mm	250 mm
INSERTION FORCE	CLAMPING LENGTH
2 000 daN	200 mm
POWER*	NET WEIGHT
1.5 kW	150 kg (330 lb)

* with the electrical version

INTRODUCTION



Ensure full traceability with our ferrule marking equipment, complete with a full set of alpha-numeric and additional character punches.

M 50 MARK

AFTER MARKET SERVICE
BENCHTOP, FERRULE MARKING



KEY FEATURES

- Robust
- Easy to use
- Compact
- Large space for 14 stamps
- Stamp holder with numbering wheel; 3 figures on the wheel + 1 groove for stamps

TECHNICAL SPECIFICATIONS

CAPACITY	size of the stamps
2wb: 4" max.	6 x 3 mm
4ws: 4" max.	(0.236 x 0.118")
DIMENSIONS	height of the letters
390 x 360 x 520 mm	2.5 mm
(15 x 14 x 20")	(0.098")
Packaging	technical features
800 x 600 x 830 mm	Optional stamp holder with numbering wheel: 3 figures on the wheel and one groove for 10 stamps
(31 x 24 x 33")	
NET WEIGHT	stamp box
34 kg (75 lb)	Includes stamp box of 100 stamps & 20 blanks
gross WEIGHT	
50 kg (110 lb)	
standard stamp holder	
2 x 14 stamps	

INTRODUCTION



Our crimping machines come in a variety of sizes and capacities, making them ideal for everything from one-off, small bore maintenance jobs to full scale assembly production operations.

CRIMPING MACHINES EVO RANGE

Manuli Hydraulics is always on the lookout for ways to improve both the efficiency and the quality of new and existing production operations.

As a market leader in assembly machines, we wanted to offer new crimping machines to improve the operator's comfort, giving more flexibility when assembling hoses. This led to the creation of the new EVO crimping machines.

These machines combine the robustness required for harsh environments with the reliability needed for busy workshops. Their compact and ergonomic design, along with the ease of set up and maintenance, make them suitable for a variety of applications.

This extensive range is highly adaptable, with various options available allowing users to customise their machine according to their specific needs.



- Extensive range for both industrial and hydraulic hoses.
- 137, 240, 350 and 420 tonnes variants
- From 3/16 up to 4" hose diameter
- 3 kW, 4 kW and 5,5 kW motor for 1 Ph/3Ph



- SC panel - Smart Control panel. Daily counter. Semi-automatic opening.
- SCE panel - electronic micrometer with the ability to save up to 75 configurations
- Caliper connected and numerical display of the crimping range on SCE and SCS
- SCS panel - Safe Crimp System



- Compact and ergonomic design
- Easy set up
- Various options available depending on our customers' needs and workshops



- Robust
- Ease of maintenance (foam pads and dust collector)
- Compatibility with all tensions (different frequencies)

MHP 80 EVO

FIELD SERVICE & MOBILE WORKSHOP
HAND PUMP, PORTABLE

KEY FEATURES

- Compact
- Lightweight
- Easy to use
- Balanced design
- Dual stage pump



TECHNICAL SPECIFICATIONS

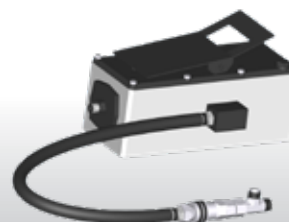
CAPACITY*	DIMENSIONS
2wb: 1" max.	360 x 270 x 390 mm
4ws: ½" max.	(14 x 11 x 15")
CRIMP RANGE	PACKAGING
6 - 43 mm (0.236 - 1.693")	800 x 600 x 830 mm
CRIMP FORCE	(31 x 24 x 33")
80 t	NET WEIGHT
OPENING WITH DIES	26 kg (57 lb)
+20 mm (+0.787")	GROSS WEIGHT
COMPLETE OPENING	39 kg (86 lb)
59 mm (2.323")	TECHNICAL FEATURES
MASTER DIE LENGTH	Hand pump: 5000 psi (double speed)
56 mm (2.205")	
STANDARD DIES	
16, 18, 20, 22, 24, 27, 30**	

*Indicative capacities depending on hose and fitting type
** Master-dies used as dies set N°39

OPTIONAL



Maintenance Kits



Hydro-Pneumatic Pump

MHP 110 EVO

FIELD SERVICE & MOBILE WORKSHOP
HAND PUMP, PORTABLE



KEY FEATURES

- Flexible
- Portable
- Robust (protected narrow head)
- Multi-positioning (with removable plate)

OTHER VERSIONS AVAILABLE



Head Only Version



Magnet Version

TECHNICAL SPECIFICATIONS

CAPACITY*

2wb: 1" max.

4ws: 1" max.

CRIMP RANGE

6 - 43 mm (0.236 - 1.693")

CRIMP FORCE

110 t

OPENING WITH DIES

+20 mm (+0.787")

COMPLETE OPENING

59 mm (2.323")

MASTER DIE LENGTH

60 mm (2.362")

STANDARD DIES

16, 18, 20, 22, 24, 27, 30, 39**

DIMENSIONS

289 x 237 x 270 mm

(11 x 9 x 10")

PACKAGING

800 x 600 x 830 mm

(31 x 24 x 33")

NET WEIGHT

29 kg (63 lb)

Magnet version: 30kg (66 lb)

WEIGHT (HEAD ONLY)

21 kg (46 lbs)

* Indicative capacities depending on hose and fitting type

** Master-dies used as dies set N°39

OPTIONAL



Maintenance Kits



Hydro-Pneumatic Pump

MHP 137

FIELD SERVICE & MOBILE WORKSHOP
HAND PUMP, PORTABLE



KEY FEATURES

- High capacity
- Narrow head
- Audio-visual signal
- 350 bar technology robust & reliable
- Large opening

TECHNICAL SPECIFICATIONS

CAPACITY*

2wb / 4ws: 1”¼ max.
Industrial: 1”½ max.

CRIMP RANGE

4 - 70 mm (0.157 - 2.756”)

CRIMP FORCE

137 t

OPENING WITH DIES

+28 mm (+1.102”)

COMPLETE OPENING

108 mm (4.252”)

MASTER DIE LENGTH

75 mm (2.962”)

STANDARD DIES

14, 16, 18, 20, 22, 24, 27, 30, 33, 36,
39, 42, 45, 48, 51 and Refrifast dies 14,
18, 21

DIMENSIONS

480 x 250 x 340 mm
(19 x 10 x 13”)

PACKAGING

800 x 600 x 830 mm
(31 x 24 x 33”)

NET WEIGHT

55 kg (121 lb)

GROSS WEIGHT

75 kg (165 lb)

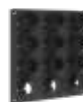
OPTIONAL



Maintenance Kit



Aluminium Quick Change Gun



Die Storage Panel



Hydro-pneumatic Pump



Marking Dies



Die Sets for Brake & Air Conditioning Hoses

*Indicative capacities depending on hose and fitting type

MRB 70 EVO R

MAINTENANCE WORKSHOP
VERTICAL BENCHTOP



KEY FEATURES

- Ergonomically positioned adjustable head
- Axis of the head situated perpendicular to the operator
- Compact

TECHNICAL SPECIFICATIONS

CAPACITY*

2wb: 1" max.
4ws: 3/4" max.

CRIMP RANGE

6 - 43 mm (0.236 - 1.692")

CRIMP FORCE

70 t

OPENING WITH DIES

+20 mm (+0.787")

COMPLETE OPENING

59 mm (2.323")

MASTER DIE LENGTH

60 mm (2.362")

STANDARD DIES

06, 08, 10, 12, 15, 18, 21, 24, 27, 30.

NOISE LEVEL

<70 db A

*Indicative capacities depending on hose and fitting type

MOTOR

2.2 kW

VOLTAGES

220/240 V, 1Ph, 50 Hz
e380/415V, 3Ph + N, 50Hz

Others voltages available on request

DIMENSIONS

360 x 530 x 620 mm
(14 x 21 x 25")

NET WEIGHT

58 kg (128 lb)

GROSS WEIGHT

71 kg (156 lb)

OPTIONAL



MRB 137 EVO R

MAINTENANCE WORKSHOP
VERTICAL BENCHTOP

KEY FEATURES

- Ergonomically positioned adjustable head
- Axis of the head situated perpendicular to the operator
- Compact



TECHNICAL SPECIFICATIONS

CAPACITY*	MOTOR
2wb / 4ws: 1"¼ max.	1.5 kW (110V)
Industrial: 1"½ max.	2.2 kW (230V)
CRIMP RANGE	VOLTAGES
4-70 mm (0.157 - 2.756")	110 V, 1Ph, 60 Hz
CRIMP FORCE	220/240 V, 1 Ph, 50 Hz
137 t	380/415V, 3 Ph + N, 50 Hz
OPENING WITH DIES	+12/24V
+28 mm (+1.102")	Other voltages available on request
COMPLETE OPENING	DIMENSIONS
108 mm (4.252")	360 x 530 x 620 mm
MASTER DIE LENGTH	(14 x 21 x 25")
75 mm (2.953")	NET WEIGHT
STANDARD DIES	85 kg (187 lb)
14, 16, 18, 20, 22, 24, 27, 30, 33, 36, 39, 42, 45, 48, 51	GROSS WEIGHT
NOISE LEVEL	89 kg (196 lb)
<70 dB A	

*Indicative capacities depending on hose and fitting type.

OPTIONAL



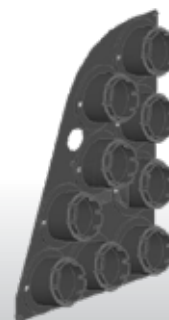
Maintenance Kits



Die Storage Panel



Aluminium Quick Change Gun



Die Storage Panel EVO R

MB 137 EVO

ASSEMBLING FOR FIELD REPAIR
BENCHTOP CRIMP MACHINE



KEY FEATURES

- Crimp force of up to 137 tonnes for hoses up to 1 1/4"
- Easy to use and robust
- Extensive range of dies to suit crimping of hydraulic hoses
- Easy set up and maintenance
- Fast and reliable
- Digital micrometer
- Model shown equipped with SC control panel

CONTROL OPTIONS AVAILABLE ON REQUEST



SC



SCE



SCS

TECHNICAL SPECIFICATIONS

CAPACITY*

2wb / 4ws: 1 1/4 max.

Industrial: 1 1/2 max.

CRIMP RANGE

4 - 70 mm (0.157 - 2.756")

CRIMP FORCE

137 t

OPENING WITH DIES

+28 mm (+1.102")

COMPLETE OPENING

108 mm (4.252")

MASTER DIE LENGTH

75 mm (2.953")

STANDARD DIES

14, 16, 18, 20, 22, 24, 27, 30, 33, 36, 39, 42, 45, 48, 51

NOISE LEVEL

<70 dB A

MOTOR

4.0 kW

VOLTAGES

220/240 V, 1Ph, 50/60 Hz

220/240 V, 3Ph, 50 Hz

380/415 V, 3Ph, 50 Hz

208/240 V, 3Ph, 60 Hz

Other voltages available on request

DIMENSIONS

765 x 400 x 650 mm

(30 x 16 x 26")

NET WEIGHT

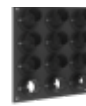
160 kg (353 lb)

*Indicative capacities depending on hose and fitting type.

OPTIONAL



Maintenance Kit



Die Storage Panel



Die Storage Table



Die Storage Table EVO



Electrical Footswitch



Aluminium Quick Change Gun



Digital Caliper



Die Sets for Brake & Air Conditioning Hoses



Marking Dies



Die Storage Panel EVO

MB 240 EVO

KEY FEATURES

- Crimp force of up to 240 tonnes for hoses up to 2"
- Easy to use and robust
- Radial die movement
- High crimping force
- Extensive range of dies to suit crimping of hydraulic hoses
- Easy set up and maintenance
- Fast and reliable
- Model shown equipped with SCE control panel



CONTROL OPTIONS AVAILABLE ON REQUEST



SC



SCE



SCS

TECHNICAL SPECIFICATIONS

CAPACITY*

2wb: 2" max.
4ws: 2" max.
6ws: 1 1/2" max.

CRIMP RANGE

4 - 76 mm (0.157 - 2.992")

CRIMP FORCE

240 t

OPENING WITH DIES

+38 mm (+1.496")

COMPLETE OPENING

118 mm (4.645")

MASTER DIE LENGTH

100 mm (3.937")

STANDARD DIES

14, 16, 18, 20, 22, 24, 27, 30, 33, 36, 39, 42, 45, 48, 51, 57, 63, 66, 70

NOISE LEVEL

<70 dB A

MOTOR

4.0 kW

VOLTAGES

220/240 V, 1Ph, 50/60 Hz

220/240 V, 3Ph, 50 Hz

380/415 V, 3Ph, 50 Hz

208/240 V, 3Ph, 60 Hz

Other voltages available on request

DIMENSIONS

765 x 400 x 650 mm
(30 x 16 x 26")

NET WEIGHT

165 kg (364 lb)

*Indicative capacities depending on hose and fitting type.

OPTIONAL



Maintenance Kit



Electrical Footswitch



Die Storage Panel



Die Storage Table



Die Storage Table EVO



Digital Caliper



Aluminium Quick Change Gun



Mechanical Backstop



Die Sets for Brake & Air Conditioning Hoses



Marking Dies



Die Storage Panel EVO

MB 350 EVO - L

FULL SERVICE WORKSHOP
BENCHTOP; VERY HIGH CRIMP FORCE



KEY FEATURES

- Crimp force up to 350 tonnes for hoses up to 3”
- Easy to use and robust
- Automatic maintenance alerts
- Groove for 90° long drop fittings
- Also available as S CRIMP 350 L with 4.0 kW motor
- Model shown equipped with SCS control panel

CONTROL OPTIONS AVAILABLE ON REQUEST



SC



SCE



SCS

TECHNICAL SPECIFICATIONS

CAPACITY*

2wb: 3” max.
Industrial: 4” max.
4ws: 2” max.
6ws: 2” max.

CRIMP RANGE

4 - 130 mm (0.157 - 5.118”)

CRIMP FORCE

350 t

OPENING WITH DIES

+54 mm (+2.125”)

COMPLETE OPENING

180 mm (7.086”)

MASTER DIE LENGTH

115 mm (4.523”)

STANDARD DIES

14, 16, 18, 20, 22, 24, 27, 30, 33, 36, 39, 42, 45, 48, 51, 57, 63, 66, 70, 73, 76

NOISE LEVEL

<70 dB A

MOTOR

5.5 kW / 4 kW

VOLTAGES

220/240 V, 3Ph, 50 Hz
380/415 V, 3Ph, 50 Hz
208/240 V, 3Ph, 60 Hz
380/415 V, 3Ph, 60 Hz

DIMENSIONS

765 x 400 x 750 mm
(30 x 16 x 30”)

NET WEIGHT

262 kg (578 lb)

TECHNICAL FEATURES

-Automatic maintenance alerts
-Cylinder protection against dust - durable design
-Also available as S CRIMP 350 EVO L with 4.0 kW Motor

*Indicative capacities depending on hose and fitting type.

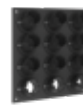
OPTIONAL



Maintenance Kit



Electrical Footswitch



Die Storage Panel



Die Storage Table



Die Storage Table EVO



Digital Caliper



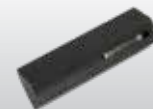
Aluminium Quick Change Gun



Mechanical Backstop



Die Sets for Brake & Air Conditioning Hoses



Marking Dies



Die Storage Panel EVO

GOLDENCRIMP 420 EVO

ASSEMBLING FOR FIELD REPAIR
BENCHTOP CRIMPING MACHINE



KEY FEATURES

- High crimping force of 420 tonnes
- Robust design for transport and operation in harsh environments
- Protected cylinders for trouble-free operation in high dust environments
- Large opening suitable for large bore hoses
- Easy maintenance due to dust collector foam pads
- Model shown equipped with SC control panel

CONTROL OPTIONS AVAILABLE ON REQUEST



SC



SCE



SCS

TECHNICAL SPECIFICATIONS

CAPACITY*

6ws: 3" max.

Industrial: 4" max.

CRIMP RANGE

4 - 130 mm (0.157 - 5.118")

CRIMP FORCE

420 t

OPENING WITH DIES

+48 mm (+1.9 inch)

COMPLETE OPENING

178 mm (7.0 inch)

MASTER DIE LENGTH

120 mm (4.724 inch)

STANDARD DIES

14, 16, 18, 20, 22, 24, 27, 30, 33, 36, 39, 42, 45, 48, 51, 57, 63, 66, 70, 73, 76

NOISE LEVEL

<70 dB A

MOTOR

5.5 kW

VOLTAGES

220/240 V, 3Ph, 50 Hz

380/415 V, 3Ph, 50 Hz

208/240 V, 3Ph, 60 Hz

380/415 V, 3Ph, 60 Hz

DIMENSIONS

765 x 500 x 800 mm

(30 x 20 x 32")

PACKAGING

745 x 1150 x 945 mm
(29 x 45 x 37")

NET WEIGHT

395 kg (871 lb)

*Indicative capacities depending on hose and fitting type.

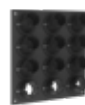
OPTIONAL



Maintenance Kit



Electrical Footswitch



Die Storage Panel



Die Storage Table



Die Storage Table EVO



Digital caliper



Aluminium Quick Change Gun



Mechanical Backstop



Die Sets for Brake & Air Conditioning Hoses



Marking Dies



Die Storage Panel EVO

GOLDENCRIMP 450

ASSEMBLING FOR FIELD REPAIR
BENCHTOP CRIMP MACHINE



KEY FEATURES

- High crimp force
- Large opening
- Wide family of dies for industrial hoses
- Long master dies
- Robust - designed for harsh environments
- Low noise level
- Easy die set-up with ergonomic gun
- Metallic guard for the set stop

STANDARD



Electrical Footswitch



Aluminium Quick Change Gun

TECHNICAL SPECIFICATIONS

CAPACITY*	NOISE LEVEL
6ws: 3" max.	<65 dB A
Industrial: 6" max.	MOTOR
CRIMP RANGE	5.5 kW
4 - 180 mm (0.157 - 7.087")	VOLTAGES
CRIMP FORCE	220/240 V, 3Ph, 50 Hz
450 t	380/415 V, 3Ph, 50 Hz
OPENING WITH DIES	208/240 V, 3Ph, 60 Hz
+70 mm (+2.755")	380/415 V, 3Ph, 60 Hz
COMPLETE OPENING	DIMENSIONS
230 mm (9.055")	830 x 775 x 1450 mm
MASTER DIE LENGTH	(33 x 31 x 57")
125 mm (4.921")	PACKAGING
STANDARD DIES	1120 x 1020 x 1770 mm
16, 18, 20, 22, 24, 27, 30, 33, 36, 39, 42, 45, 48, 51, 57, 63, 66, 70, 73, 76	(44 x 40 x 70")
	NET WEIGHT
	720 kg (1587 lb)

*Indicative capacities depending on hose and fitting type.

OPTIONAL



Marking Dies



Die Sets for Brake & Air Conditioning Hoses

MRV 137 EVO R

FIELD SERVICE & MOBILE WORKSHOP
MOBILE VAN

KEY FEATURES

- Swivel head for an ergonomic position
- Head axis perpendicular to the operator
- Compact and lightweight



TECHNICAL SPECIFICATIONS

CAPACITY*	MOTOR
2wb / 4ws: 1 ¼" max.	2.0 kW
Industrial: 1 1/2" max.	VOLTAGES
CRIMP RANGE	12 V
4 - 70 mm (0.157 - 2.756")	24 V
CRIMP FORCE	DIMENSIONS
137 t	392 x 398 x 486 mm (15 x 16 x 19")
OPENING WITH DIES	PACKAGING
+28 mm (+1.102")	800 x 600 x 830 mm (31 x 24 x 33")
COMPLETE OPENING	NET WEIGHT
108 mm (4.252")	73 kg (161 lb)
MASTER DIE LENGTH	GROSS WEIGHT
75 mm (2.952")	90 kg (199 lb)
STANDARD DIES	NOISE LEVEL
14, 16, 18, 20, 22, 24, 27, 30, 33, 36, 39, 42, 45, 48, 51	<72 dB A
*Indicative capacities depending on hose and fitting type.	

OPTIONAL



MV 137 / 137 L

FIELD SERVICE & MOBILE WORKSHOP
MOBILE VAN



KEY FEATURES

- Robust and compact design
- Lightweight
- High crimping speed
- Suitable also for 90° elbow fittings
- Cylinder protection
- Remote head mounting option possible



TECHNICAL SPECIFICATIONS

CAPACITY*

2wb / 4ws: 1"¼ max.
Industrial: 1"½ max.

CRIMP RANGE

4 - 70 mm (0.157 - 2.756")

CRIMP FORCE

137 t

OPENING WITH DIES

+28 mm (+1.102")

COMPLETE OPENING

108 mm (4.252")

MASTER DIE LENGTH

75 mm (2.952")

STANDARD DIES

14, 16, 18, 20, 22, 24, 27, 30, 33, 36, 39, 42, 45, 48, 51

NOISE LEVEL

72 dB A

MOTOR

2.0 kW

VOLTAGES

12/24 V

DIMENSIONS

650 x 550 x 610 mm
250 x 320 x 300 mm**

PACKAGING

800 x 600 x 830 mm

NET WEIGHT

103 kg / 86 kg**

GROSS WEIGHT

120 kg / 102 kg**

DIMENSIONS OF POWER PACK

440 x 320 x 320 mm**

*Indicative capacities depending on hose and fitting type.

** L Version

OPTIONAL



Maintenance Kit



Battery



Aluminium Quick Change Gun



Die Storage Panel



Marking Dies



Die Sets for Brake & Air Conditioning Hoses

MV 240 / 240 L

FIELD SERVICE & MOBILE WORKSHOP
MOBILE VAN



KEY FEATURES

- Robust design
- Ergonomic micrometer
- High crimping speed
- Radial movement of the dies
- Cylinder protection
- Remote head mounting option possible



TECHNICAL SPECIFICATIONS

CAPACITY*	MOTOR
2wb: 2" max.	2.0 kW
4ws: 2" max.	VOLTAGES
6ws: 1" 1/4 max.	12 / 24 V
CRIMP RANGE	220/240 V, 3Ph, 50 Hz
4 - 76 mm (0.157 - 2.992")	380/415 V, 3Ph, 50 Hz
CRIMP FORCE	208/240 V, 3Ph, 60 Hz
240 t	DIMENSIONS
OPENING WITH DIES	650 x 550 x 670 mm
+38 mm (+1.496")	320 x 360 x 350 mm**
COMPLETE OPENING	PACKAGING
118 mm (4.646")	800 x 600 x 830 mm
MASTER DIE LENGTH	NET WEIGHT
100 mm (3.937")	118 kg / 130 kg**
STANDARD DIES	GROSS WEIGHT
14, 16, 18, 20, 22, 24, 27, 30, 33, 36, 39, 42, 45, 48, 51, 57, 63, 66, 70	180 kg / 180 kg**
NOISE LEVEL	DIMENSIONS OF POWER PACK
72 dB A	440 x 320 x 320 mm**

*Indicative capacities depending on hose and fitting type.
** L Version

OPTIONAL



Maintenance Kit



Battery



Aluminium Quick Change Gun



Die Storage Panel



Marking Dies



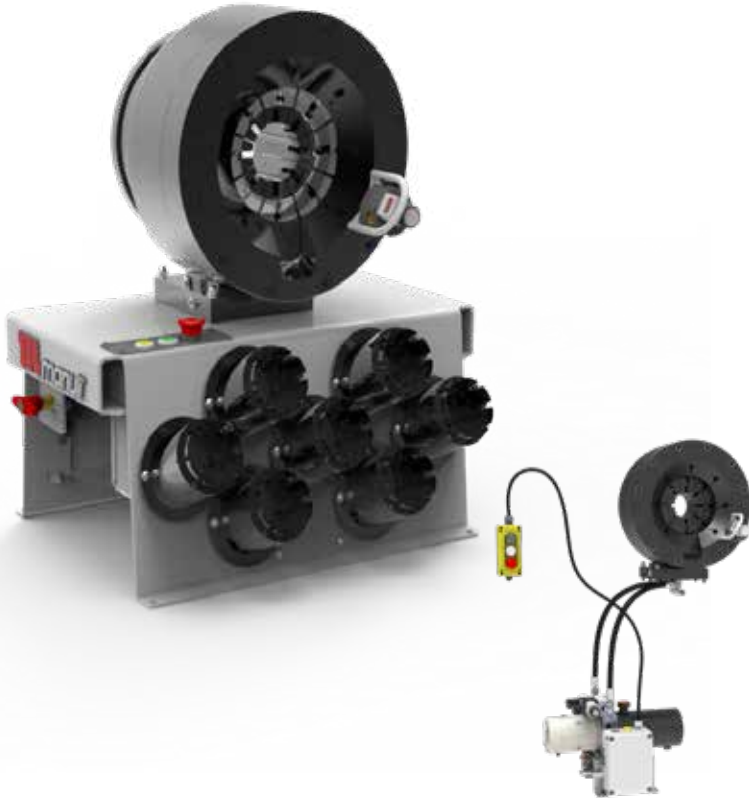
Die Sets for Brake & Air Conditioning Hoses



Front Die Storage

MV 350 / 350 L

FIELD SERVICE & MOBILE / CONTAINER WORKSHOP MOBILE VAN



KEY FEATURES

- Robust design
- Large opening
- High crimping force
- Ergonomic micrometer
- High crimping speed
- Radial movement of the dies
- Cylinder protection
- Remote head mounting option possible

TECHNICAL SPECIFICATIONS

CAPACITY*	MOTOR
2wb: 3" max.	2.0 kW
4ws: 2" max.	VOLTAGES
6ws: 2" max.	12 V
Industrial: 4"	24 V
CRIMP RANGE	220/240 V, 3Ph, 50 Hz
4 - 130 mm (0.157 - 5.118")	380/415 V, 3Ph, 50 Hz
CRIMP FORCE	208/240 V, 3Ph, 60 Hz
350 t	380/415 V, 3Ph, 60 Hz
OPENING WITH DIES	DIMENSIONS
+54 mm (+2.125")	650 x 550 x 750 mm
COMPLETE OPENING	485 x 435 x 390 mm**
180 mm (7.086")	PACKAGING
MASTER DIE LENGTH	800 x 600 x 830 mm
115 mm (4.528")	NET WEIGHT
STANDARD DIES	210 kg / 215 kg**
14, 16, 18, 20, 22, 24, 27, 30, 33, 36, 39, 42, 45, 48, 51, 57, 63, 66, 70, 73, 76	GROSS WEIGHT
NOISE LEVEL	260kg / 230 kg**
<65 dB A	DIMENSIONS OF POWER PACK
	605 x 318 x 325 mm

* Indicative capacities depending on hose and fitting type.
 ** L Version

OPTIONAL

GREEN **YELLOW** **RED**

Maintenance Kit

Battery

Aluminium Quick Change Gun

Die Storage Panel

Marking Dies

Die Sets for Brake & Air Conditioning Hoses

Front Die Storage

N CRIMP 70 / 80

PEP 108/158
EXPERT SERVICE LINE



KEY FEATURES

- Easy to use
- Accurate
- Robust die holder system
- Semi automatic opening
- High speed
- Large opening and capacity
- Available with SCE control panel

CONTROL OPTIONS AVAILABLE ON REQUEST



TECHNICAL SPECIFICATIONS

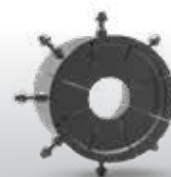
	N CRIMP 70	N CRIMP 80
CAPACITY*	1-1/2"	3"
CRIMP RANGE	4 - 60 mm (0.157 - 2.362")	4 - 110 mm (0.157 - 4.331")
CRIMP FORCE	70 t	80 t
COMPLETE OPENING	108 mm (4.252")	156 mm (6.142")
OPENING WITH DIES	+28 mm (+1.102 ")	+38 mm (1.496")
MASTER DIE LENGTH	100 mm (3.937")	125 mm (4.921")
MOTOR	4 kw	
VOLTAGES	230V, 3Ph 400V, 3 Ph	
MACHINE DIMENSIONS	1120 x 560 x 940 mm (44 x 22 x 37")	
PACKAGING	1200 x 850 x 1500 mm (47 x 33 x 59 ")	
NET WEIGHT	380 kg	450 kg

*Indicative capacities depending on hose and fitting type

OPTIONAL



Automatic
Central Greasing
Pump



Pre-crimping
Die Sets

MS 140

ASSEMBLING FOR MASS PRODUCTION
STAND TYPE CRIMP MACHINE



KEY FEATURES

- Safe Crimp System (SCS) control
- Large production capacity (small/medium bore)
- Low noise level
- Precise
- Robust
- Available with SCE control panel

STANDARD



Aluminium Quick Change Gun



SCS Safe Crimp System



Mirror



Electrical Footswitch



Die Storage

TECHNICAL SPECIFICATIONS

CAPACITY*

2wb: 2" max.

4ws: 1" 1/4 max.

Industrial: 2" 1/2 max.

CRIMP RANGE

4 - 70 mm (0.157 - 2.756")

CRIMP FORCE

140 t

OPENING WITH DIES

+45 mm (+1.772")

COMPLETE OPENING

125 mm (4.921")

MASTER DIE LENGTH

80 mm (3.150")

STANDARD DIES

14, 16, 18, 20, 22, 24, 27, 30, 33, 36, 39, 42, 45, 48

NOISE LEVEL

<65 dB A

MOTOR

4 kW

VOLTAGES

220/240 V, 3Ph, 50 Hz

380/415 V, 3Ph, 50 Hz

208/240 V, 3Ph, 60 Hz

DIMENSIONS

890 x 690 x 1380 mm

(35 x 27 x 54")

PACKAGING

1120 x 1020 x 1725 mm

(44 x 40 x 68")

NET WEIGHT

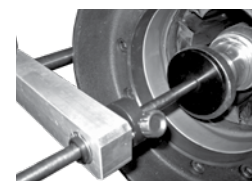
600 kg (1323 lb)

*Indicative capacities depending on hose and fitting type.

OPTIONAL



Barcode Reader



Mechanical Backstop



Digital Caliper

MS 320

ASSEMBLING FOR MASS PRODUCTION
STAND TYPE CRIMP MACHINE



KEY FEATURES

- High crimp force
- Large opening
- Safe Crimp System (SCS) control
- Wide family of dies for industrial hoses
- Robust structure
- Fast and ergonomic
- Low noise level

STANDARD



Aluminium Quick Change Gun



SCS Safe Crimp System



Mirror



Electrical Footswitch



Die Storage



Pushing panel

TECHNICAL SPECIFICATIONS

CAPACITY*	NOISE LEVEL
2wb: 3" max.	<65 dB A
4ws: 2" max.	MOTOR
6ws: 2" max.	5.5 kW / 7.5 kW (Fast Version)
Industrial: 4" max.	VOLTAGES
CRIMP RANGE	220/240 V, 3Ph, 50 Hz
4 - 130 mm (0.157 - 5.118")	380/415 V, 3Ph, 50 Hz
CRIMP FORCE	208/240 V, 3Ph, 60 Hz
320 t	380/415 V, 3Ph, 60 Hz
OPENING WITH DIES	DIMENSIONS
+80 mm (+3.149")	1200 x 1000 x 1650 mm
COMPLETE OPENING	(47 x 39 x 64")
207 mm (8.149")	PACKAGING
MASTER DIE LENGTH	1400 x 1100 x 1960 mm
100 mm (3.937")	(55 x 43 x 77")
STANDARD DIES	NET WEIGHT
14, 16, 18, 20, 22, 24, 27, 30, 33, 36, 39, 42, 45, 48, 51, 57, 63, 66, 70, 73, 76	1370 kg (3020 lb)
	GROSS WEIGHT
	1570 kg (3461 lb)

*Indicative capacities depending on hose and fitting type.

OPTIONAL



Die Storage Panel



Marking Dies



Back View Camera



Digital Caliper



Mechanical Backstop



Side Table



Die Sets for Brake & Air Conditioning Hoses



Barcode Reader

MS 480

ASSEMBLING FOR MASS PRODUCTION
STAND TYPE CRIMP MACHINE



KEY FEATURES

- High crimp force
- Large opening
- Safe Crimp System (SCS) control
- Wide family of dies for industrial hoses
- Long master dies
- Robust
- Low noise level

STANDARD



Aluminium Quick Change Gun



SCS Safe Crimp System



Mirror



Electrical Footswitch



Die Storage



Pushing Panel

TECHNICAL SPECIFICATIONS

CAPACITY*

6ws: 3" max.
Industrial: 4" max.

CRIMP RANGE

4 - 160 mm (0.157 - 6.299")

CRIMP FORCE

480 t

OPENING WITH DIES

+85 mm (+3.346")

COMPLETE OPENING

212 mm (8.346")

MASTER DIE LENGTH

125 mm (4.921")

STANDARD DIES

14, 16, 18, 20, 22, 24, 27, 30, 33, 36, 39, 42, 45, 48, 51, 57, 63, 66, 70, 73, 76

NOISE LEVEL

<65 dB A

MOTOR

5.5 kW

VOLTAGES

220/240 V, 3Ph, 50 Hz

380/415 V, 3Ph, 50 Hz

208/240 V, 3Ph, 60 Hz

380/415 V, 3Ph, 60 Hz

DIMENSIONS

1300 x 1050 x 1700 mm

(51 x 41 x 67")

PACKAGING

1400 x 1100 x 1960 mm

(55 x 43 x 77")

NET WEIGHT

1675 kg (3693 lb)

GROSS WEIGHT

1890 kg (4167 lb)

*Indicative capacities depending on hose and fitting type.

OPTIONAL



Die Storage Panel



Marking Dies



Back View Camera



Digital Caliper



Mechanical Backstop



Side Table



Die Sets for Brake & Air Conditioning Hoses



Barcode Reader

MS 800

ASSEMBLING FOR LARGE BORE HOSES
STAND TYPE CRIMP MACHINE



KEY FEATURES

- Designed for heavy duty large bore hydraulic hoses
- High power and speed
- Ergonomically designed for large bore hoses
- Safe Crimp System (SCS) for maximum reliability during the crimping process
- Large opening up to 8"
- Long master dies
- Very high crimping force

STANDARD



Electrical Footswitch



Hose Support



SCS Safe Crimp System



Back View Camera

OPTIONAL



Aluminium Quick Change Gun



Back View Camera



Double Footswitch



Die Storage Panel



Digital Caliper

TECHNICAL SPECIFICATIONS

CAPACITY*

4ws: 4" max.
6ws: 3" max.
Industrial: 6"

CRIMP RANGE

4 - 230 mm (0.157 - 9.055")

CRIMP FORCE

800 t

OPENING WITH DIES

+100 mm (+3.937")

COMPLETE OPENING

347 mm (13.661")

MASTER DIE LENGTH

180 mm (7.087")

NOISE LEVEL

< 70 dB A

MOTOR

7.5 kW

VOLTAGES

380/415 V, 3Ph, 50 Hz

DIMENSIONS

1400 x 1400 x 2060 mm
(55 x 55 x 81")

NET WEIGHT

4300 kg (9480 lb)

GROSS WEIGHT

5000 kg (11023 lb)

TECHNICAL FEATURES

Machine platform equipped with rollers to support the hose at working height (1100 mm) in order to handle large bore hoses more easily

Supplied as standard: Intermediate dies 250/130 and 130/80

*Indicative capacities depending on hose and fitting type.

MS 320 OPEN HEAD

XXL WORKSHOP



KEY FEATURES

- Unique on market
- Lateral opening
- No limit on end connection diameter
- Easy to use
- Separated power pack
- Integrated safety system

STANDARD



Electrical Footswitch



Die Storage

TECHNICAL SPECIFICATIONS

CAPACITY*	VOLTAGES
Industrial: 6"	230 V, 3 Ph
CRIMP RANGE	400 V, 3 Ph
4 - 230 mm (0.157 - 9.055")	MACHINE DIMENSIONS
CRIMP FORCE	1265 x 680 x 1800 mm (50 x 27 x 71")
320 t	POWER PACK DIMENSIONS
OPENING WITH DIES	890 x 800 x 1050 mm (35 x 31 x 41")
+55 mm (+2.165 ")	MACHINE WEIGHT
COMPLETE OPENING	1700 kg (3748 lb)
260 mm (10.236")	POWER PACK WEIGHT
LATERAL OPENING	400 kg (882 lb)
247 mm (9.724")	TECHNICAL FEATURES
MASTER DIE LENGTH	Die sizes available upon request
125 mm (4.921")	
MOTOR	
5.5 kW	

*Indicative capacities depending on hose and fitting type.

OPTIONAL



Double Footswitch



SCS
Safe Crimp System

MS 400 INDUSTRIAL

XXL WORKSHOP



KEY FEATURES

- High crimping force
- Ergonomic operation
- Economic solution
- Large opening
- Robust
- Easy set up
- Versatile
- Adjustable crimping working position

STANDARD



Remote Control



Ergonomic Micrometer



SC

TECHNICAL SPECIFICATIONS

CAPACITY*	MOTOR
Industrial: 6"	5.5 kW
CRIMP RANGE	VOLTAGES
4 - 210 mm (0.157 - 8.268")	230 V, 3 Ph
CRIMP FORCE	400 V, 3 Ph
400 t	DIMENSIONS
OPENING WITH DIES	1100 x 900 x 1550 mm
+60 mm (+2.362")	(43 x 35 x 61")
COMPLETE OPENING	WEIGHT
285 mm (11.221")	750 kg (165 lbs)
MASTER DIE LENGTH	TECHNICAL FEATURES
150 mm (5.906")	Die sizes available upon request

OPTIONAL



Aluminium Quick Change Gun

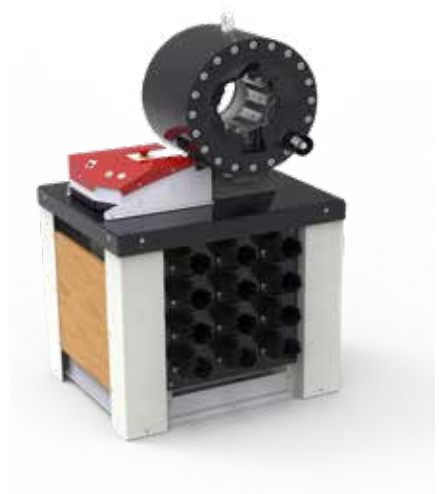
*Indicative capacities depending on hose and fitting type.

MS 450-200/P

XXL WORKSHOP



Version with Remote Head



Production Version with "silent" central unit

KEY FEATURES

- High crimp force (450 tonnes)
- Large opening
- Wide family of dies for industrial hoses
- Long master dies
- Robust & Ergonomic
- Metallic guard for the set stop
- Separated crimping head allowing flexible workshop arrangements
- Production options:
 - "silent" central unit with 50 L tank
 - Table with racks EVO
 - 3 control panels available

CONTROL OPTIONS AVAILABLE ON REQUEST



SC



SCE



SCS

TECHNICAL SPECIFICATIONS

CAPACITY*

Industrial: 4" & 6"

CRIMP RANGE

4 - 180 mm (0.157 - 7.087")

CRIMP FORCE

450 t

OPENING WITH DIES**

+70 mm (+2.755")

MASTER-DIES OPENING***

270 mm (10.629")

MASTER DIE LENGTH

125 mm (4.921")

STANDARD DIES

14, 16, 18, 20, 22, 24, 27, 30, 33, 36, 39, 42, 45, 48, 51, 57, 63, 66, 70, 73, 76;

Dies up to 180 mm available on request.

MOTOR

5.5 kW

VOLTAGES

220/240 V, 3Ph, 50 Hz

380/415 V, 3Ph, 50 Hz

208/240 V, 3Ph, 60 Hz

380/415 V, 3Ph, 60 Hz

DIMENSIONS

830 x 775 x 1450 mm

(33 x 31 x 57")

PACKAGING

1120 x 1020 x 1770 mm

(44 x 40 x 70")

NET WEIGHT

450 kg (992 lb)

750 kg (pro version)

*Indicative capacities depending on hose and fitting type.

** working stroke 24 mm

*** Full passage 230 mm

OPTIONAL



Die Storage Panel



Die Storage Table EVO



Digital Caliper



Aluminium Quick Change Gun



Electrical Footswitch



Marking Dies



Die Sets for Brake & Air Conditioning Hoses

MS 450 XL

8" HOSE CRIMPER



KEY FEATURES

- High crimping force
- Large opening for hoses up to 8" and flanges up to ANSI 150 PSI
- Diameter adjustment is controlled by SCS
- Possibility to install eccentric and/or deformed dies

STANDARD



Aluminium Quick Change Gun



SCS Safe Crimp System



Mirror



Electrical Footswitch



Die Storage



Pushing Panel

TECHNICAL SPECIFICATIONS

CAPACITY*

Industrial: 8"

COMPLETE OPENING

360 mm (14.173")

MAX CRIMPING DIAMETER

300 mm (11.811")
(with special dies)

MAXIMUM DIE LENGTH

130 mm (5.118")

CRIMP FORCE

450 t

GROSS WEIGHT

2900 kg (6393 lb)

OPENING WITH DIES

+ 130 mm (5.118")

TECHNICAL FEATURES

Die sizes available upon request.

OPTIONAL



Die Storage Panel



Marking Dies



Back View Camera



Digital Calliper



Mechanical Backstop



Side Table



Die Sets for Brake & Air Conditioning Hoses



Simple or Double Foot Pedal



Barcode Reader

*Indicative capacities depending on hose and fitting type.

XL CRIMP 550/XL CRIMP 550-16

XXL WORKSHOP

KEY FEATURES

- Very large opening
- Fixed bottom die
- Long dies available
- High crimping force
- Symmetric machine
- Low working height
- Ergonomic
- Safe Crimp System (SCS)
- Step crimping capability with SCS



STANDARD



SCS Safe Crimp System



Die Storage

TECHNICAL SPECIFICATIONS

	XL CRIMP 550	XL CRIMP 550-16
CAPACITY*	Industrial: 12"	Industrial: 16"
CRIMP FORCE	550 t	
COMPLETE OPENING	495 mm (19.2488")	650 mm (25.591")
OPENING WITH DIES	+130 mm (+5.118 ")	+160 mm (6.299")
MASTER DIE LENGTH	200 mm (7.874")	
MOTOR	5.5 kW	
VOLTAGES	230 V, 3 Ph 400 V, 3 Ph	
MACHINE DIMENSIONS	1300 x 1050 x 2230 mm (51 x 41 x 88")	1650 x 1830 x 2660 mm (65 x 72 x 105")
POWER PACK DIMENSIONS	800 x 800 x 1650 mm (31 x 31 x 65")	
MACHINE WEIGHT	4000 kg (8818 lb)	5300 kg (11684 lb)
POWER PACK WEIGHT	400 kg (882 lb)	
TECHNICAL FEATURES	Die sizes available upon request	

*Indicative capacities depending on hose and fitting type.

OPTIONAL



Back View Camera

MOBILE WORKSHOP ON-SITE REPAIR
2-IN-1 MOBILE SOLUTION



Version for hoses 2" Max.

KEY FEATURES

- Mobile solution
- 2-in-1 cutting and crimping
- Rotative head
- Integrated cutting machine
- Scalloped blade for efficient cuts
- Built-in pedal and dust collector
- Storage for hoses, fittings and dies

TECHNICAL SPECIFICATIONS

	VERSION 1 1/4	VERSION 2"
CAPACITY*	4 ws: 1 1/4 max.	4 ws: 2" max.
CRIMP FORCE	137 t	240 t
COMPLETE OPENING	108 mm (4.252")	118 mm (4.646")
OPENING WITH DIES	+28 mm (+1.102")	+38 mm (1.496")
MASTER DIE LENGTH	75 mm (2.953")	100 mm (3.937")
MOTOR	2.2 kW (crimping machine) 3 kW (stand type cutting machine)	
VOLTAGES	220/240 V-1 Ph-50 Hz 220/240 V-1 Ph-60 Hz 380/415 V-3 Ph + N-50 Hz	
MACHINE DIMENSIONS	2520 x 900 x 1670 mm (99 x 35 x 66")	2487 x 810 x 1370 mm (98 x 32 x 54")
MACHINE WEIGHT	382 kg (842 lb)	433 kg (955 lb)
STANDARD DIES	14, 16, 18, 20, 22, 24, 27, 30, 33, 36, 39, 42, 45, 48, 51	14, 16, 18, 20, 22, 24, 27, 30, 33, 36, 39, 42, 45, 48, 51, 57, 63, 66, 70

*Indicative capacities depending on hose and fitting type

OPTIONAL



Aluminium Quick Change Gun

ACCESSORIES AND TOOLS

SAFE CRIMP (SC) SMART CONTROL PANEL

A basic smart control panel, which includes maintenance functions essential for keeping the machine in good condition.

Maintenance functions include:

- **2 Counters:** 1 daily counter and 1 machine cycle counter
- **3 LED Indicator Lights:** 1 for daily maintenance, 1 for advanced maintenance and 1 for expert maintenance
- **Semi-Automatic Function:** The semi-automatic opening is ideal for serial assemblies as it can be adjusted specifically to allow the fitting to pass through the dies with minimal clearance, saving energy by reducing the cycle time.

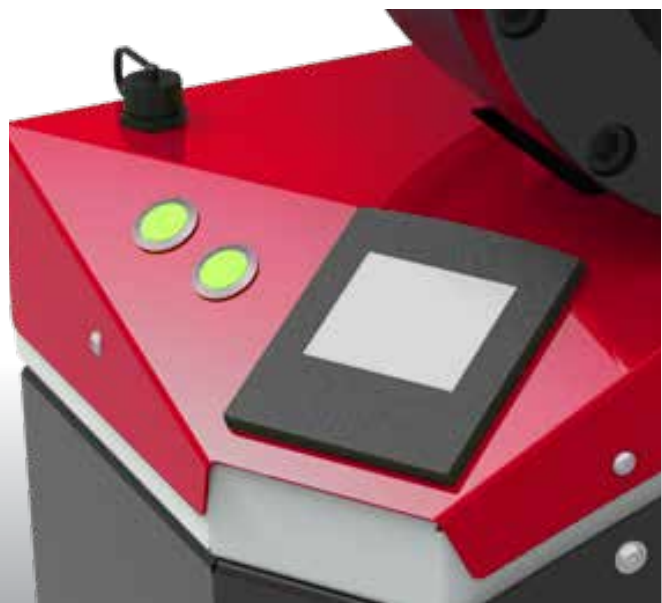


SAFE CRIMP ELECTRICAL PANEL (SCE)

A modern touch screen with electronic buttons, which includes maintenance functions essential for keeping the machine in good condition.

Maintenance functions include:

- **Functions of the SC**
- **Electronic micrometer:** with the possibility to save up to 75 hose configurations and automatic die selection. Recording of 35 die-sets
- **Caliper option:** for automatic correction of the crimping diameter



ACCESSORIES AND TOOLS

SAFE CRIMP SYSTEM (SCS)



Benefits of Safe Crimp System (SCS) control for hose assembly activity:

Friendly and easy setting of crimping parameters including:

- › Pre-set of crimp Ø calibration to compensate ferrule elastic rebound
- › Reminder of dies to be used
- › Easy automatic opening setting

Storage of recurrent and customised crimp recipes: favourite crimp assemblies:

- › Short cuts for faster setting
- › No crimp Ø re-adjusting
- › Possibility to download your customised recipes by USB port and save on separate computer (CSV file)

Production counter for batch quantity control:

- › **Quality monitoring through automatic crimp control**
(Available on certain production and industrial machines)
- › **Continuous measurement of crimping pressure with real time display** (Available on certain production and industrial machines / Optional on benchtop machine screens)
- › **Countdown of crimps to be performed, monitored according to the preset pressure range**
(Available on certain production and industrial machines / Optional on benchtop machine screens)

Operator identification

(Log in / log out)

Maintenance Warnings

INTRODUCTION



Designed to apply proof-pressure testing to assembled hoses, our test benches allow you to test and certify hose assemblies up to 2,000 bar.

MTB 2000 L

TEST BENCH, PROOF PRESSURE & CERTIFY
STAND TYPE MACHINE

KEY FEATURES

- Easy to use and robust
- Safe: Steel Compartment, polycarbonate transparent window and metal mesh
- Large testing area for up to 6 hoses
- Variable pressure up to 2000 bar



Model shown L

AVAILABLE VERSIONS



Power Unit M



Power Unit E

TECHNICAL SPECIFICATIONS

INDICATIVE CAPACITY

3/16" - 2"

HOSE CONNECTION

6 maximum

AIR CONSUMPTION

1000 L/min

OPENING/CLOSING TIME

10-14 seconds

MAX PRESSURE

2000 bar (29000 psi)

INNER TANK CAPACITY

1700 x 790 x 200 mm
(67 x 31 x 8")

DIMENSIONS (PANEL)

700 x 1200 x 1220 mm
(28 x 47 x 48")

PACKAGING (TANK)

1600 x 1200 x 1280 mm
(63 x 47 x 50")

PACKAGING (PANEL)

1000 x 1200 x 1280 mm
(39 x 47 x 50")

NET WEIGHT

430 kg (948 lb)

GROSS WEIGHT

500 kg (1102 lb)

TECHNICAL FEATURES

Minimum compressed air input 8.5 bar (123 psi)

FEATURES AND OPTIONS

DISPLAY FEATURES

M Gauge measurement display

E Numerical measurement display with 4" touch screen and ethernet connection for computer report and light

FURTHER OPTIONS

- Autonomous filling pump
- Air blowing system for both models

MTB 2000 XL

TEST BENCH, PROOF PRESSURE & CERTIFY
STAND TYPE MACHINE



Model shown XL ISD

KEY FEATURES

- Easy to use and robust
- Safe: Steel Compartment, polycarbonate transparent window and metal mesh
- Large testing area for up to 6 hoses
- Variable pressure up to 2000 bar

TECHNICAL SPECIFICATIONS

INDICATIVE CAPACITY	PACKAGING (TANK)
3/16" - 2"	1600 x 1200 x 1280 mm (63 x 47 x 50")
HOSE CONNECTION	PACKAGING (PANEL)
6 maximum	1000 x 1200 x 1280 mm (39 x 47 x 50")
AIR CONSUMPTION	NET WEIGHT
1000 L/min	500 kg (1102 lb)
OPENING/CLOSING TIME	GROSS WEIGHT
10-14 seconds	600 kg (1323 lb)
MAX PRESSURE	TECHNICAL FEATURES
2000 bar (29000 psi)	Minimum compressed air input 8.5 bar (123 psi)
INNER TANK CAPACITY	Minimum test pressure 250 bar (3626 psi), with low pressure option 40 bar (725 psi) (only for XL ISD)
1400 x 900 x 600 mm (55 x 35 x 24")	
DIMENSIONS (PANEL)	
700 x 1200 x 1220 mm (28 x 47 x 48")	

FEATURES AND OPTIONS

STANDARD OPTIONS
XL ISD:
Light included
10" touch screen panel
Printer
XL E:
Light included
Numerical measurement display with 4" touch screen and ethernet connection for computer report.
FURTHER OPTIONS
- Autonomous filling pump
- Air blowing system for both models

INTRODUCTION



We adapt our machines for use in tubes and automotive applications. Depending on the industrial sector or the requirement, we can offer you technical solutions that meet your specific needs.

TUBE APPLICATIONS



POSSIBLE APPLICATIONS

ECO VERSION - after-market manufacturers

PRO VERSION - OEM manufacturers



Tube Stacking



Tube Reduction Before Drawing



Assembling



Geometrical Deformation



Calibration



Insulator



Cement Rods

Activities:
Greenhouse, scaffolding, urban furniture, playground equipment, hand rails, mechanical construction, furniture, etc.

AVAILABLE OPTIONS



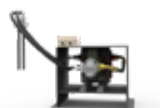
Mechanical Set Stop*



Crimp Head



Special Hydraulic Power Pack



Oil Cooling System



Foot Pedal



Central Greasing System



Computer**

*Accuracy and repeatability optimized

**Pressure and diameters controls, data storage to save recipes, assembly by step, alert maintenance

AUTOMOTIVE APPLICATIONS

INDUSTRIAL
MACHINES
64



POSSIBLE APPLICATIONS

AVAILABLE OPTIONS

Air Spring

Part Calibration - Shock Absorbers, Pulleys

A/C, Brake Hoses, Control Cables

Automotive Pipe

Airbag Inflators

Mechanical Set Stop

Crimp Head

Special Hydraulic Power Pack

Foot Pedal

Central Greasing System

Oil Cooling System

Computer**

*Accuracy and repeatability optimized

**Pressure and diameters controls, data storage to save recipes, assembly by step, alert maintenance

INTRODUCTION



Our machines can be fitted with accessories or additional tools to provide a complete solution that can be upgraded independently as required.

CLEAN KIT



TECHNICAL SPECIFICATIONS

NUMBER OF NOZZLES

10 to suit hose ID

COMPRESSED AIR

7 bar

MINIMUM INTERNAL DIAMETER OF HOSE

6 mm

MAXIMUM INTERNAL DIAMETER

51 mm

TECHNICAL FEATURES

Includes 575 pellets & projectile catcher

DV 32 - OEM DECOILER



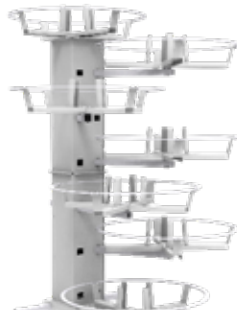
Our range of decoilers easily adapts to different types of reels, from cardboard to plastic and wood, supporting up to 100kg. Stable and equipped with a hose guiding system, they guarantee greater safety and efficiency.

Manuli Hydraulics decoilers are also suitable for winding loose hoses.

The DV version is supplied with manual cutting and, thanks to its low centre of gravity, guarantees excellent stability and ease of hose loading.

The OEM version, in addition to the advantages of the DV version, has an even more efficient and precise height adjustment, facilitating the insertion of the tube into the cutting machine. The motorised version is available on request.

HOSE DECOILERS - HRD 07 / HRD 08



HRD 07

MAXIMUM NUMBER OF COILS	7
MAXIMUM WEIGHT/COIL	80 kg
MINIMUM INTERNAL DIAMETER	150 mm
MAXIMUM EXTERNAL DIAMETER	800 mm
MAXIMUM HEIGHT	170 mm
DIMENSIONS	1450 x 1500 x 2000 mm
NET WEIGHT	129 kg

MAXIMUM NUMBER OF COILS	8
MAXIMUM WEIGHT/COIL	100 kg
MAXIMUM EXTERNAL DIAMETER	600 mm
MAXIMUM WIDTH	450 mm
ROLLER TUBE DIAMETER	60 mm
DIMENSIONS	1450 x 1400 x 2148 mm
NET WEIGHT	150 kg



HRD 08

The coils are not provided.

INDUSTRIAL DECOILER - IDM 2200



400 V, 3Ph, 50 Hz
2600 x 2600 x 1600 mm (102 x 102 x 63")
714 kg (1570 lb)
3 kW with speed control
POWER TORQUE
1200 N
TABLE DIAMETER
2200 mm

Robust, motorised decoiler for large bore industrial hose. Comes with 6 manually adjustable centring pins, remote stop-start controller and a high torque, 3kW motor with speed control.

MHP 80 EVO

PG. 32

DESCRIPTION	N°	CRIMP RANGE
DIE SET N. 06 - LENGTH 56 MM	6	06-07
DIE SET N. 07 - LENGTH 56 MM	7	07-08
DIE SET N. 08 - LENGTH 56 MM	8	08-10
DIE SET N. 10 - LENGTH 56 MM	10	10-12
DIE SET N. 12 - LENGTH 56 MM	12	12-14
DIE SET N. 14 - LENGTH 56 MM	14	14-15
DIE SET N. 15 - LENGTH 56 MM	15	15-16
DIE SET N. 16 - LENGTH 56 MM	16	16-18
DIE SET N. 18 - LENGTH 56 MM	18	18-20
DIE SET N. 20 - LENGTH 56 MM	20	20-21
DIE SET N. 21 - LENGTH 56 MM	21	21-22
DIE SET N. 22 - LENGTH 56 MM	22	22-24
DIE SET N. 24 - LENGTH 56 MM	24	24-27
DIE SET N. 27 - LENGTH 56 MM	27	27-30
DIE SET N. 30 - LENGTH 56 MM	30	30-43
KIT 7 DIE SETS MHP80 (16 18 20 22 24 27 30)	-	-

MHP 110 EVO**PG. 33**

DESCRIPTION	N°	CRIMP RANGE
DIE SET N. 06 - LENGTH 56 MM	6	06-08
DIE SET N. 08 - LENGTH 56 MM	8	08-10
DIE SET N. 10 - LENGTH 56 MM	10	10-12
DIE SET N. 12 - LENGTH 56 MM	12	12-15
DIE SET N. 15 - LENGTH 56 MM	15	15-16
DIE SET N. 16 - LENGTH 56 MM	16	16-18
DIE SET N. 18 - LENGTH 56 MM	18	18-20
DIE SET N. 20 - LENGTH 56 MM	20	20-21
DIE SET N. 21 - LENGTH 56 MM	21	21-22
DIE SET N. 22 - LENGTH 56 MM	22	22-24
DIE SET N. 24 - LENGTH 56 MM	24	24-27
DIE SET N. 27 - LENGTH 56 MM	27	27-30
DIE SET N. 30 - LENGTH 56 MM	30	30-39
KIT 7 DIE SETS MHP110 (16 18 20 22 24 27 30)	-	-

DESCRIPTION	N°	CRIMP RANGE
DIE SET N. 4 - LENGTH 56 MM	4	04-05
DIE SET N. 6 - LENGTH 56 MM	6	06-07
DIE SET N. 7 - LENGTH 56 MM	7	07-08
DIE SET N. 8 - LENGTH 56 MM	8	08-10
DIE SET N. 9 - LENGTH 56 MM	9	09-10
DIE SET N. 10 - LENGTH 56 MM	10	10-12
DIE SET N. 12 - LENGTH 56 MM	12	12-15
DIE SET N. 14 - LENGTH 56 MM	14	14-15
DIE SET N. 15 - LENGTH 56 MM	15	15-16
DIE SET N. 16 - LENGTH 56 MM	16	16-18
DIE SET N. 17 - LENGTH 56 MM	17	17-18
DIE SET N. 18 - LENGTH 56 MM	18	18-21
DIE SET N. 20 - LENGTH 56 MM	20	20-21
DIE SET N. 21 - LENGTH 56 MM	21	21-22
DIE SET N. 22 - LENGTH 56 MM	22	22-24
DIE SET N. 24 - LENGTH 56 MM	24	24-27
DIE SET N. 27 - LENGTH 56 MM	27	27-30
DIE SET N. 30 - LENGTH 56 MM	30	30-33
DIE SET N. 33 - LENGTH 70 MM	33	33-36
DIE SET N. 36 - LENGTH 75 MM	36	36-39
DIE SET N. 39 - LENGTH 70 MM	39	39-42
DIE SET N. 42 - LENGTH 70 MM	42	42-45
DIE SET N. 45 - LENGTH 70 MM	45	45-48
DIE SET N. 48 - LENGTH 70 MM	48	48-51
DIE SET N. 51 - LENGTH 75 MM	51	51-57
KIT 4 DIE SETS MHP 137 (16 20 27 33)	-	-
KIT 5 DIE SETS MHP 137 (16 20 27 33 39)	-	-
KIT 6 DIE SETS MHP 137 (16 18 20 27 33 39)	-	-
KIT 6 DIE SETS MHP 137 (16 18 20 22 27 30)	-	-
KIT 7 DIE SETS MHP 137 (16 18 20 27 33 39 45)	-	-
KIT 9 DIE SETS MHP 137 (16 18 20 24 27 33 39 45 48)	-	-
KIT 9 DIE SETS MHP 137 (16 18 20 24 27 33 39 45 48)	-	-
KIT 11 DIE SETS MHP 137 (16 18 20 22 24 27 30 33 39 45 48)	-	-
KIT 15 DIE SETS H CRIMP 137 (14 16 18 20 22 24 27 30 33 36 39 42 45 48 51)		

MRB 70 EVO R**PG. 35**

DESCRIPTION	N°	CRIMP RANGE
DIE SET N. 6 - LENGTH 56 MM	6	06-08
DIE SET N. 8 - LENGTH 56 MM	8	08-10
DIE SET N. 10 - LENGTH 56 MM	10	10-12
DIE SET N. 12 - LENGTH 56 MM	12	12-14
DIE SET N. 14 - LENGTH 56 MM	14	14-15
DIE SET N. 15 - LENGTH 56 MM	15	15-16
DIE SET N. 16 - LENGTH 56 MM	16	16-18
DIE SET N. 18 - LENGTH 56 MM	18	18-20
DIE SET N. 20 - LENGTH 56 MM	20	20-21
DIE SET N. 21 - LENGTH 56 MM	21	21-22
DIE SET N. 22 - LENGTH 56 MM	22	22-24
DIE SET N. 24 - LENGTH 56 MM	24	24-27
DIE SET N. 27 - LENGTH 56 MM	27	27-30
DIE SET N. 30 - LENGTH 56 MM	30	30-39
KIT 3 DIE SETS HCRIMP110 (16 20 27)	-	-
KIT 7 DIE SETS HCRIMP110 (16 18 20 22 24 27 30)	-	-

MRB 137 EVO R

PG. 36

DESCRIPTION	N°	CRIMP RANGE
DIE SET N. 4 - LENGTH 56 MM	4	04-05
DIE SET N. 6 - LENGTH 56 MM	6	06-07
DIE SET N. 7 - LENGTH 56 MM	7	07-08
DIE SET N. 8 - LENGTH 56 MM	8	08-10
DIE SET N. 9 - LENGTH 56 MM	9	09-10
DIE SET N. 10 - LENGTH 56 MM	10	10-12
DIE SET N. 12 - LENGTH 56 MM	12	12-15
DIE SET N. 14 - LENGTH 56 MM	14	14-15
DIE SET N. 15 - LENGTH 56 MM	15	15-16
DIE SET N. 16 - LENGTH 56 MM	16	16-17
DIE SET N. 17 - LENGTH 56 MM	17	17-18
DIE SET N. 18 - LENGTH 56 MM	18	18-19
DIE SET N. 19 - LENGTH 56 MM	19	19-20
DIE SET N. 20 - LENGTH 56 MM	20	20-21
DIE SET N. 21 - LENGTH 56 MM	21	21-22
DIE SET N. 22 - LENGTH 56 MM	22	22-23
DIE SET N. 23 - LENGTH 56 MM	23	23-24
DIE SET N. 24 - LENGTH 56 MM	24	24-27
DIE SET N. 27 - LENGTH 56 MM	27	27-30
DIE SET N. 30 - LENGTH 56 MM	30	30-33
DIE SET N. 33 - LENGTH 70 MM	33	33-36
DIE SET N. 36 - LENGTH 75 MM	36	36-39
DIE SET N. 39 - LENGTH 70 MM	39	39-42
DIE SET N. 42 - LENGTH 70 MM	42	42-45
DIE SET N. 45 - LENGTH 70 MM	45	45-48
DIE SET N. 48 - LENGTH 70 MM	48	48-51
DIE SET N. 51 - LENGTH 75 MM	51	51-57
KIT 4 DIE SETS MRB137EVOR (16 20 27 33)	-	-
KIT 5 DIE SETS MRB137EVOR ((16 20 27 33 39)	-	-
KIT 6 DIE SETS MRB137EVOR (16 18 20 27 33 39)	-	-
KIT 6 DIE SETS MRB137EVOR (18 20 24 27 30 39)	-	-
KIT 6 DIE SETS MRB137EVOR (16 18 20 22 27 30)	-	-
KIT 7 DIE SETS MRB137EVOR (16 18 20 27 33 39 45)	-	-
KIT 9 DIE SETS MRB137EVOR (16 18 20 24 27 33 39 45 48)	-	-
KIT 9 DIE SETS MRB137EVOR (16 18 20 24 27 30 33 39 48)	-	-
KIT 11 DIE SETS MRB137EVOR (16 18 20 22 24 27 30 33 39 45 48)	-	-
KIT 12 DIE SETS MRB137EVOR (16 18 20 22 24 27 30 33 36 39 42 45 48)	-	-
KIT 15 DIE SETS MRB137EVOR (14 16 18 20 22 24 27 30 33 36 39 42 45 48 51)	-	-

MB 137 EVO

PG. 37

DESCRIPTION	N°	CRIMP RANGE
DIE SET N. 4 - LENGTH 56 MM	4	04-05
DIE SET N. 6 - LENGTH 56 MM	6	06-07
DIE SET N. 7 - LENGTH 56 MM	7	07-08
DIE SET N. 9 - LENGTH 56 MM	9	09-10
DIE SET N. 8 - LENGTH 56 MM	8	08-10
DIE SET N. 10 - LENGTH 56 MM	10	10-12
DIE SET N. 12 - LENGTH 56 MM	12	12-15
DIE SET N. 14 - LENGTH 56 MM	14	14-15
DIE SET N. 15 - LENGTH 56 MM	15	15-18
DIE SET N. 16 - LENGTH 56 MM	16	16-18
DIE SET N. 17 - LENGTH 56 MM	17	17-18
DIE SET N. 18 - LENGTH 56 MM	18	18-21
DIE SET N. 19 - LENGTH 56 MM	19	19-20
DIE SET N. 20 - LENGTH 56 MM	20	20-21
DIE SET N. 21 - LENGTH 56 MM	21	21-24
DIE SET N. 22 - LENGTH 56 MM	22	22-24
DIE SET N. 23 - LENGTH 56 MM	23	23-24
DIE SET N. 24 - LENGTH 56 MM	24	24-27
DIE SET N. 27 - LENGTH 56 MM	27	27-30
DIE SET N. 30 - LENGTH 56 MM	30	30-33
DIE SET N. 33 - LENGTH 70 MM	33	33-36
DIE SET N. 36 - LENGTH 75 MM	36	36-39
DIE SET N. 39 - LENGTH 70 MM	39	39-42
DIE SET N. 42 - LENGTH 70 MM	42	42-45
DIE SET N. 45 - LENGTH 70 MM	45	45-48
DIE SET N. 48 - LENGTH 70 MM	48	48-51
DIE SET N. 51 - LENGTH 75 MM	51	51-57
KIT 4 DIE SETS MB137EVO (16 20 27 33)	-	-
KIT 5 DIE SETS MB137EVO (16 20 27 33 39)	-	-
KIT 6 DIE SETS MB137EVO (16 18 20 27 33 39)	-	-
KIT 6 DIE SETS MB137EVO (16 18 20 22 27 30)	-	-
KIT 7 DIE SETS MB137EVO (16 18 20 27 33 39 45)	-	-
KIT 9 DIE SETS MB137EVO (16 18 20 24 27 33 39 45 48)	-	-
KIT 9 DIE SETS MB137EVO (16 18 20 24 27 30 33 39 48)	-	-
KIT 11 DIE SETS MB137EVO (16 18 20 22 24 27 30 33 39 45 48)	-	-
KIT 15 DIE SETS MB137EVO (14 16 18 20 22 24 27 30 33 36 39 42 45 48 51)	-	-

MB 240 EVO

PG. 38

DESCRIPTION	N°	CRIMP RANGE
DIE SET N. 4 - LENGTH 56 MM	4	04-05
DIE SET N. 6 - LENGTH 56 MM	6	06-08
DIE SET N. 7 - LENGTH 56 MM	7	07-08
DIE SET N. 8 - LENGTH 56 MM	8	08-09
DIE SET N. 9 - LENGTH 56 MM	9	09-10
DIE SET N. 10 - LENGTH 56 MM	10	10-12
DIE SET N. 12 - LENGTH 56 MM	12	12-15
DIE SET N. 14 - LENGTH 56 MM	14	14-15
DIE SET N. 15 - LENGTH 56 MM	15	15-18
DIE SET N. 16 - LENGTH 56 MM	16	16-18
DIE SET N. 17 - LENGTH 56 MM	17	17-18
DIE SET N. 18 - LENGTH 56 MM	18	18-21
DIE SET N. 19 - LENGTH 56 MM	19	19-20
DIE SET N. 20 - LENGTH 56 MM	20	20-21
DIE SET N. 21 - LENGTH 56 MM	21	21-24
DIE SET N. 22 - LENGTH 56 MM	22	22-24
DIE SET N. 23 - LENGTH 56 MM	23	23-24
DIE SET N. 24 - LENGTH 70 MM	24	24-27
DIE SET N. 27 - LENGTH 90 MM	27	27-30
DIE SET N. 30 - LENGTH 90 MM	30	30-33
DIE SET N. 33 - LENGTH 90 MM	33	33-36
DIE SET N. 36 - LENGTH 90 MM	36	36-39
DIE SET N. 39 - LENGTH 90 MM	39	39-42
DIE SET N. 42 - LENGTH 90 MM	42	42-45
DIE SET N. 45 - LENGTH 100 MM	45	45-48
DIE SET N. 48 - LENGTH 100 MM	48	48-51
DIE SET N. 51 - LENGTH 100 MM	51	51-57
DIE SET N. 54 - LENGTH 110 MM	54	54-57
DIE SET N. 57 - LENGTH 100 MM	57	57-62
DIE SET N. 60 - LENGTH 100 MM	60	60-62
DIE SET N. 62 - LENGTH 110 MM	62	62-66
DIE SET N. 63 - LENGTH 110 MM	63	63-66
DIE SET N. 66 - LENGTH 100 MM	66	66-70
DIE SET N. 70 - LENGTH 100 MM	70	70-72
DIE SET N. 72 - LENGTH 100 MM	72	72-80
KIT 8 DIE SETS MB240EVO (16 18 20 22 27 30 36 42)		
KIT 9 DIE SETS MB240EVO (16 18 20 22 24 27 33 39 45)	-	-
KIT 11 DIE SETS MB240EVO (16 18 20 22 24 27 33 39 45 51 57)	-	-
KIT 12 DIE SETS MB240EVO (16 18 20 22 27 30 33 39 48 51 57 66)	-	-
KIT 13 DIE SETS MB240EVO (16 18 20 22 24 27 30 33 39 45 51 57 66)		
KIT 16 DIE SETS MB240EVO (16 18 20 22 24 27 30 33 36 39 42 45 48 51 57 66)		
KIT 19 DIE SETS MB240EVO (14 16 18 20 22 24 27 30 33 36 39 42 45 48 51 57 63 66 70)	-	-

MB 350 EVO - L

PG. 39

DESCRIPTION	N°	CRIMP RANGE
DIE SET N. 4 - LENGTH 56 MM	4	04-05
DIE SET N. 6 - LENGTH 56 MM	6	06-08
DIE SET N. 7 - LENGTH 56 MM	7	07-08
DIE SET N. 8 - LENGTH 56 MM	8	08-09
DIE SET N. 9 - LENGTH 56 MM	9	09-10
DIE SET N. 10 - LENGTH 56 MM	10	10-12
DIE SET N. 12 - LENGTH 56 MM	12	12-15
DIE SET N. 14 - LENGTH 56 MM	14	14-15
DIE SET N. 15 - LENGTH 56 MM	15	15-18
DIE SET N. 16 - LENGTH 56 MM	16	16-18
DIE SET N. 17 - LENGTH 56 MM	17	17-18
DIE SET N. 18 - LENGTH 56 MM	18	18-21
DIE SET N. 20 - LENGTH 56 MM	20	20-21
DIE SET N. 21 - LENGTH 56 MM	21	21-24
DIE SET N. 22 - LENGTH 56 MM	22	22-23
DIE SET N. 23 - LENGTH 56 MM	23	23-24
DIE SET N. 24 - LENGTH 70 MM	24	24-27
DIE SET N. 27 - LENGTH 90 MM	27	27-30
DIE SET N. 30 - LENGTH 90 MM	30	30-33
DIE SET N. 33 - LENGTH 90 MM	33	33-36
DIE SET N. 36 - LENGTH 90 MM	36	36-39
DIE SET N. 39 - LENGTH 90 MM	39	39-42
DIE SET N. 42 - LENGTH 90 MM	42	42-45
DIE SET N. 45 - LENGTH 100 MM	45	45-48
DIE SET N. 48 - LENGTH 100 MM	48	48-51
DIE SET N. 51 - LENGTH 110 MM	51	51-57
DIE SET N. 54 - LENGTH 110 MM	54	54-57
DIE SET N. 57 - LENGTH 110 MM	57	57-62
DIE SET N. 60 - LENGTH 110 MM	60	60-62
DIE SET N. 62 - LENGTH 125 MM	62	62-66
DIE SET N. 63 - LENGTH 125 MM	63	63-66
DIE SET N. 66 - LENGTH 110 MM	66	66-70
DIE SET N. 66* - LENGTH 125 MM	66*	66-70
DIE SET N. 70 - LENGTH 100 MM	70	70-72
DIE SET N. 70* - LENGTH 125 MM	70 *	70-72
DIE SET N. 73 - LENGTH 125 MM	73	73-76
DIE SET N. 75 - LENGTH 125 MM	75	75-76
DIE SET N. 76 - LENGTH 125 MM	76	76-86
DIE SET N. 80 - LENGTH 125 MM	80	80-86
DIE SET N. 86 - LENGTH 125 MM	86	86-90
DIE SET N. 90 - LENGTH 125 MM	90	90-95
DIE SET N. 95 - LENGTH 125 MM	95	95-105
DIE SET N. 99 - LENGTH 125 MM	99	99-109
DIE SET N. 112 - LENGTH 125 MM	112	112-117
DIE SET N. 117 - LENGTH 125 MM	117	117-122
DIE SET N. 122 - LENGTH 125 MM	122	122-127
KIT 13 DIE SETS MB350EVO/L (16 18 20 24 27 30 33 39 48 51 57 66 73)	-	-
KIT 21 DIE SETS MB350EVO/L (14 16 18 20 22 24 27 30 33 36 39 42 45 48 51 57 63 66 70 73 76)	-	-

GOLDENCRIMP 420 EVO

PG. 40

DESCRIPTION	N°	CRIMP RANGE
DIE SET N. 4 - LENGTH 56 MM	4	04-05
DIE SET N. 6 - LENGTH 56 MM	6	06-08
DIE SET N. 7 - LENGTH 56 MM	7	07-08
DIE SET N. 8 - LENGTH 56 MM	8	08-09
DIE SET N. 10 - LENGTH 56 MM	10	10-12
DIE SET N. 12 - LENGTH 56 MM	12	12-15
DIE SET N. 14 - LENGTH 56 MM	14	14-15
DIE SET N. 15 - LENGTH 56 MM	15	15-17
DIE SET N. 16 - LENGTH 56 MM	16	16-18
DIE SET N. 17 - LENGTH 56 MM	17	17-18
DIE SET N. 18 - LENGTH 56 MM	18	18-21
DIE SET N. 20 - LENGTH 56 MM	20	20-21
DIE SET N. 21 - LENGTH 56 MM	21	21-24
DIE SET N. 22 - LENGTH 56 MM	22	22-23
DIE SET N. 23 - LENGTH 56 MM	23	23-24
DIE SET N. 24 - LENGTH 70 MM	24	24-27
DIE SET N. 27 - LENGTH 90 MM	27	27-30
DIE SET N. 30 - LENGTH 90 MM	30	30-33
DIE SET N. 33 - LENGTH 90 MM	33	33-36
DIE SET N. 36 - LENGTH 90 MM	36	36-39
DIE SET N. 39 - LENGTH 90 MM	39	39-42
DIE SET N. 42 - LENGTH 90 MM	42	42-45
DIE SET N. 45 - LENGTH 100 MM	45	45-48
DIE SET N. 48 - LENGTH 100 MM	48	48-51
DIE SET N. 51 - LENGTH 110 MM	51	51-57
DIE SET N. 54 - LENGTH 110 MM	54	54-57
DIE SET N. 57 - LENGTH 110 MM	57	57-62
DIE SET N. 60 - LENGTH 110 MM	60	60-62
DIE SET N. 62 - LENGTH 110 MM	62	60-62
DIE SET N. 62* - LENGTH 125 MM	62*	62-66
DIE SET N. 63 - LENGTH 56 MM	63	63-66
DIE SET N. 66 - LENGTH 110 MM	66	66-70
DIE SET N. 66* - LENGTH 125 MM	66*	66-70
DIE SET N. 70 - LENGTH 100 MM	70	70-72
DIE SET N. 70* - LENGTH 125 MM	70*	70-72
DIE SET N. 73 - LENGTH 125 MM	73	73-76
DIE SET N. 75 - LENGTH 125 MM	75	75-76
DIE SET N. 76 - LENGTH 125 MM	76	76-86
DIE SET N. 76* - LENGTH 135 MM	76*	76-86
DIE SET N. 80 - LENGTH 125 MM	80	80-82
DIE SET N. 82 - LENGTH 135 MM	82	82-90
DIE SET N. 86 - LENGTH 125 MM	86	86-90
DIE SET N. 90 - LENGTH 125 MM	90	90-95
DIE SET N. 95 - LENGTH 125 MM	95	95-105
DIE SET N. 99 - LENGTH 125 MM	99	99-109
DIE SET N. 112 - LENGTH 125 MM	112	112-117
DIE SET N. 117 - LENGTH 125 MM	117	117-122
DIE SET N. 122 - LENGTH 125 MM	122	122-127
KIT 21 DIE SETS GOLDENCRIMP420EVO (14 16 18 20 22 24 27 30 33 36 39 42 45 48 51 57 63 66 70 73 76)	-	-

GOLDENCRIMP 450

PG. 41

DESCRIPTION	N°	CRIMP RANGE
DIE SET N. 4 - LENGTH 56 MM	4	04-05
DIE SET N. 6 - LENGTH 56 MM	6	06-08
DIE SET N. 7 - LENGTH 56 MM	7	07-08
DIE SET N. 8 - LENGTH 56 MM	8	08-09
DIE SET N. 10 - LENGTH 56 MM	10	10-12
DIE SET N. 12 - LENGTH 56 MM	12	12-15
DIE SET N. 14 - LENGTH 56 MM	14	14-15
DIE SET N. 15 - LENGTH 56 MM	15	15-17
DIE SET N. 16 - LENGTH 56 MM	16	16-18
DIE SET N. 17 - LENGTH 56 MM	17	17-18
DIE SET N. 18 - LENGTH 56 MM	18	18-21
DIE SET N. 20 - LENGTH 56 MM	20	20-21
DIE SET N. 21 - LENGTH 56 MM	21	21-24
DIE SET N. 22 - LENGTH 56 MM	22	22-23
DIE SET N. 23 - LENGTH 70 MM	23	23-24
DIE SET N. 24 - LENGTH 70 MM	24	24-27
DIE SET N. 27 - LENGTH 90 MM	27	27-30
DIE SET N. 30 - LENGTH 90 MM	30	30-33
DIE SET N. 33 - LENGTH 90 MM	33	33-36
DIE SET N. 36 - LENGTH 90 MM	36	36-39
DIE SET N. 39 - LENGTH 90 MM	39	39-42
DIE SET N. 42 - LENGTH 90 MM	42	42-45
DIE SET N. 45 - LENGTH 100 MM	45	45-48
DIE SET N. 48 - LENGTH 100 MM	48	48-51
DIE SET N. 51 - LENGTH 110 MM	51	51-57
DIE SET N. 54 - LENGTH 110 MM	54	54-57
DIE SET N. 57 - LENGTH 110 MM	57	57-62
DIE SET N. 60 - LENGTH 110 MM	60	60-62
DIE SET N. 62 - LENGTH 110 MM	62	60-62
DIE SET N. 62* - LENGTH 125 MM	62*	62-66
DIE SET N. 63 - LENGTH 125 MM	63	63-66
DIE SET N. 66 - LENGTH 110 MM	66	66-70
DIE SET N. 66* - LENGTH 125 MM	66*	66-70
DIE SET N. 70 - LENGTH 100 MM	70	70-72
DIE SET N. 70* - LENGTH 125 MM	70*	70-72
DIE SET N. 72 - LENGTH 100 MM	72	72-73
DIE SET N. 73 - LENGTH 125 MM	73	73-76
DIE SET N. 76 - LENGTH 135 MM	76	76-86
DIE SET N. 76* - LENGTH 135 MM	76*	76-86
DIE SET N. 80 - LENGTH 125 MM	80	80-82
DIE SET N. 82 - LENGTH 135 MM	82	82-90
DIE SET N. 86 - LENGTH 150 MM	86	86-90
DIE SET N. 90 - LENGTH 125 MM	90	90-95
DIE SET N. 95 - LENGTH 150 MM	95	95-105
DIE SET N. 99 - LENGTH 125 MM	99	99-109

GOLDENCRIMP 450 (Continued)

PG. 41

DESCRIPTION	N°	CRIMP RANGE
DIE SET N. 105 - LENGTH 150 MM	105	105-112
DIE SET N. 112 - LENGTH 150 MM	112	112-117
DIE SET N. 117 - LENGTH 125 MM	117	117-122
DIE SET N. 122 - LENGTH 125 MM	122	122-127
KIT 14 DIE SETS GOLDENCRIMP450 (16 18 20 22 24 27 30 33 39 45 51 57 66 73)	-	-
KIT 21 DIE SETS GOLDENCRIMP450 (14 16 18 20 22 24 27 30 33 36 39 42 45 48 51 57 63 66 70 73 76)	-	-

MRV 137 EVO R

PG. 42

DESCRIPTION	N°	CRIMP RANGE
DIE SET N. 4 - LENGTH 56 MM	4	04-05
DIE SET N. 6 - LENGTH 56 MM	6	06-08
DIE SET N. 7 - LENGTH 56 MM	7	07-08
DIE SET N. 8 - LENGTH 56 MM	8	08-10
DIE SET N. 9 - LENGTH 56 MM	9	09-10
DIE SET N. 10 - LENGTH 56 MM	10	10-12
DIE SET N. 12 - LENGTH 56 MM	12	12-15
DIE SET N. 14 - LENGTH 56 MM	14	14-15
DIE SET N. 15 - LENGTH 56 MM	15	15-18
DIE SET N. 16 - LENGTH 56 MM	16	16-18
DIE SET N. 17 - LENGTH 56 MM	17	17-18
DIE SET N. 18 - LENGTH 56 MM	18	18-21
DIE SET N. 19 - LENGTH 56 MM	19	19-20
DIE SET N. 20 - LENGTH 56 MM	20	20-21
DIE SET N. 21 - LENGTH 56 MM	21	21-24
DIE SET N. 22 - LENGTH 56 MM	22	22-23
DIE SET N. 23 - LENGTH 56 MM	23	23-24
DIE SET N. 24 - LENGTH 56 MM	24	24-27
DIE SET N. 27 - LENGTH 56 MM	27	27-30
DIE SET N. 30 - LENGTH 56 MM	30	30-33
DIE SET N. 33 - LENGTH 70 MM	33	33-36
DIE SET N. 36 - LENGTH 75 MM	36	36-39
DIE SET N. 39 - LENGTH 70 MM	39	39-42
DIE SET N. 42 - LENGTH 70 MM	42	42-45
DIE SET N. 45 - LENGTH 70 MM	45	45-48
DIE SET N. 48 - LENGTH 70 MM	48	48-51
DIE SET N. 51 - LENGTH 75 MM	51	51-57
KIT 4 DIE SETS MVB137EVOR (16 20 27 33)	-	-
KIT 5 DIE SETS MVB137EVOR (16 20 27 33 39)	-	-
KIT 6 DIE SETS MVB137EVOR (16 18 20 27 33 39)	-	-
KIT 6 DIE SETS MVB137EVOR (16 18 20 22 27 30)	-	-
KIT 7 DIE SETS MVB137EVOR (16 18 20 27 33 39 45)	-	-
KIT 9 DIE SETS MVB137EVOR (16 18 20 24 27 33 39 45 48)	-	-
KIT 9 DIE SETS MVB137EVOR (16 18 20 24 27 30 33 39 48)	-	-
KIT 11 DIE SETS MVB137EVOR (16 18 20 22 24 27 30 33 39 45 48)	-	-
KIT 12 DIE SETS MVB137EVOR (16 18 20 22 24 27 30 33 36 39 42 48)	-	-
KIT 15 DIE SETS MVB137EVOR (14 16 18 20 22 24 27 30 33 36 39 42 45 48 51)	-	-

MV 137 / 137 L

PG. 43

DESCRIPTION	N°	CRIMP RANGE
DIE SET N. 4 - LENGTH 56 MM	4	04-05
DIE SET N. 6 - LENGTH 56 MM	6	06-08
DIE SET N. 7 - LENGTH 56 MM	7	07-08
DIE SET N. 8 - LENGTH 56 MM	8	08-10
DIE SET N. 9 - LENGTH 56 MM	9	09-10
DIE SET N. 10 - LENGTH 56 MM	10	10-12
DIE SET N. 12 - LENGTH 56 MM	12	12-15
DIE SET N. 14 - LENGTH 56 MM	14	14-15
DIE SET N. 15 - LENGTH 56 MM	15	15-18
DIE SET N. 16 - LENGTH 56 MM	16	16-18
DIE SET N. 17 - LENGTH 56 MM	17	17-18
DIE SET N. 18 - LENGTH 56 MM	18	18-21
DIE SET N. 20 - LENGTH 56 MM	20	20-21
DIE SET N. 21 - LENGTH 56 MM	21	21-24
DIE SET N. 22 - LENGTH 56 MM	22	22-23
DIE SET N. 23 - LENGTH 56 MM	23	23-24
DIE SET N. 24 - LENGTH 56 MM	24	24-27
DIE SET N. 27 - LENGTH 56 MM	27	27-30
DIE SET N. 30 - LENGTH 56 MM	30	30-33
DIE SET N. 33 - LENGTH 70 MM	33	33-36
DIE SET N. 36 - LENGTH 75 MM	36	36-39
DIE SET N. 39 - LENGTH 70 MM	39	39-42
DIE SET N. 42 - LENGTH 70 MM	42	42-45
DIE SET N. 45 - LENGTH 70 MM	45	45-48
DIE SET N. 48 - LENGTH 70 MM	48	48-51
DIE SET N. 51 - LENGTH 75 MM	51	51-57
KIT 4 DIE SETS MV137L (16 20 27 33)	-	-
KIT 5 DIE SETS MV137L (16 20 27 33 39)	-	-
KIT 6 DIE SETS MV137L (16 18 20 27 33 39)	-	-
KIT 6 DIE SETS MV137L (16 18 20 22 27 30)	-	-
KIT 7 DIE SETS MV137L (16 18 20 27 33 39 45)	-	-
KIT 9 DIE SETS MV137L (16 18 20 24 27 33 39 45 48)	-	-
KIT 9 DIE SETS MV137L (16 18 20 24 27 30 33 39 48)	-	-
KIT 11 DIE SETS MV137L (16 18 20 22 24 27 30 33 39 45 48)	-	-
KIT 15 DIE SETS MV137L (14 16 18 20 22 24 27 30 33 36 39 42 45 48 51)	-	-

MV 240 / 240 L

PG. 44

DESCRIPTION	N°	CRIMP RANGE
DIE SET N. 4 - LENGTH 56 MM	4	04-05
DIE SET N. 6 - LENGTH 56 MM	6	06-08
DIE SET N. 7 - LENGTH 56 MM	7	07-08
DIE SET N. 8 - LENGTH 56 MM	8	08-09
DIE SET N. 9 - LENGTH 56 MM	9	09-10
DIE SET N. 10 - LENGTH 56 MM	10	10-12
DIE SET N. 12 - LENGTH 56 MM	12	12-15
DIE SET N. 14 - LENGTH 56 MM	14	14-15
DIE SET N. 15 - LENGTH 56 MM	15	15-18
DIE SET N. 16 - LENGTH 56 MM	16	16-18
DIE SET N. 17 - LENGTH 56 MM	17	17-18
DIE SET N. 18 - LENGTH 56 MM	18	18-21
DIE SET N. 20 - LENGTH 56 MM	20	17-18
DIE SET N. 21 - LENGTH 56 MM	21	21-24
DIE SET N. 22 - LENGTH 56 MM	22	22-23
DIE SET N. 23 - LENGTH 56 MM	23	23-24
DIE SET N. 24 - LENGTH 70 MM	24	24-27
DIE SET N. 27 - LENGTH 90 MM	27	27-30
DIE SET N. 30 - LENGTH 90 MM	30	30-33
DIE SET N. 33 - LENGTH 90 MM	33	33-36
DIE SET N. 36 - LENGTH 90 MM	36	36-39
DIE SET N. 39 - LENGTH 90 MM	39	39-42
DIE SET N. 42 - LENGTH 90 MM	42	42-45
DIE SET N. 45 - LENGTH 100 MM	45	45-48
DIE SET N. 48 - LENGTH 100 MM	48	48-51
DIE SET N. 51 - LENGTH 100 MM	51	51-57
DIE SET N. 54 - LENGTH 100 MM	54	54-57
DIE SET N. 57 - LENGTH 100 MM	57	57-62
DIE SET N. 60 - LENGTH 100 MM	60	60-62
DIE SET N. 62 - LENGTH 110 MM	62	62-66
DIE SET N. 63 - LENGTH 105 MM	23	63-66
DIE SET N. 66 - LENGTH 100 MM	66	66-70
DIE SET N. 70 - LENGTH 100 MM	70	70-72
DIE SET N. 72 - LENGTH 100 MM	72	72-80
KIT 9 DIE SETS MV240 (16 18 20 22 24 27 33 39 45)	-	-
KIT 11 DIE SETS MV240 (16 18 20 22 24 27 33 39 45 51 57)	-	-
KIT 12 DIE SETS MV240 (18 20 22 27 30 33 39 48 51 57 66 70)	-	-
KIT 13 DIE SETS MV240 (16 18 20 22 24 27 30 33 39 45 51 57 66)	-	-
KIT 19 DIE SETS MV240 (14 16 18 20 22 24 27 30 33 36 39 42 45 48 51 57 63 66 70)	-	-

MV 350 / 350 L

PG. 45

DESCRIPTION	N°	CRIMP RANGE
DIE SET N. 4 - LENGTH 56 MM	4	04-05
DIE SET N. 6 - LENGTH 56 MM	6	06-08
DIE SET N. 7 - LENGTH 56 MM	7	07-08
DIE SET N. 8 - LENGTH 56 MM	8	08-09
DIE SET N. 9 - LENGTH 56 MM	9	09-10
DIE SET N. 10 - LENGTH 56 MM	10	10-12
DIE SET N. 12 - LENGTH 56 MM	12	12-15
DIE SET N. 14 - LENGTH 56 MM	14	14-15
DIE SET N. 15 - LENGTH 56 MM	15	15-18
DIE SET N. 16 - LENGTH 56 MM	16	16-18
DIE SET N. 17 - LENGTH 56 MM	17	17-18
DIE SET N. 18 - LENGTH 56 MM	18	18-21
DIE SET N. 20 - LENGTH 56 MM	20	17-18
DIE SET N. 21 - LENGTH 56 MM	21	21-24
DIE SET N. 22 - LENGTH 56 MM	22	22-23
DIE SET N. 23 - LENGTH 56 MM	23	23-24
DIE SET N. 24 - LENGTH 70 MM	24	24-27
DIE SET N. 27 - LENGTH 90 MM	27	27-30
DIE SET N. 30 - LENGTH 90 MM	30	30-33
DIE SET N. 33 - LENGTH 90 MM	33	33-36
DIE SET N. 36 - LENGTH 90 MM	36	36-39
DIE SET N. 39 - LENGTH 90 MM	39	39-42
DIE SET N. 42 - LENGTH 90 MM	42	42-45
DIE SET N. 45 - LENGTH 100 MM	45	45-48
DIE SET N. 48 - LENGTH 100 MM	48	48-51
DIE SET N. 51 - LENGTH 100 MM	51	51-57
DIE SET N. 54 - LENGTH 100 MM	54	54-57
DIE SET N. 57 - LENGTH 100 MM	57	57-62
DIE SET N. 60 - LENGTH 100 MM	60	60-62
DIE SET N. 62 - LENGTH 110 MM	62	62-66
DIE SET N. 63 - LENGTH 105 MM	63	63-66
DIE SET N. 66 - LENGTH 110 MM*	66	66-70
DIE SET N. 66 - LENGTH 125 MM	66	66-70
DIE SET N. 70 - LENGTH 100 MM	70	70-72
DIE SET N. 70 - LENGTH 125 MM*	70	70-72
DIE SET N. 73 - LENGTH 125 MM	73	73-76
DIE SET N. 75 - LENGTH 125 MM	75	75-76
DIE SET N. 76 - LENGTH 125 MM	76	76-86
DIE SET N. 80 - LENGTH 125 MM	80	80-86
DIE SET N. 86 - LENGTH 125 MM	86	86-90
DIE SET N. 90 - LENGTH 125 MM	90	90-95
DIE SET N. 95 - LENGTH 125 MM	95	95-105
DIE SET N. 99 - LENGTH 125 MM	99	99-109
DIE SET N. 112 - LENGTH 125 MM	112	112-117
DIE SET N. 117 - LENGTH 125 MM	117	117-122
DIE SET N. 122 - LENGTH 125 MM	122	122-127

MV 350 / 350 L (Continued)**PG. 46**

DESCRIPTION	N°	CRIMP RANGE
KIT 10 DIE SETS MV350 (16 18 20 22 27 30 36 42 48 51)	-	-
KIT 12 DIE SETS MV350 (16 18 20 22 24 27 33 39 45 51 57 66)	-	-
KIT 13 DIE SETS MV350 (16 18 20 24 27 30 33 39 48 51 57 66 73)	-	-
KIT 14 DIE SETS MV350 (16 18 20 22 24 27 30 33 39 45 51 57 66 73)	-	-
KIT 21 DIE SETS MV350 (14 16 18 20 22 24 27 30 33 36 39 42 45 48 51 57 63 66 70 73 76)	-	-

N CRIMP 70/80**PG. 46****DESCRIPTION**

DESCRIPTION
SET OF NUT CRIMPING DIES N.12 PEP 158 (N CRIMP)
SET OF NUT CRIMPING DIES N.14 PEP 158 (N CRIMP)
SET OF NUT CRIMPING DIES N.16 PEP 158 (N CRIMP)
SET OF NUT CRIMPING DIES N.16,5 PEP 158 (N CRIMP)
SET OF NUT CRIMPING DIES N.19 PEP 158 (N CRIMP)
SET OF NUT CRIMPING DIES N.22 PEP 158 (N CRIMP)
SET OF NUT CRIMPING DIES N.26 PEP 158 (N CRIMP)
SET OF NUT CRIMPING DIES N.30 PEP 158 (N CRIMP)
SET OF NUT CRIMPING DIES N.34 PEP 158 (N CRIMP)
SET OF NUT CRIMPING DIES N.39 PEP 158 (N CRIMP)
SET OF NUT CRIMPING DIES N.41 PEP 158 (N CRIMP)
SET OF NUT CRIMPING DIES N.45 PEP 158 (N CRIMP)
SET OF NUT CRIMPING DIES N.51 PEP 158 (N CRIMP)
SET OF NUT CRIMPING DIES N.57 PEP 158 (N CRIMP)
SET OF NUT CRIMPING DIES N.63 PEP 158 (N CRIMP)
SET OF NUT CRIMPING DIES N.69 PEP 158 (N CRIMP)
SET OF NUT CRIMPING DIES N.73 PEP 158 (N CRIMP)

DESCRIPTION	N°	CRIMP RANGE
DIE SET N. 4 - LENGTH 56 MM	4	04-05
DIE SET N. 6 - LENGTH 56 MM	6	06-08
DIE SET N. 7 - LENGTH 56 MM	7	07-08
DIE SET N. 8 - LENGTH 56 MM	8	08-09
DIE SET N. 9 - LENGTH 56 MM	9	09-10
DIE SET N. 10 - LENGTH 56 MM	10	10-12
DIE SET N. 12 - LENGTH 70 MM	12	12-15
DIE SET N. 14 - LENGTH 70 MM	14	14-15
DIE SET N. 15 - LENGTH 70 MM	15	15-18
DIE SET N. 16 - LENGTH 70 MM	16	16-18
DIE SET N. 17 - LENGTH 70 MM	17	17-18
DIE SET N. 18 - LENGTH 70 MM	18	18-21
DIE SET N. 20 - LENGTH 70 MM	20	20-21
DIE SET N. 21 - LENGTH 70 MM	21	21-24
DIE SET N. 22 - LENGTH 70 MM	22	22-24
DIE SET N. 24 - LENGTH 70 MM	24	24-27
DIE SET N. 27 - LENGTH 70 MM	27	27-30
DIE SET N. 30 - LENGTH 70 MM	30	30-33
DIE SET N. 33 - LENGTH 70 MM	33	33-36
DIE SET N. 36 - LENGTH 75 MM	36	36-39
DIE SET N. 39 - LENGTH 70 MM	39	39-42
DIE SET N. 42 - LENGTH 70 MM	42	42-45
DIE SET N. 45 - LENGTH 70 MM	45	45-48
DIE SET N. 48 - LENGTH 70 MM	48	48-51
DIE SET N. 51 - LENGTH 75 MM	51	51-57
KIT 9 DIE SETS MS200 (16 18 20 22 24 27 33 39 45)	-	-
KIT 11 DIE SETS MS200 (16 18 20 22 24 27 30 33 39 45 48)	-	-
KIT 14 DIE SETS MS200 (14 16 18 20 22 24 27 30 33 36 39 42 45 48)	-	-

DESCRIPTION	N°	CRIMP RANGE
DIE SET N. 4 - LENGTH 56 MM	4	04-05
DIE SET N. 6 - LENGTH 56 MM	6	06-08
DIE SET N. 7 - LENGTH 56 MM	7	07-08
DIE SET N. 8 - LENGTH 56 MM	8	08-09
DIE SET N. 10 - LENGTH 90 MM	10	10-12
DIE SET N. 12 - LENGTH 90 MM	12	12-15
DIE SET N. 14 - LENGTH 90 MM	14	14-15
DIE SET N. 15 - LENGTH 70 MM	15	15-18
DIE SET N. 16 - LENGTH 90 MM	16	16-18
DIE SET N. 17 - LENGTH 90 MM	17	17-18
DIE SET N. 18 - LENGTH 70 MM	18	18-21
DIE SET N. 20 - LENGTH 90 MM	20	20-21
DIE SET N. 21 - LENGTH 90 MM	21	21-24
DIE SET N. 22 - LENGTH 90 MM	22	22-27
DIE SET N. 24 - LENGTH 90 MM	24	24-27
DIE SET N. 27 - LENGTH 90 MM	27	27-30
DIE SET N. 30 - LENGTH 90 MM	30	30-33
DIE SET N. 33 - LENGTH 90 MM	33	33-36
DIE SET N. 36 - LENGTH 90 MM	36	36-39
DIE SET N. 39 - LENGTH 90 MM	39	39-42
DIE SET N. 42 - LENGTH 90 MM	42	42-45
DIE SET N. 45 - LENGTH 95 MM*	45	45-48
DIE SET N. 45 - LENGTH 100 MM	45	45-48
DIE SET N. 48 - LENGTH 100 MM	48	48-51
DIE SET N. 51 - LENGTH 100 MM	51	51-57
DIE SET N. 51 - LENGTH 110 MM*	51	51-57
DIE SET N. 54 - LENGTH 100 MM	54	54-57
DIE SET N. 57 - LENGTH 100 MM	57	57-62
DIE SET N. 57 - LENGTH 110 MM*	57	57-62
DIE SET N. 60 - LENGTH 100 MM	60	60-62
DIE SET N. 62 - LENGTH 110 MM	62	62-66
DIE SET N. 63 - LENGTH 125 MM	63	62-66
DIE SET N. 66 - LENGTH 100 MM	66	66-70
DIE SET N. 66 - LENGTH 125 MM*	66	66-70
DIE SET N. 70 - LENGTH 100 MM	70	70-72
DIE SET N. 70 - LENGTH 125 MM	70	70-72
DIE SET N. 73 - LENGTH 120 MM	73	73-76
DIE SET N. 76 - LENGTH 120 MM	76	76-86
DIE SET N. 80 - LENGTH 100 MM	80	80-86
DIE SET N. 86 - LENGTH 100-65 MM	86	86-90
DIE SET N. 90 - LENGTH 100 MM, REINFORCED PIN	90	90-95
DIE SET N. 95 - LENGTH 100 MM, REINFORCED PIN	95	95-105
DIE SET N. 99 - LENGTH 100 MM	99	99-109
DIE SET N. 112 - LENGTH 100 MM	112	112-117
DIE SET N. 117 - LENGTH 100 MM	117	117-122
DIE SET N. 122 - LENGTH 100 MM	122	122-127
KIT 21 DIE SETS MS320 (14 16 18 20 22 24 27 30 33 36 39 42 45 48 51 57 63 66 70 73 76)	-	-
KIT 21 DIE SETS MS320 (7 10 12 14 16 18 20 22 24 27 30 33 39 45 51 57 66 73 76 80 95)	-	-

MS 480

PG.49

DESCRIPTION	N°	CRIMP RANGE
DIE SET N. 4 - LENGTH 56 MM	4	04-05
DIE SET N. 6 - LENGTH 56 MM	6	06-08
DIE SET N. 7 - LENGTH 56 MM	7	07-08
DIE SET N. 8 - LENGTH 56 MM	8	08-09
DIE SET N. 10 - LENGTH 90 MM	10	10-12
DIE SET N. 12 - LENGTH 90 MM	12	12-15
DIE SET N. 14- LENGTH 90 MM	14	14-15
DIE SET N. 15 - LENGTH 90 MM	15	15-18
DIE SET N. 16 - LENGTH 90 MM	16	16-18
DIE SET N. 17 - LENGTH 90 MM	17	17-18
DIE SET N. 18 - LENGTH 90 MM	18	18-21
DIE SET N. 20 - LENGTH 90 MM	20	20-21
DIE SET N. 21 - LENGTH 90 MM	21	21-24
DIE SET N. 22 - LENGTH 90 MM	22	22-24
DIE SET N. 24 - LENGTH 90 MM	24	24-27
DIE SET N. 27 - LENGTH 90 MM	27	27-30
DIE SET N. 30 - LENGTH 90 MM*	30	30-33
DIE SET N. 30 - LENGTH 100 MM	30	30-33
DIE SET N. 33 - LENGTH 90 MM	33	33-36
DIE SET N. 36 - LENGTH 90 MM	36	36-39
DIE SET N. 39 - LENGTH 90 MM	39	39-42
DIE SET N. 42 - LENGTH 90 MM	42	42-45
DIE SET N. 45 - LENGTH 100 MM	45	45-48
DIE SET N. 48 - LENGTH 100 MM	48	48-51
DIE SET N. 51 - LENGTH 110 MM	51	51-57
DIE SET N. 54 - LENGTH 110 MM	54	54-57
DIE SET N. 57 - LENGTH 110 MM	57	57-62
DIE SET N. 60 - LENGTH 110 MM	60	60-62
DIE SET N. 62 - LENGTH 110 MM	62	62-66
DIE SET N. 62* - LENGTH 125 MM	62*	62-66
DIE SET N. 63 - LENGTH 125 MM	63	63-66
DIE SET N. 66 - LENGTH 110 MM	66	66-70
DIE SET N. 66* - LENGTH 125 MM	66*	66-70
DIE SET N. 70 - LENGTH 110 MM	70	70-72
DIE SET N. 70* - LENGTH 125 MM	70*	70-72
DIE SET N. 73 - LENGTH 125-28 MM, REINFORCED PIN	73	73-76
DIE SET N. 76 - LENGTH 135 MM	76	76-86
DIE SET N. 80 - LENGTH 125 MM	80	80-86
DIE SET N. 82 - LENGTH 135 MM	82	82-90
DIE SET N. 86 - LENGTH 125 MM	86	86-90
DIE SET N. 90 - LENGTH 125 MM	90	90-95
DIE SET N. 95- LENGTH 125 MM	95	95-105
DIE SET N. 99 - LENGTH 125 MM, REINFORCED PIN	99	99-105
DIE SET N. 105 - LENGTH 150 MM	105	105-112
DIE SET N. 112 - LENGTH 150 MM	112	112-122
DIE SET N. 117 - LENGTH 125 MM	117	117-122
DIE SET N. 122 - LENGTH 130 MM, REINFORCED PIN	122	122 -130
KIT 14 DIE SETS MS480 (16 18 20 22 24 27 30 33 39 45 51 57 66 73)	-	-
KIT 21 DIE SETS MS480 (14 16 18 20 22 24 27 30 33 36 39 42 45 48 51 57 63 66 70 73 76)	-	-

DESCRIPTION	N°	CRIMP RANGE
DIE SET N. 4 - LENGTH 56 MM	4	04-05
DIE SET N. 6 - LENGTH 56 MM	6	06-08
DIE SET N. 7 - LENGTH 56 MM	7	07-08
DIE SET N. 8 - LENGTH 56 MM	8	08-09
DIE SET N. 10 - LENGTH 56 MM	10	10-12
DIE SET N. 12 - LENGTH 90 MM	12	12-15
DIE SET N. 15 - LENGTH 90 MM	15	15-18
DIE SET N. 16 - LENGTH 90 MM	16	16-18
DIE SET N. 17 - LENGTH 90 MM	17	17-18
DIE SET N. 18 - LENGTH 90 MM	18	18-21
DIE SET N. 20 - LENGTH 90 MM	20	20-21
DIE SET N. 21 - LENGTH 90 MM	21	21-24
DIE SET N. 22 - LENGTH 90 MM	22	22-24
DIE SET N. 24 - LENGTH 90 MM	24	24-27
DIE SET N. 27 - LENGTH 90 MM	27	27-30
DIE SET N. 30 - LENGTH 90 MM	30	30-33
DIE SET N. 33 - LENGTH 90 MM	33	33-36
DIE SET N. 36 - LENGTH 90 MM	36	36-39
DIE SET N. 39 - LENGTH 90 MM	39	39-42
DIE SET N. 42 - LENGTH 90 MM	42	42-45
DIE SET N. 45 - LENGTH 100 MM	45	45-48
DIE SET N. 48 - LENGTH 100 MM	48	48-51
DIE SET N. 51 - LENGTH 110 MM	51	51-57
DIE SET N. 54 - LENGTH 110 MM	54	54-57
DIE SET N. 57 - LENGTH 110 MM	57	57-62
DIE SET N. 60 - LENGTH 110 MM	60	60-62
DIE SET N. 62 - LENGTH 110 MM	62	62-66
DIE SET N. 62* - LENGTH 125 MM	62*	62-66
DIE SET N. 63 - LENGTH 125 MM	63	63-66
DIE SET N. 66 - LENGTH 110 MM	66	66-70
DIE SET N. 66* - LENGTH 125 MM	66*	66-70
DIE SET N. 70 - LENGTH 110 MM	70	70-72
DIE SET N. 70* - LENGTH 125 MM	70*	70-72
DIE SET N. 73 - LENGTH 125-28 MM, REINFORCED PIN	73	73-76
DIE SET N. 76 - LENGTH 125 MM	76	76-86
DIE SET N. 76* - LENGTH 135 MM	76*	76-86
DIE SET N. 80 - LENGTH 125 MM	80	80-86
DIE SET N. 82 - LENGTH 135 MM	82	82-90
DIE SET N. 86 - LENGTH 150 MM	86	86-90
DIE SET N. 90 - LENGTH 125 MM	90	90-95
DIE SET N. 95 - LENGTH 150 MM	95	95-105
DIE SET N. 105 - LENGTH 180 MM	105	105-112
DIE SET N. 112 - LENGTH 150 MM	112	112-122
DIE SET N. 117 - LENGTH 125 MM	117	117-122
DIE SET N. 122 - LENGTH 130 MM	122	122-130
DIE SET N. 130 - LENGTH 180 MM	130	130-140
KIT 18 DIE SETS MS800 (39 42 45 48 51 57 63 66 70 73 76 82 86 90 95 105 112 130)	-	-

MS 320 OPEN HEAD

PG. 51

DESCRIPTION	N°	CRIMP RANGE
DIE SET N. 73 - LENGTH 125 MM	73	73-80
DIE SET N. 80 - LENGTH 125 MM	80	80-86
DIE SET N. 84 - LENGTH 125 MM	84	86-90
DIE SET N. 86 - LENGTH 125 MM	86	86-90
DIE SET N. 90 - LENGTH 125 MM	90	90-95
DIE SET N. 95 - LENGTH 125 MM	95	95-105
DIE SET N. 99 - LENGTH 125 MM	99	99-106
DIE SET N. 106 - LENGTH 125 MM	106	106-112
DIE SET N. 112 - LENGTH 125 MM	112	112-117
DIE SET N. 117 - LENGTH 125 MM	117	117-122
DIE SET N. 122 - LENGTH 125 MM	122	122-125
DIE SET N.125 - LENGTH 125 MM	125	125-128
DIE SET N. 128 - LENGTH 125 MM	128	128-130
DIE SET N. 130 - LENGTH 125 MM	130	130-140
DIE SET N. 135 - LENGTH 125 MM	135	135-145
DIE SET N. 150 - LENGTH 125 MM	150	150-160
DIE SET N. 156 - LENGTH 125 MM	156	156-166
DIE SET N. 158 - LENGTH 125 MM	158	158-168
DIE SET N. 165 - LENGTH 125 MM	165	165-185
DIE SET N. 175 - LENGTH 125 MM	175	175-195
DIE SET N. 181 - LENGTH 125 MM	181	181-201
DIE SET N. 185 - LENGTH 125 MM	185	185-205
DIE SET N. 188 - LENGTH 125 MM	188	188-208
DIE SET N. 190 - LENGTH 125 MM	190	190-210

DESCRIPTION	N°	CRIMP RANGE
DIE SET N. 4 - LENGTH 56 MM	4	04-05
DIE SET N. 6 - LENGTH 56 MM	6	06-08
DIE SET N. 7 - LENGTH 56 MM	7	07-08
DIE SET N. 8 - LENGTH 56 MM	8	08-09
DIE SET N. 10 - LENGTH 56 MM	10	10-12
DIE SET N. 12 - LENGTH 56 MM	12	12-15
DIE SET N. 15 - LENGTH 56 MM	15	15-18
DIE SET N. 17 - LENGTH 56 MM	17	17-18
DIE SET N. 18 - LENGTH 56MM	18	18-21
DIE SET N. 20 - LENGTH 56 MM	20	20-21
DIE SET N. 21 - LENGTH 56 MM	21	21-24
DIE SET N. 24 - LENGTH 70 MM	24	24-27
DIE SET N. 27 - LENGTH 90 MM	27	27-30
DIE SET N. 30 - LENGTH 90 MM	30	30-33
DIE SET N. 33 - LENGTH 90 MM	33	33-36
DIE SET N. 36 - LENGTH 90 MM	36	36-39
DIE SET N. 39 - LENGTH 90 MM	39	39-42
DIE SET N. 42 - LENGTH 90 MM	42	42-45
DIE SET N. 45 - LENGTH 100 MM	45	45-48
DIE SET N. 48 - LENGTH 100 MM	48	48-51
DIE SET N. 51 - LENGTH 110 MM	51	51-57
DIE SET N. 54 - LENGTH 110 MM	54	36-39
DIE SET N. 57 - LENGTH 110 MM	57	57-62
DIE SET N. 60 - LENGTH 110 MM	60	60-62
DIE SET N. 66 - LENGTH 125 MM	66	66-70
DIE SET N. 73 - LENGTH 125 MM	73	73-80
DIE SET N. 80 - LENGTH 125 MM	80	80-86
DIE SET N. 86 - LENGTH 125 MM	86	86-90
DIE SET N. 90 - LENGTH 125 MM	90	90-95
DIE SET N. 95 - LENGTH 125 MM	95	95-105
DIE SET N. 99 - LENGTH 125 MM	99	99-112
DIE SET N. 112 - LENGTH 125 MM	112	112-117
DIE SET N. 117 - LENGTH 125 MM	117	117-122
DIE SET N. 122 - LENGTH 125 MM	122	122-130
DIE SET N. 130 - LENGTH 150 MM	130	130-140
DIE SET N. 136 - LENGTH 150 MM	136	136-146
DIE SET N. 146 - LENGTH 150 MM	146	146-156
DIE SET N. 156 - LENGTH 150 MM	156	156-166
DIE SET N. 166 - LENGTH 150 MM	166	166-176
DIE SET N. 176 - LENGTH 150 MM	176	176-186
DIE SET N. 186 - LENGTH 150 MM	186	186-196
DIE SET N. 196 - LENGTH 150 MM	196	196-206

MS 450-200/P

PG. 53

DESCRIPTION	N°	CRIMP RANGE
DIE SET N. 4 - LENGTH 56 MM	4	04-05
DIE SET N. 6 - LENGTH 56 MM	6	06-08
DIE SET N. 7 - LENGTH 56 MM	7	07-08
DIE SET N. 8 - LENGTH 56 MM	8	08-09
DIE SET N. 10 - LENGTH 56 MM	10	10-12
DIE SET N. 12 - LENGTH 56 MM	12	12-15
DIE SET N. 14 - LENGTH 56 MM	14	14-15
DIE SET N. 15 - LENGTH 56 MM	15	15-18
DIE SET N. 16 - LENGTH 56 MM	16	16-18
DIE SET N. 17 - LENGTH 56 MM	17	17-18
DIE SET N. 18 - LENGTH 56 MM	18	18-21
DIE SET N. 20 - LENGTH 56 MM	20	20-21
DIE SET N. 21 - LENGTH 56 MM	21	21-24
DIE SET N. 22 - LENGTH 56 MM	22	22-24
DIE SET N. 24 - LENGTH 70 MM	24	24-27
DIE SET N. 27 - LENGTH 90 MM	27	27-30
DIE SET N. 30 - LENGTH 90 MM	30	30-33
DIE SET N. 33 - LENGTH 90 MM	33	33-36
DIE SET N. 36 - LENGTH 90 MM	36	36-39
DIE SET N. 39 - LENGTH 90 MM	39	39-42
DIE SET N. 42 - LENGTH 90 MM	42	42-45
DIE SET N. 45 - LENGTH 100 MM	45	45-48
DIE SET N. 48 - LENGTH 100 MM	48	48-51
DIE SET N. 51 - LENGTH 110 MM	51	51-57
DIE SET N. 54 - LENGTH 110 MM	54	54-57
DIE SET N. 57 - LENGTH 110 MM	57	57-62
DIE SET N. 60 - LENGTH 110 MM	60	60-62
DIE SET N. 62 - LENGTH 110 MM	62	62-66
DIE SET N. 62* - LENGTH 125 MM	62*	62-66
DIE SET N. 63 - LENGTH 125 MM	63	63-66
DIE SET N. 66 - LENGTH 110 MM	66	66-70
DIE SET N. 66* - LENGTH 125 MM	66*	66-70
DIE SET N. 70 - LENGTH 100 MM	70	70-72
DIE SET N. 70* - LENGTH 125 MM	70*	70-72
DIE SET N. 72 - LENGTH 125 MM	72	72-73
DIE SET N. 73 - LENGTH 125-28 MM, REINFORCED PIN	73	73-76
DIE SET N. 76 - LENGTH 125 MM	76	76-86
DIE SET N. 76* - LENGTH 135 MM	76*	76-86
DIE SET N. 80 - LENGTH 125 MM	80	80-82
DIE SET N. 82 - LENGTH 135 MM	82	82-90
DIE SET N. 86* - LENGTH 150 MM (FOR DIAMONDSPIR 2½")	86*	86-90
DIE SET N. 90 - LENGTH 125 MM	90	90-95
DIE SET N. 95 - LENGTH 150 MM (FOR DIAMONDSPIR 2½")	95*	95-105
DIE SET N. 99 - LENGTH 125 MM	99	95-105
DIE SET N. 105 - LENGTH 150 MM	105	99-109
DIE SET N. 112 - LENGTH 150 MM	112	112-122
DIE SET N. 117 - LENGTH 110 MM	117	117-127
DIE SET N. 122 - LENGTH 130 MM, REINFORCED PIN	122	122-130

MS 450 XL

PG. 54

DESCRIPTION	N°	CRIMP RANGE
DIE SET N. 73 - LENGTH 125 MM	73	73-80
DIE SET N. 80 - LENGTH 125 MM	80	80-86
DIE SET N. 86 - LENGTH 125 MM	86	86-90
DIE SET N. 90 - LENGTH 125 MM	90	90-95
DIE SET N. 95 - LENGTH 125 MM	95	95-105
DIE SET N. 99 - LENGTH 125 MM	99	99-112
DIE SET N. 112 - LENGTH 125 MM	112	112-117
DIE SET N. 117 - LENGTH 125 MM	117	117-122
DIE SET N. 122 - LENGTH 125 MM	122	122-130
DIE SET N. 130 - LENGTH 140 MM, REINFORCED PIN	130	130-150
DIE SET N. 169 - LENGTH 140 MM, REINFORCED PIN	169	169-189
DIE SET N. 182 - LENGTH 130 MM, REINFORCED PIN	182	182-202
DIE SET N. 240 - LENGTH 130 MM, REINFORCED PIN	240	240-260

XL CRIMP MS 550 / XL CRIMP 550-16

PG. 55

DESCRIPTION	N°	CRIMP RANGE
DIE SET N. 73 - LENGTH 125 MM	73	73-80
DIE SET N. 80 - LENGTH 125 MM	80	80-86
DIE SET N. 86 - LENGTH 125 MM	86	86-90
DIE SET N. 90 - LENGTH 125 MM	90	90-95
DIE SET N. 95 - LENGTH 125 MM	95	95-105
DIE SET N. 99 - LENGTH 125 MM	99	99-112
DIE SET N. 112 - LENGTH 125 MM	112	112-117
DIE SET N. 117 - LENGTH 125 MM	117	117-122
DIE SET N. 122 - LENGTH 125 MM	122	122-130
DIE SET N. 130 - LENGTH 200 MM	130	130-140
DIE SET N. 140 - LENGTH 200 MM	140	140-150
DIE SET N. 150 - LENGTH 200 MM	150	150-160
DIE SET N. 156 - LENGTH 200 MM	156	156-166
DIE SET N. 160 - LENGTH 200 MM	160	160-180
DIE SET N. 165 - LENGTH 200 MM	165	165-185
DIE SET N. 170 - LENGTH 200 MM	170	170-190
DIE SET N. 176 - LENGTH 200 MM	176	176-196
DIE SET N. 178 - LENGTH 200 MM	178	178-198
DIE SET N. 180 - LENGTH 200 MM	180	180-200
DIE SET N. 200 - LENGTH 200 MM	200	200-220
DIE SET N. 215 - LENGTH 200 MM	215	215-235
DIE SET N. 225 - LENGTH 200 MM	225	225-245
DIE SET N. 230 - LENGTH 200 MM	230	230-250
DIE SET N. 235 - LENGTH 200 MM	235	235-255
DIE SET N. 250 - LENGTH 200 MM	250	250-270
DIE SET N. 260 - LENGTH 200 MM	260	260-280
DIE SET N. 265 - LENGTH 200 MM	265	265-285
DIE SET N. 280 - LENGTH 200 MM	280	280-300
DIE SET N. 282 - LENGTH 200 MM	282	282-302
DIE SET N. 285 - LENGTH 200 MM	285	285-305
DIE SET N. 290 - LENGTH 200 MM	290	290-310
DIE SET N. 308 - LENGTH 200 MM	308	308-328
DIE SET N. 317 - LENGTH 200 MM	317	317-337
DIE SET N. 330 - LENGTH 200 MM	330	330-350
DIE SET N. 340 - LENGTH 200 MM	340	340-360

MACHINE	HOSE TYPE	FITTING TYPE	MAX HOSE SIZE
MHP 80 EVO	2 WIRE BRAID & TEXTILE	MF2000 MULTIFIT; MF3000 OPK; MF3000 OPF	1"
	3 WIRE (1 BRAID + 2 SPIRAL)	MF2000 MULTIFIT	½"
	4 WIRE SPIRALS	MF2000 MULTIFIT; MF3000 OPK	½"

MACHINE	HOSE TYPE	FITTING TYPE	MAX HOSE SIZE
MHP 110 EVO	2 WIRE BRAID & TEXTILE	MF2000 MULTIFIT; MF3000 OPK; MF3000 OPF	1"
	3 WIRE (1 BRAID + 2 SPIRAL)	MF2000 MULTIFIT	¾"
	4 WIRE SPIRALS	MF2000 MULTIFIT; MF3000 OPK	1"

MACHINE	HOSE TYPE	FITTING TYPE	MAX HOSE SIZE
MHP 137	2 WIRE BRAID & TEXTILE	MF2000 MULTIFIT; MF3000 OPK; MF3000 OPF	1 ¼"
	3 WIRE (1 BRAID + 2 SPIRAL)	MF2000 MULTIFIT	1 ¼"
	4 WIRE SPIRALS	MF2000 MULTIFIT; MF3000 OPK	1 ¼"
	3 WIRE (1 BRAID + 2 SPIRAL)	MF2000 INTERLOCK PLUS; MF2000 SPIRALFIT	¾"
	4 WIRE SPIRALS	MF2000 INTERLOCK PLUS; MF2000 SPIRALFIT	¾"

MACHINE	HOSE TYPE	FITTING TYPE	MAX HOSE SIZE
MRB 137 EVO R / MRB 137 EVO	2 WIRE BRAID & TEXTILE	MF2000 MULTIFIT; MF3000 OPK; MF3000 OPF	1 ¼"
	3 WIRE (1 BRAID + 2 SPIRAL)	MF2000 MULTIFIT	1 ¼"
	4 WIRE SPIRALS	MF2000 MULTIFIT; MF3000 OPK	1 ¼"
	3 WIRE (1 BRAID + 2 SPIRAL)	MF2000 INTERLOCK PLUS; MF2000 SPIRALFIT	¾"
	4 WIRE SPIRALS	MF2000 INTERLOCK PLUS; MF2000 SPIRALFIT	¾"

MACHINE	HOSE TYPE	FITTING TYPE	MAX HOSE SIZE
MB 240 EVO	2 WIRE BRAID & TEXTILE	MF2000 MULTIFIT; MF3000 OPK; MF3000 OPF	2"
	3 WIRE (1 BRAID + 2 SPIRAL)	MF2000 MULTIFIT; MF2000 INTERLOCK PLUS; MF2000 SPIRALFIT	1 ¼"
	4 WIRE SPIRALS	MF2000 MULTIFIT; MF3000 OPK	2"
	4 WIRE SPIRALS	MF2000 INTERLOCK PLUS; MF2000 SPIRALFIT	1 ¼"
	6 WIRE SPIRAL	MF2000 INTERLOCK PLUS;	1"

MACHINE	HOSE TYPE	FITTING TYPE	MAX HOSE SIZE
MB 350 EVO / MB 350 EVO - L	2 WIRE BRAID & TEXTILE	MF2000 MULTIFIT; MF3000 OPF; MF3000 OPK	3"
	3 WIRE (1 BRAID + 2 SPIRAL)	MF2000 MULTIFIT; MF2000 INTERLOCK PLUS; MF2000 SPIRALFIT	1 ¼"
	4 WIRE SPIRALS	MF2000 MULTIFIT; MF2000 INTERLOCK PLUS; MF2000 SPIRALFIT; MF3000 OPK	2"
	5 WIRE (4 SPIRAL + 1 BRAID)	MF2000 INTERLOCK PLUS	1 ¼"
	7 WIRE (6 SPIRAL + 1 BRAID)	MF2000 INTERLOCK SUPER	1 ¼"
	6 WIRE SPIRALS (350 BAR / 5000PSI)	MF2000 INTERLOCK PLUS; MF2000 SPIRALFIT	2"
	6 WIRE SPIRAL (420 BAR / 5000PSI)	MF2000 INTERLOCK PLUS; MF2000 INTERLOCK SUPER	1 ¼"
	8 WIRE SPIRALS	MF2000 INTERLOCK PLUS	1 ¼"

MACHINE	HOSE TYPE	FITTING TYPE	MAX HOSE SIZE
GOLDEN CRIMP 420 EVO	2 WIRE BRAID & TEXTILE	MF2000 MULTIFIT; MF3000 OPF; MF3000 OPK	4"
	3 WIRE (1 BRAID + 2 SPIRAL)	MF2000 MULTIFIT; MF2000 INTERLOCK PLUS; MF2000 SPIRALFIT	1 ¼"
	4 WIRE SPIRALS	MF2000 MULTIFIT; MF3000 OPK; MF2000 INTERLOCK PLUS; MF2000 SPIRALFIT;	3"
	5 WIRE (4 SPIRAL + 1 BRAID)	MF2000 INTERLOCK PLUS	1 ¼"
	7 WIRE (6 SPIRAL + 1 BRAID)	MF2000 INTERLOCK SUPER	1 ½"
	6 WIRE SPIRALS	MF2000 INTERLOCK SUPER; MF2000 SPIRALFIT-GX; MF2000 INTERLOCK PLUS; MF2000 SPIRALFIT	2"
	8 WIRE SPIRALS	MF2000 INTERLOCK PLUS	1 ½"

MACHINE	HOSE TYPE	FITTING TYPE	MAX HOSE SIZE
MV 137 L	2 WIRE BRAID & TEXTILE	MF2000 MULTIFIT; MF3000 OPF; MF3000 OPK	1 ¼"
	3 WIRE (1 BRAID + 2 SPIRAL)	MF2000 MULTIFIT	1 ¼"
	4 WIRE SPIRALS	MF2000 MULTIFIT; MF3000 OPK	1 ¼"
	3 WIRE (1 BRAID + 2 SPIRAL)	MF2000 INTERLOCK PLUS; MF2000 SPIRALFIT	¾"
	4 WIRE SPIRALS	MF2000 INTERLOCK PLUS; MF2000 SPIRALFIT	¾"

MACHINE	HOSE TYPE	FITTING TYPE	MAX HOSE SIZE
MV 240 / 240 L	2 WIRE BRAID & TEXTILE	MF2000 MULTIFIT; MF3000 OPK; MF3000 OPF	2"
	3 WIRE (1 BRAID + 2 SPIRAL)	MF2000 MULTIFIT; MF2000 INTERLOCK PLUS; MF2000 SPIRALFIT	1 ¼"
	4 WIRE SPIRALS	MF2000 MULTIFIT; MF3000 OPK	2"
	4 WIRE SPIRALS	MF2000 INTERLOCK PLUS; MF2000 SPIRALFIT	1 ¼"
	6 WIRE SPIRAL	MF2000 INTERLOCK PLUS;	1"

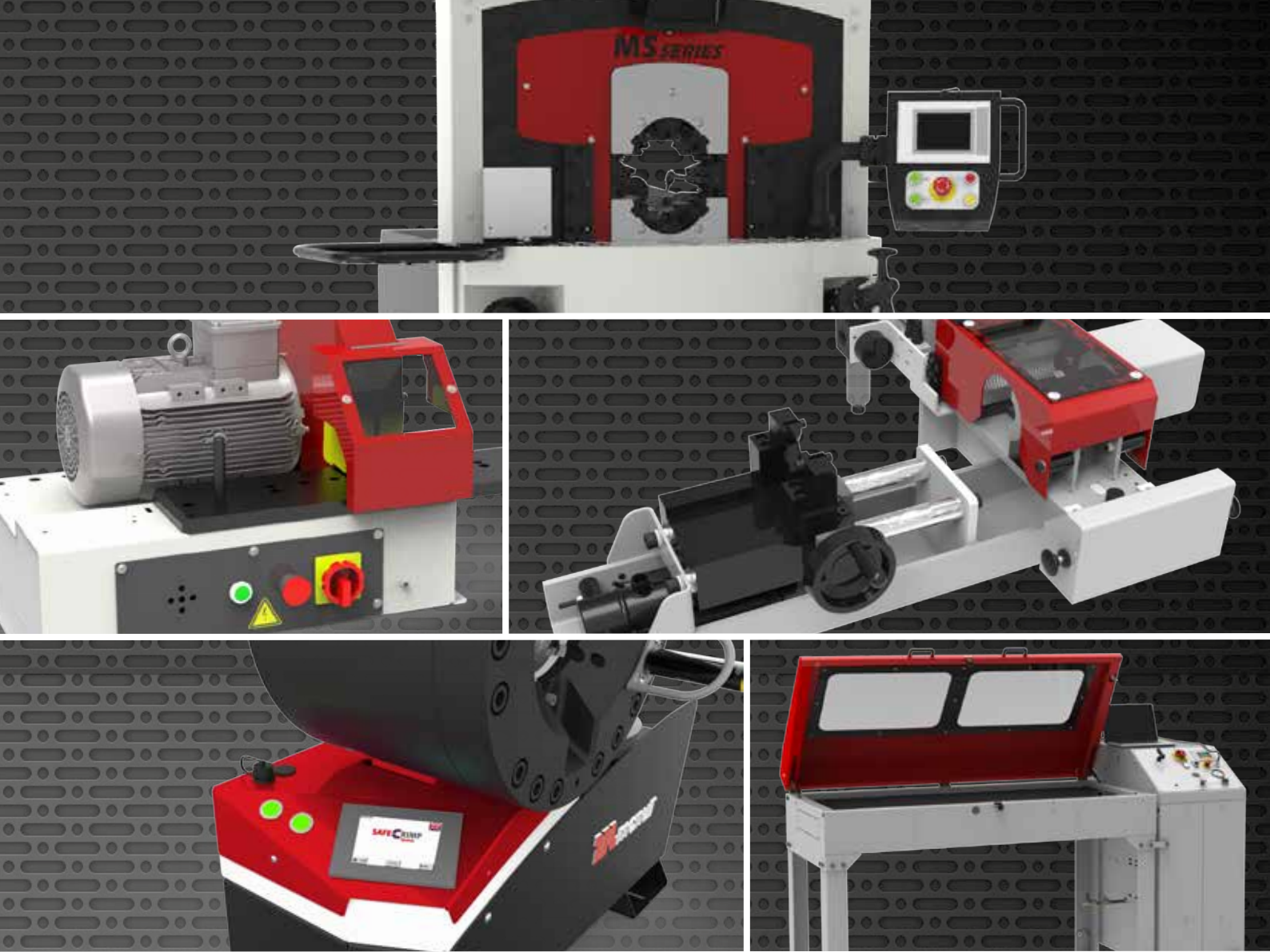
MACHINE	HOSE TYPE	FITTING TYPE	MAX HOSE SIZE
MV 350	2 WIRE BRAID & TEXTILE	MF2000 MULTIFIT; MF3000 OPF; MF3000 OPK	3"
	3 WIRE (1 BRAID + 2 SPIRAL)	MF2000 MULTIFIT; MF2000 INTERLOCK PLUS; MF2000 SPIRALFIT	1 ¼"
	4 WIRE SPIRALS	MF2000 MULTIFIT; MF2000 INTERLOCK PLUS; MF2000 SPIRALFIT; MF3000 OPK	2"
	5 WIRE (4 SPIRAL + 1 BRAID)	MF2000 INTERLOCK PLUS	1 ¼"
	7 WIRE (6 SPIRAL + 1 BRAID)	MF2000 INTERLOCK SUPER	1 ½"
	6 WIRE SPIRAL	MF2000 INTERLOCK PLUS; MF2000 INTERLOCK SUPER; MF2000 SPIRALFIT	1 ½"

MACHINE	HOSE TYPE	FITTING TYPE	MAX HOSE SIZE
MS 140	2 WIRE BRAID & TEXTILE	MF2000 MULTIFIT; MF3000 OPF; MF3000 OPK	1 ¼"
	3 WIRE (1 BRAID + 2 SPIRAL)	MF2000 MULTIFIT;	1 ¼"
	4 WIRE SPIRALS	MF2000 MULTIFIT; MF3000 OPK	1 ¼"
	3 WIRE (1 BRAID + 2 SPIRAL)	MF2000 INTERLOCK PLUS; MF2000 SPIRALFIT	1"
	4 WIRE SPIRALS	MF2000 INTERLOCK PLUS; MF2000 SPIRALFIT	1"

MACHINE	HOSE TYPE	FITTING TYPE	MAX HOSE SIZE
MS 320	2 WIRE BRAID & TEXTILE	MF2000 MULTIFIT; MF3000 OPF; MF3000 OPK	3"
	3 WIRE (1 BRAID + 2 SPIRAL)	MF2000 MULTIFIT; MF2000 INTERLOCK PLUS; MF2000 SPIRALFIT	1 ¼"
	4 WIRE SPIRALS	MF2000 MULTIFIT; MF2000 INTERLOCK PLUS; MF2000 SPIRALFIT; MF3000 OPK	2"
	5 WIRE (4 SPIRAL + 1 BRAID)	MF2000 INTERLOCK PLUS	1 ¼"
	7 WIRE (6 SPIRAL + 1 BRAID)	MF2000 INTERLOCK SUPER	1 ½"
	6 WIRE SPIRALS (ROCKMASTER/13 - GOLDENISO/35 XTRAFLEX - SHIELDMASTER/35 - DIAMONDSPIR)	MF2000 INTERLOCK PLUS; MF2000 SPIRALFIT	2"
	8 WIRE SPIRALS	MF2000 INTERLOCK PLUS	1 ¼"

MACHINE	HOSE TYPE	FITTING TYPE	MAX HOSE SIZE
MS 480	2 WIRE BRAID & TEXTILE	MF2000 MULTIFIT; MF3000 OPF; MF3000 OPK	4"
	3 WIRE (1 BRAID + 2 SPIRAL)	MF2000 MULTIFIT; MF2000 INTERLOCK PLUS; MF2000 SPIRALFIT;	1 ¼"
	4 WIRE SPIRALS	MF2000 MULTIFIT; MF2000 INTERLOCK PLUS; MF2000 SPIRALFIT; MF3000 OPK	4"
	5 WIRE (4 SPIRAL + 1 BRAID)	MF2000 INTERLOCK PLUS	1 ¼"
	7 WIRE (6 SPIRAL + 1 BRAID)	MF2000 INTERLOCK SUPER	1 ½"
	7 WIRE (6 SPIRAL + 1 BRAID)	MF2000 INTERLOCK PLUS	2"
	6 WIRE SPIRALS	MF2000 INTERLOCK PLUS; MF2000 SPIRALFIT	3"
	6 WIRE SPIRALS	MF2000 INTERLOCK SUPER; MF2000 SPIRALFIT-GX	2"
	6 WIRE SPIRALS	MF2000 INTERLOCK SUPER	1 ½"

MACHINE	HOSE TYPE	FITTING TYPE	MAX HOSE SIZE
MS 800	INDUSTRIAL TEXTILE HOSES	VARIOUS	8"
	2 WIRE BRAID & TEXTILE	MF2000 MULTIFIT; MF3000 OPF; MF3000 OPK;	4"
	3 WIRE (1 BRAID + 2 SPIRAL)	MF2000 MULTIFIT; MF2000 INTERLOCK PLUS; MF2000 SPIRALFIT;	1 ¼"
	4 WIRE SPIRALS	MF2000 MULTIFIT; MF2000 INTERLOCK PLUS; MF2000 SPIRALFIT; MF3000 OPK	4"
	5 WIRE (4 SPIRAL + 1 BRAID)	MF2000 INTERLOCK PLUS	1 ¼"
	7 WIRE (6 SPIRAL + 1 BRAID)	MF2000 INTERLOCK SUPER	3"
	6/8 WIRE SPIRALS	MF2000 INTERLOCK PLUS; MF2000 SPIRALFIT; MF2000 INTERLOCK SUPER	3"



SCAN HERE FOR
CONTACT INFORMATION

 **manuli**[®]
HYDRAULICS

www.manuli-hydraulics.com