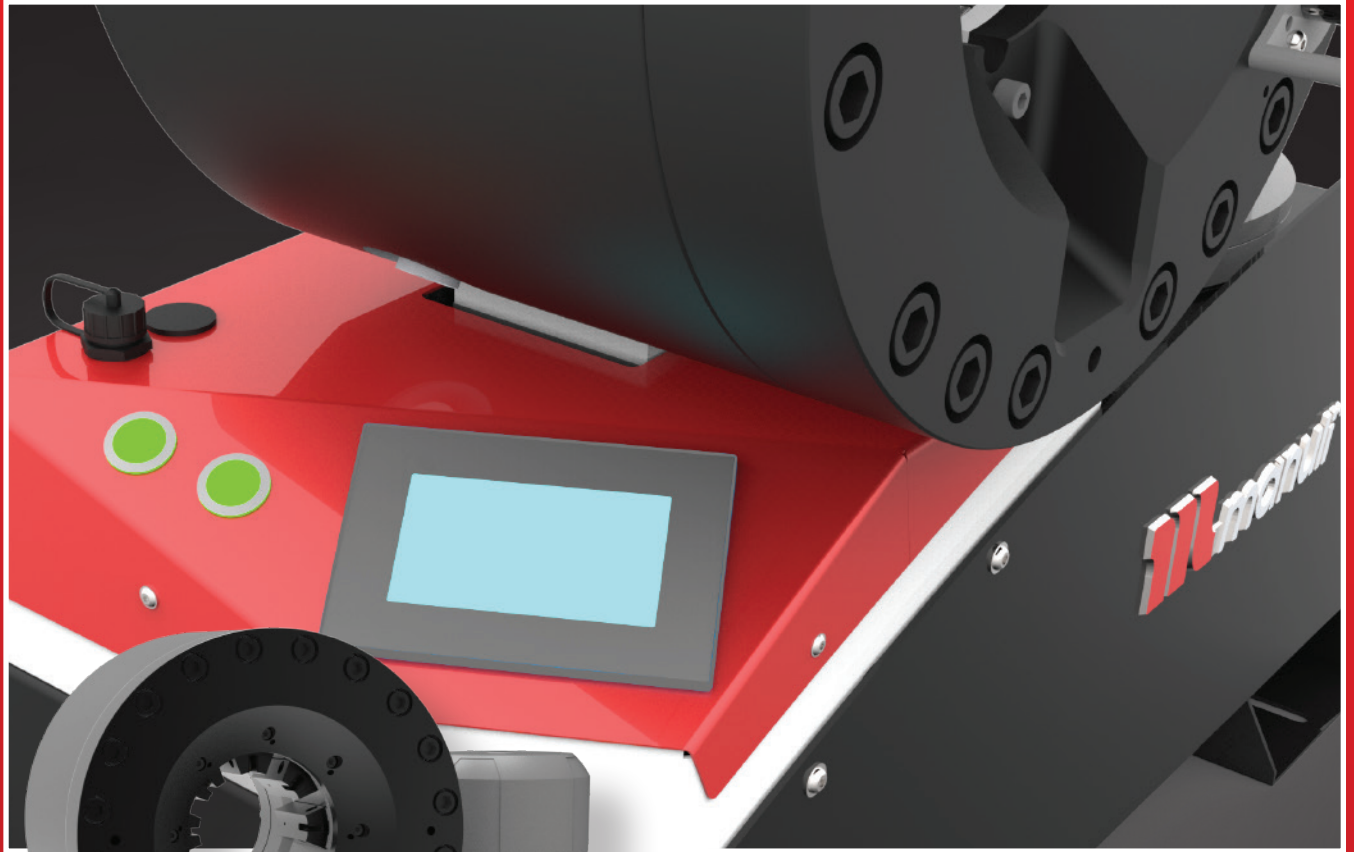


CRIMPING MACHINES



**Manuli Crimper
Range**

EVO RANGE OF CRIMPING MACHINES

Manuli Equipment assembly machines are part of an integrated product range, designed to ensure users get the best results and maximum benefits from their Manuli hoses and fittings. The latest evolution of this range are the new EVO crimping machines.

Manuli Hydraulics is always on the lookout for ways to improve both the efficiency and the quality of new and existing production operations.

As a market leader in assembly machines, we wanted to offer new crimping machines to improve the operator's comfort, giving more flexibility when assembling hoses. This led to the creation of the new EVO crimping machines.

These machines combine the robustness required for harsh environments with the reliability needed for busy workshops. Their compact and ergonomic design, along with the ease of set up and maintenance, make them suitable for a variety of applications.

This extensive range is highly adaptable, with various options available allowing users to customise their machine according to their specific needs.



- Extensive range for both industrial and hydraulic hoses.
- 137, 240, 350 and 420 tonnes variants.
- From 3/16 up to 4" hose diameter.
- 3 kW, 4 kW and 5,5 kW motor for 1 Ph/3Ph.



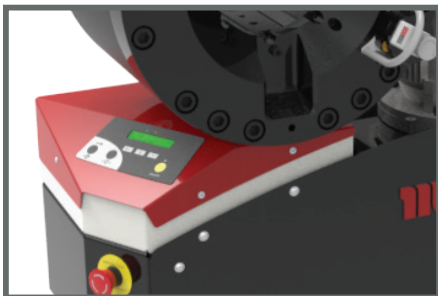
- SC panel - Smart Control panel. Daily counter. Semi-automatic opening.
- SCE panel - electronic micrometer with the ability to save up to 75 configurations.
- Caliper connected and numerical display of the crimping range on SCE and SCS.
- SCS panel - Safe Crimp System.



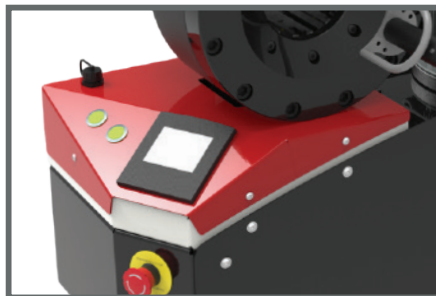
- Compact and ergonomic design.
- Easy set up.
- Various options available depending on our customers' needs and workshops.



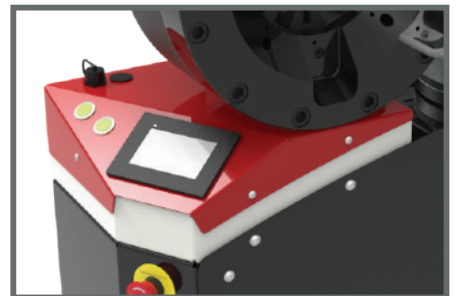
- Robust.
- Ease of maintenance (foam pads and dust collector).
- Compatibility with all tensions (different frequencies).



SC Panel



SCE Panel



SCS Panel

Disclaimer: We reserve the right to modify or discontinue any product and/or related service described in this documentation without notice. No product is warranted as being fit for a particular purpose and we do not assume any liability in connection with the use of our products other than those technically approved by us for specific products. This document supersedes all previous versions and previously issued documentation.

For more information, please contact us at via our dedicated Contact Form:

www.manuli-hydraulics.com/contact-us/

MHP 80 EVO

FIELD SERVICE & MOBILE WORKSHOP HAND PUMP



KEY FEATURES:

- Compact
- Lightweight
- Easy to use
- Balanced design
- Dual stage pump

TECHNICAL SPECIFICATIONS:

Dimensions:	360 x 270 x 390 mm (14 x 11 x 15")
Net Weight:	26 kg (57 lb)
Gross Weight:	39 kg (86 lb)
Capacity*:	2wb: 1" max. 4ws: 1/2" max.
Crimp Range:	6 - 43 mm (0.236 - 1.693")
Crimp Force:	80 t

Opening with Dies:	+20 mm (+0.787")
Complete Opening:	59 mm (2.323")
Master Die Length:	56 mm (2.205")
Standard Dies:	16, 18, 20, 22, 24, 27, 30**
Technical Features:	Hand pump: 5000 psi (double speed)
Packaging:	800 x 600 x 830 mm (31 x 24 x 33")

*Indicative capacities depending on hose and fitting type.

** Master-dies used as dies set N°39.

HOSE & FITTINGS SELECTION:

HOSE TYPE	FITTING TYPE	MAX. HOSE SIZE
2 WIRE BRAID & TEXTILE	MF2000 MULTIFIT; MF3000 OPK; MF3000 OPF	1"
3 WIRE (1 BRAID + 2 SPIRAL)	MF2000 MULTIFIT	1/2"
4 WIRE SPIRAL	MF2000 MULTIFIT; MF3000 OPK	1/2"

OPTIONAL:



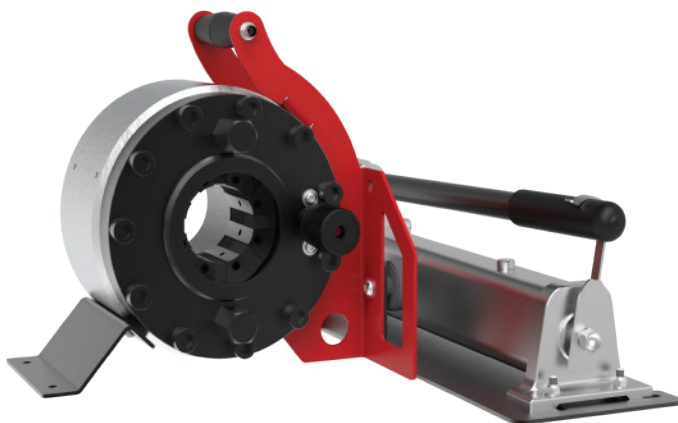
Maintenance Kits



Hydro-Pneumatic
Pump

MHP 110 EVO

FIELD SERVICE & MOBILE WORKSHOP HAND PUMP



KEY FEATURES:

- Flexible
- Portable
- Robust (protected narrow head)
- Multi-positioning (with removable plate)

TECHNICAL SPECIFICATIONS:

Dimensions:	289 x 237 x 270 mm (11 x 9 x 10")
Net Weight:	29 kg (63 lb)
Weight (Head only):	21 kg (46 lb)
Capacity*:	2wb: 1" max. 4ws: 1" max.
Crimp Range:	6 - 43 mm (0.236 - 1.693")
Crimp Force:	110 t

Opening with Dies:	+20 mm (+0.787")
Complete Opening:	59 mm (2.323")
Master Die Length:	60 mm (2.362")
Standard Dies:	16, 18, 20, 22, 24, 27, 30, 39**
Packaging:	800 x 600 x 830 mm (31 x 24 x 33")

*Indicative capacities depending on hose and fitting type.

** Master-dies used as dies set N°39.

HOSE & FITTINGS SELECTION:

HOSE TYPE	FITTING TYPE	MAX. HOSE SIZE
2 WIRE BRAID & TEXTILE	MF2000 MULTIFIT; MF3000 OPK; MF3000 OPF	1"
3 WIRE (1 BRAID + 2 SPIRAL)	MF2000 MULTIFIT	¾"
4 WIRE SPIRAL	MF2000 MULTIFIT; MF3000 OPK	1"

OPTIONAL:



Maintenance Kits



Hydro-Pneumatic Pump

OTHER VERSIONS AVAILABLE:



Head Only Version



Magnet Version

MRB 70 EVO R

MAINTENANCE WORKSHOP VERTICAL BENCHTOP



KEY FEATURES:

- Ergonomically positioned adjustable head
- Axis of the head situated perpendicular to the operator
- Compact

TECHNICAL SPECIFICATIONS:

Dimensions:	360 x 530 x 620 mm (14 x 21 x 25")
Net Weight:	58 kg (128 lb)
Gross Weight:	71 kg (156 lb)
Capacity*:	2wb: 1" max. 4ws: ¾" max.
Crimp Range:	6 - 43 mm (0.236 - 1.693")
Crimp Force:	70 t
Opening with Dies:	+20 mm (+0.787")

Complete Opening:	59 mm (2.323")
Master Die Length:	60 mm (2.362")
Standard Dies:	06, 08, 10, 12, 15, 18, 21, 24, 27, 30
Voltages:	220/240 V, 1Ph, 50 Hz e380/415V, 3Ph + N, 50Hz Others voltages available on request
Noise Level:	<70 bB A
Motor:	2.2 kW

*Indicative capacities depending on hose and fitting type.

OPTIONAL:



Maintenance Kits

MRB 137 EVO R

MAINTENANCE WORKSHOP VERTICAL BENCHTOP



KEY FEATURES:

- Ergonomically positioned adjustable head
- Axis of the head situated perpendicular to the operator
- Compact

TECHNICAL SPECIFICATIONS:

Dimensions: 360 x 530 x 620 mm
(14 x 21 x 25")

Net Weight: 85 kg (187 lb)

Gross Weight: 89 kg (196 lb)

Capacity*: 2wb / 4ws: 1"¼ max.
Industrial: 1"½ max.

Crimp Range: 4 - 70 mm (0.157 - 2.756")

Crimp Force: 137 t

Opening with Dies: +28 mm (+1.102")

Complete Opening: 108 mm (4.252")

Master Die Length: 75 mm (2.953")

Standard Dies: 14, 16, 18, 20, 22, 24, 27, 30, 33, 36, 39,
42, 45, 48, 51

Voltages: 110 V, 1Ph, 60 Hz
220/240 V, 1 Ph, 50 Hz
380/415V, 3 Ph + N, 50 Hz
+12/24V

Noise Level: <70 dB A

Motor: 1.5 kW (110V)
2.2 kW (230V)

*Indicative capacities depending on hose and fitting type.

HOSE & FITTINGS SELECTION:

HOSE TYPE	FITTING TYPE	MAX. HOSE SIZE
2 WIRE BRAID & TEXTILE	MF2000 MULTIFIT; MF3000 OPK; MF3000 OPF	1 ¼"
3 WIRE (1 BRAID + 2 SPIRAL)	MF2000 MULTIFIT	1 ¼"
4 WIRE SPIRAL	MF2000 MULTIFIT; MF3000 OPK	1 ¼"
3 WIRE (1 BRAID + 2 SPIRAL)	MF2000 INTERLOCK PLUS; MF2000 SPIRALFIT	¾"
4 WIRE SPIRAL	MF2000 INTERLOCK PLUS; MF2000 SPIRALFIT	¾"

OPTIONAL:



Maintenance Kits



Hydro-Pneumatic
Pump



Die Storage Panel



Aluminium Quick
Change Gun



Die Storage Panel
EVO R

MB 137 EVO

ASSEMBLING FOR FIELD REPAIR BENCHTOP CRIMP MACHINE



KEY FEATURES:

- Crimp force of up to 137 tonnes for hoses up to 1"¼
- Easy to use and robust
- Extensive range of dies to suit crimping of hydraulic hoses
- Easy set up and maintenance
- Fast and reliable
- Digital micrometer
- Model shown equipped with SC control panel

TECHNICAL SPECIFICATIONS:

Dimensions:	765 x 400 x 650 mm (30 x 16 x 26")
Net Weight:	160 kg (353 lb)
Capacity*:	2wb / 4ws: 1"¼ max. Industrial: 1"½ max.
Crimp Range:	4 - 70 mm (0.157 - 2.756")
Crimp Force:	137 t
Opening with Dies:	+28 mm (+1.102")
Complete Opening:	108 mm (4.252")

Master Die Length:	75 mm (2.953")
Standard Dies:	14, 16, 18, 20, 22, 24, 27, 30, 33, 36, 39, 42, 45, 48, 51
Voltages:	220/240 V, 1Ph, 50/60 Hz 220/240 V, 3Ph, 50 Hz 380/415 V, 3Ph, 50 Hz 208/240 V, 3Ph, 60 Hz Other voltages available on request
Noise Level:	<70 bB A
Motor:	4.0 kW

*Indicative capacities depending on hose and fitting type.

OPTIONAL:



Maintenance Kits



Die Storage Panel



Die Storage Table



Die Storage Table
EVO



Electrical Footswitch



Aluminium Quick
Change Gun



Digital Caliper



Die Sets for Brake & Air
Conditioning Hoses



Marking Dies



Die Storage Panel
EVO

MB 240 EVO

PROFESSIONAL WORKSHOP BENCHTOP



KEY FEATURES:

- Crimp force of up to 240 tonnes for hoses up to 2"
- Easy to use and robust
- Radial die movement
- High crimping force
- Extensive range of dies to suit crimping of hydraulic hoses
- Easy set up and maintenance
- Fast and reliable
- Model shown equipped with SCE control panel

TECHNICAL SPECIFICATIONS:

Dimensions:	765 x 400 x 650 mm (30 x 16 x 26")
Net Weight:	165 kg (364 lb)
Capacity*:	2wb: 2" max. 4ws: 2" max. 6ws: 1 1/2" max.
Crimp Range:	4 - 76 mm (0.157 - 2.992")
Crimp Force:	240 t
Opening with Dies:	+38 mm (+1.496")
Complete Opening:	118 mm (4.645")

Master Die Length:	100 mm (3.937")
Standard Dies:	14, 16, 18, 20, 22, 24, 27, 30, 33, 36, 39, 42, 45, 48, 51, 57, 63, 66, 70
Voltages:	220/240 V, 1Ph, 50/60 Hz 220/240 V, 3Ph, 50 Hz 380/415 V, 3Ph, 50 Hz 208/240 V, 3Ph, 60 Hz Other voltages available on request
Noise Level:	<70 dB A
Motor:	4.0 kW

*Indicative capacities depending on hose and fitting type.

HOSE & FITTINGS SELECTION:

HOSE TYPE	FITTING TYPE	MAX. HOSE SIZE
2 WIRE BRAID & TEXTILE	MF2000 MULTIFIT; MF3000 OPK; MF3000 OPF	2"
3 WIRE (1 BRAID + 2 SPIRAL)	MF2000 MULTIFIT; MF2000 INTERLOCK PLUS; MF2000 SPIRALFIT	1 1/4"
4 WIRE SPIRAL	MF2000 MULTIFIT; MF3000 OPK	2"
4 WIRE SPIRAL	MF2000 INTERLOCK PLUS; MF2000 SPIRALFIT	1 1/4"
6 WIRE SPIRAL	MF2000 INTERLOCK PLUS;	1"

OPTIONAL:



Maintenance Kits



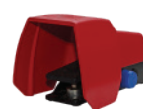
Die Storage Panel



Die Storage Table



Die Storage Table EVO



Electrical Footswitch



Aluminium Quick Change Gun



Digital Caliper



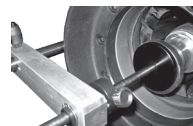
Die Sets for Brake & Air Conditioning Hoses



Marking Dies



Die Storage Panel EVO



Mechanical Backstop

MB 350 EVO - L

FULL SERVICE WORKSHOP BENCHTOP; VERY HIGH CRIMP FORCE



KEY FEATURES:

- Crimp force up to 350 tonnes for hoses up to 3"
- Easy to use and robust
- Automatic maintenance alerts
- Groove for 90° long drop fittings
- Also available as S CRIMP 350 L with 4.0 kW motor
- Model shown equipped with SCS control panel

TECHNICAL SPECIFICATIONS:

Dimensions: 765 x 400 x 750 mm
(30 x 16 x 30")

Net Weight: 262 kg (578 lb)

Capacity*: 2wb: 3" max.
Industrial: 4" max.
4ws: 2" max.
6ws: 2" max.

Crimp Range: 4 - 130 mm (0.157 - 5.118")

Crimp Force: 350 t

Opening with Dies: +54 mm (+2.125")

Complete Opening: 180 mm (7.086")

Master Die Length: 115 mm (4.523")

Standard Dies: 14, 16, 18, 20, 22, 24, 27, 30, 33, 36, 39, 42, 45, 48, 51, 57, 63, 66, 70, 73, 76

Voltages: 220/240 V, 3Ph, 50 Hz
380/415 V, 3Ph, 50 Hz
208/240 V, 3Ph, 60 Hz
380/415 V, 3Ph, 60 Hz

Noise Level: <70 dB A

Motor: 5.5 kW / 4 kW

*Indicative capacities depending on hose and fitting type.

HOSE & FITTINGS SELECTION:

HOSE TYPE	FITTING TYPE	MAX. HOSE SIZE
2 WIRE BRAID & TEXTILE	MF2000 MULTIFIT; MF3000 OPF; MF3000 OPK	3"
3 WIRE (1 BRAID + 2 SPIRAL)	MF2000 MULTIFIT; MF2000 INTERLOCK PLUS; MF2000 SPIRALFIT	1 ¼"
4 WIRE SPIRAL	MF2000 MULTIFIT; MF2000 INTERLOCK PLUS; MF2000 SPIRALFIT; MF3000 OPK	2"
5 WIRE (4 SPIRAL + 1 BRAID)	MF2000 INTERLOCK PLUS	1 ¼"
7 WIRE (6 SPIRAL + 1 BRAID)	MF2000 INTERLOCK SUPER	1 ¼"
6 WIRE SPIRAL (350 BAR / 5000psi)	MF2000 INTERLOCK PLUS; MF2000 SPIRALFIT	2"
6 WIRE SPIRAL (420 BAR / 5000psi)	MF2000 INTERLOCK PLUS; MF2000 INTERLOCK SUPER	1 ¼"
8 WIRE SPIRAL	MF2000 INTERLOCK PLUS	1 ¼"

OPTIONAL:



Maintenance Kits



Die Storage Panel



Die Storage Table



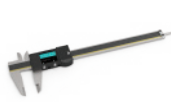
Die Storage Table EVO



Electrical Footswitch



Aluminium Quick Change Gun



Digital Caliper



Die Sets for Brake & Air Conditioning Hoses



Marking Dies



Die Storage Panel EVO



Mechanical Backstop

GOLDENCRIMP 420 EVO

ASSEMBLING FOR FIELD REPAIR BENCHTOP CRIMPING MACHINE



KEY FEATURES:

- High crimping force of 420 tonnes
- Robust design for transport and operation in harsh environments
- Protected cylinders for trouble-free operation in high dust environments
- Large opening suitable for large bore hoses
- Easy maintenance due to dust collector foam pads
- Model shown equipped with SC control panel

TECHNICAL SPECIFICATIONS:

Dimensions: 765 x 500 x 800 mm
(30 x 20 x 32")

Net Weight: 395 kg (871 lb)

Capacity*: 6ws: 3" max.
Industrial: 4" max.

Crimp Range: 4 - 130 mm (0.157 - 5.118")

Crimp Force: 420 t

Opening with Dies: +48 mm (+1.9 inch)

Complete Opening: 178 mm (7.0 inch)

Master Die Length: 120 mm (4.724 inch)

Standard Dies: 14, 16, 18, 20, 22, 24, 27, 30, 33, 36, 39,
42, 45, 48, 51, 57, 63, 66, 70, 73, 76

Voltages: 220/240 V, 3Ph, 50 Hz
380/415 V, 3Ph, 50 Hz
208/240 V, 3Ph, 60 Hz
380/415 V, 3Ph, 60 Hz

Noise Level: <70 bB A

Motor: 5.5 kW

Packaging: 745 x 1150 x 945 mm
(29 x 45 x 37")

*Indicative capacities depending on hose and fitting type.

HOSE & FITTINGS SELECTION:

HOSE TYPE	FITTING TYPE	MAX. HOSE SIZE
2 WIRE BRAID & TEXTILE	MF2000 MULTIFIT; MF3000 OPF; MF3000 OPK	4"
3 WIRE (1 BRAID + 2 SPIRAL)	MF2000 MULTIFIT; MF2000 INTERLOCK PLUS; MF2000 SPIRALFIT	1 ¼"
4 WIRE SPIRAL	MF2000 MULTIFIT; MF3000 OPK; MF2000 INTERLOCK PLUS; MF2000 SPIRALFIT;	3"
5 WIRE (4 SPIRAL + 1 BRAID)	MF2000 INTERLOCK PLUS	1 ¼"
7 WIRE (6 SPIRAL + 1 BRAID)	MF2000 INTERLOCK SUPER	1 ½"
6 WIRE SPIRAL	MF2000 INTERLOCK SUPER; MF2000 SPIRALFIT-GX; MF2000 INTERLOCK PLUS; MF2000 SPIRALFIT	2"
8 WIRE SPIRAL	MF2000 INTERLOCK PLUS	1 ½"

OPTIONAL:



Maintenance Kits



Die Storage Panel



Die Storage Table



Die Storage Table
EVO



Electrical Footswitch



Aluminium Quick
Change Gun



Digital Caliper



Die Sets for Brake & Air
Conditioning Hoses



Marking Dies



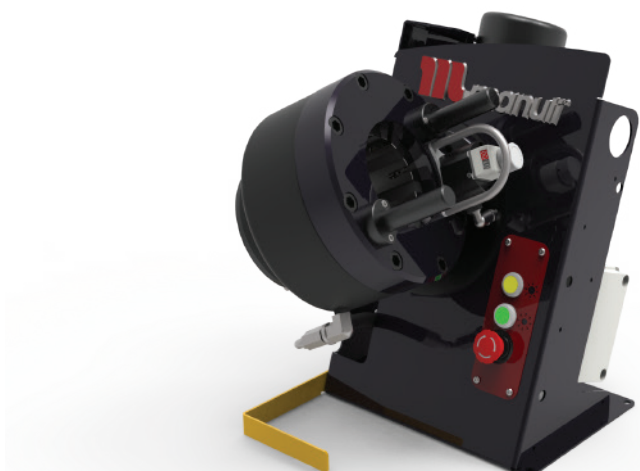
Die Storage Panel
EVO



Mechanical Backstop

MRV 137 EVO R

FIELD SERVICE & MOBILE WORKSHOP MOBILE VAN



KEY FEATURES:

- Swivel head for an ergonomic position
- Head axis perpendicular to the operator
- Compact and lightweight

TECHNICAL SPECIFICATIONS:

Dimensions:	392 x 398 x 486 mm (15 x 16 x 19")
Net Weight:	73 kg (161 lb)
Gross Weight:	90 kg (199 lb)
Capacity*:	2wb / 4ws: 1 1/4" max. Industrial: 1 1/2" max.
Crimp Range:	4 - 70 mm (0.157 - 2.756")
Crimp Force:	137 t
Opening with Dies:	+28 mm (+1.102")
Complete Opening:	108 mm (4.252")

*Indicative capacities depending on hose and fitting type.

Master Die Length:	75 mm (2.952")
Standard Dies:	14, 16, 18, 20, 22, 24, 27, 30, 33, 36, 39, 42, 45, 48, 51
Voltages:	12 V 24 V
Noise Level:	<72 dB A
Motor:	2.0 kW
Packaging:	800 x 600 x 830 mm (31 x 24 x 33")

OPTIONAL:



Maintenance Kits



Battery



Aluminium Quick Change Gun



Hydro-Pneumatic Pump



Marking Dies



Die Sets for Brake & Air Conditioning Hoses



Front Die Storage



Die Storage Panel EVO R

MV 240 / 240 L

FIELD SERVICE & MOBILE WORKSHOP MOBILE VAN



KEY FEATURES:

- Robust design
- Ergonomic micrometer
- High crimping speed
- Radial movement of the dies
- Cylinder protection
- Remote head mounting option possible

TECHNICAL SPECIFICATIONS:

Dimensions:	650 x 550 x 670 mm 320 x 360 x 350 mm**
Net Weight:	118 kg / 130 kg**
Gross Weight:	180 kg / 180 kg**
Capacity*:	2wb: 2" max. 4ws: 2" max. 6ws: 1" 1/4 max.
Crimp Range:	4 - 76 mm (0.157 - 2.992")
Crimp Force:	240 t
Opening with Dies:	+38 mm (+1.496")
Complete Opening:	118 mm (4.646")

Master Die Length:	100 mm (3.937")
Standard Dies:	14, 16, 18, 20, 22, 24, 27, 30, 33, 36, 39, 42, 45, 48, 51, 57, 63, 66, 70
Voltages:	12 / 24 V 220/240 V, 3Ph, 50 Hz 380/415 V, 3Ph, 50 Hz 208/240 V, 3Ph, 60 Hz
Noise Level:	72 dB A
Motor:	2.0 kW
Packaging:	800 x 600 x 830 mm
Dimensions of Power Pack:	440 x 320 x 320 mm**

*Indicative capacities depending on hose and fitting type.

** L Version.

HOSE & FITTINGS SELECTION:

HOSE TYPE	FITTING TYPE	MAX. HOSE SIZE
2 WIRE BRAID & TEXTILE	MF2000 MULTIFIT; MF3000 OPK; MF3000 OPF	2"
3 WIRE (1 BRAID + 2 SPIRAL)	MF2000 MULTIFIT; MF2000 INTERLOCK PLUS; MF2000 SPIRALFIT	1 1/4"
4 WIRE SPIRAL	MF2000 MULTIFIT; MF3000 OPK	2"
4 WIRE SPIRAL	MF2000 INTERLOCK PLUS; MF2000 SPIRALFIT	1 1/4"
6 WIRE SPIRAL	MF2000 INTERLOCK PLUS;	1"

OPTIONAL:



Maintenance Kits



Battery



Aluminium Quick Change Gun



Hydro-Pneumatic Pump



Marking Dies



Die Sets for Brake & Air Conditioning Hoses



Front Die Storage



Die Storage Panel EVO R

MS 140

ASSEMBLING FOR MASS PRODUCTION STAND TYPE CRIMP MACHINE



KEY FEATURES:

- Safe Crimp System (SCS) control
- Large production capacity (small/medium bore)
- Low noise level
- Precise
- Robust
- Available with SCE control panel

TECHNICAL SPECIFICATIONS:

Dimensions: 890 x 690 x 1380 mm
(35 x 27 x 54")

Net Weight: 600 kg (1323 lb)

Capacity*: 2wb: 2" max.
4ws: 1" 1/4 max.
Industrial: 2"1/2 max.

Crimp Range: 4 - 70 mm (0.157 - 2.756")

Crimp Force: 140 t

Opening with Dies: +45 mm (+1.772")

Complete Opening: 125 mm (4.921")

Master Die Length: 80 mm (3.150")

Standard Dies: 14, 16, 18, 20, 22, 24, 27, 30, 33, 36, 39,
42, 45, 48

Voltages: 220/240 V, 3Ph, 50 Hz
380/415 V, 3Ph, 50 Hz
208/240 V, 3Ph, 60 Hz

Noise Level: <65 dB A

Motor: 4 kW

Packaging: 1120 x 1020 x 1725 mm
(44 x 40 x 68")

*Indicative capacities depending on hose and fitting type.

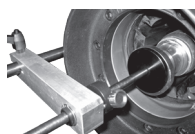
HOSE & FITTINGS SELECTION:

HOSE TYPE	FITTING TYPE	MAX. HOSE SIZE
2 WIRE BRAID & TEXTILE	MF2000 MULTIFIT; MF3000 OPf; MF3000 OPk	1 1/4"
3 WIRE (1 BRAID + 2 SPIRAL)	MF2000 MULTIFIT;	1 1/4"
4 WIRE SPIRAL	MF2000 MULTIFIT; MF3000 OPK	1 1/4"
3 WIRE (1 braid + 2 spiral)	MF2000 INTERLOCK PLUS; MF2000 SPIRALFIT	1"
4 WIRE SPIRAL	MF2000 INTERLOCK PLUS; MF2000 SPIRALFIT	1"

OPTIONAL:



Barcode Reader



Mechanical Backstop



Digital Caliper

MS 450 XL

8" HOSE CRIMPER



KEY FEATURES:

- High crimping force
- Large opening for hoses up to 8" and flanges up to ANSI 150 PSI
- Diameter adjustment is controlled by SCS
- Possibility to install eccentric and/or deported dies

TECHNICAL SPECIFICATIONS:

Capacity*:	Industrial: 8"
Max Crimping Diameter:	300 mm (11.811") (with special dies)
Crimp Force:	450 t
Opening with Dies:	+ 130 mm (5.118")

*Indicative capacities depending on hose and fitting type.

Complete Opening:	360 mm (14.173")
Maximum Die Length:	130 mm (5.118")
Gross Weight:	2900 kg (6393 lb)
Technical Features:	Die sizes available upon request.

OPTIONAL:



Die Storage Panel



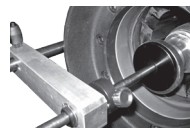
Marking Dies



Back View Camera



Digital Caliper



Mechanical Backstop



Side Table



Die Sets for Brake & Air
Conditioning Hoses



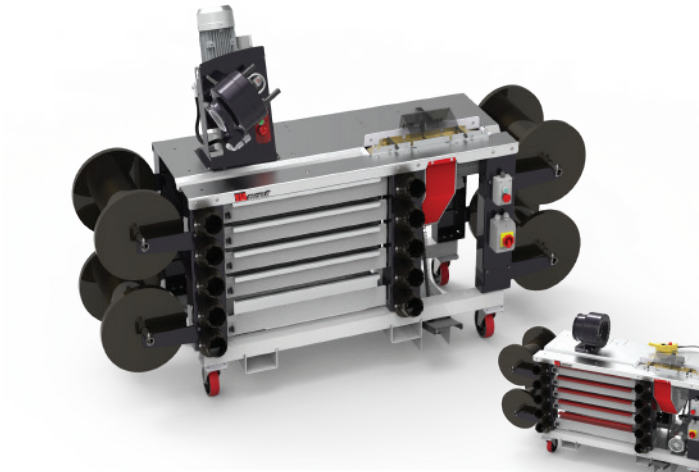
Electrical Footswitch



Barcode Reader

MOBILE WORKSHOP

ON-SITE REPAIR 2-IN-1 MOBILE SOLUTION



Version for hoses 2" Max.

KEY FEATURES:

- Mobile solution
- 2-in-1 cutting and crimping
- Rotative head
- Integrated cutting machine
- Scalloped blade for efficient cuts
- Built-in pedal and dust collector
- Storage for hoses, fittings and dies

TECHNICAL SPECIFICATIONS - VERSION 1" 1/4:

Dimensions:	2520 x 900 x 1670 mm (99 x 35 x 66")	Standard Dies:	14, 16, 18, 20, 22, 24, 27, 30, 33, 36, 39, 42, 45, 48, 51
Machine Weight:	382 kg (842 lb)	Voltages:	220/240 V-1 Ph-50 Hz 220/240 V-1 Ph-60 Hz 380/415 V-3 Ph + N-50 Hz
Capacity*:	4ws: 1" 1/4 max.	Motor:	2.2 kW (crimping machine) 3 kW (stand type cutting machine)
Crimp Force:	137 t		
Opening with Dies:	+28 mm (+1.102")		
Complete Opening:	108 mm (4.252")		
Master Die Length:	75 mm (2.953")		

TECHNICAL SPECIFICATIONS - VERSION 2":

Dimensions:	2487 x 810 x 1370 mm (98 x 32 x 54")	Standard Dies:	14, 16, 18, 20, 22, 24, 27, 30, 33, 36, 39, 42, 45, 48, 51, 57, 63, 66, 70
Machine Weight:	433 kg (955 lb)	Voltages:	220/240 V-1 Ph-50 Hz 220/240 V-1 Ph-60 Hz 380/415 V-3 Ph + N-50 Hz
Capacity*:	4ws: 2" max.	Motor:	2.2 kW (crimping machine) 3 kW (stand type cutting machine)
Crimp Force:	240 t		
Opening with Dies:	+38 mm (1.496")		
Complete Opening:	118 mm (4.646")		
Master Die Length:	100 mm (3.937")		

*Indicative capacities depending on hose and fitting type.

OPTIONAL:



Aluminium Quick
Change Gun



www.manuli-hydraulics.com