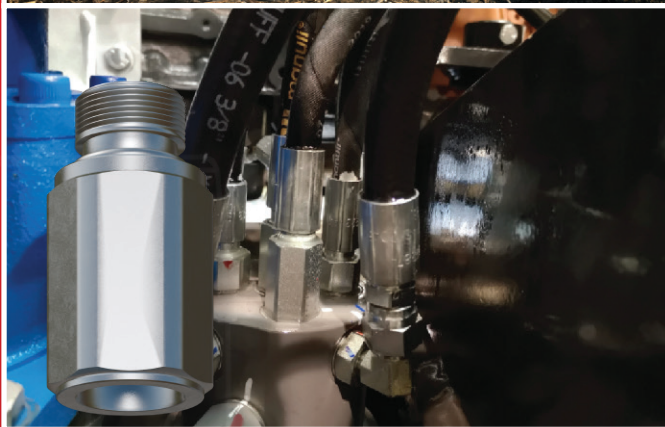
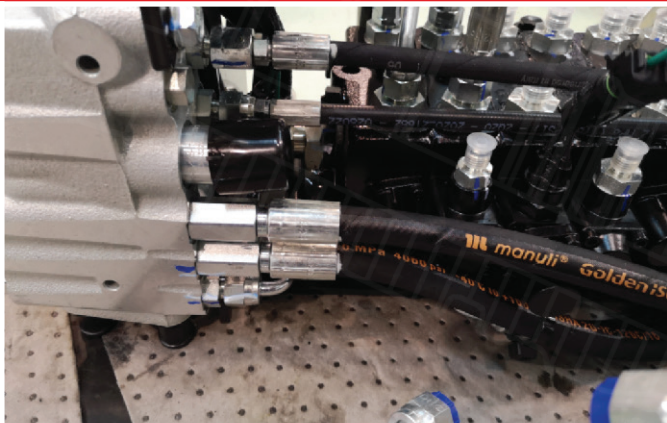
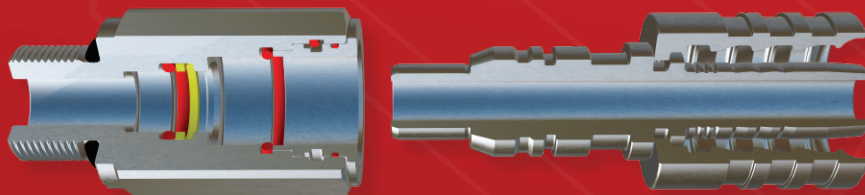


DISCONNECTABLE FASTFIT



DISCONNECTABLE threadless fitting solution suitable for high pressure lines.



DISCONNECTABLE FASTFIT PUSH-TO-CONNECT



The Manuli Hydraulics Disconnectable Fastfit connections are compact, robust, and reliable. Not only do threadless connections make installation easy with the push-to-connect functionality, but they are also suitable for installations in valve blocks with a restricted space.

The outer compact hexagon makes these connections easy to mount without the requirement of a key in restricted spaces.

WHY CHOOSE DISCONNECTABLE FASTFIT?

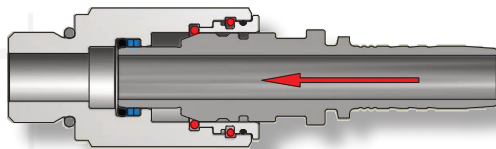
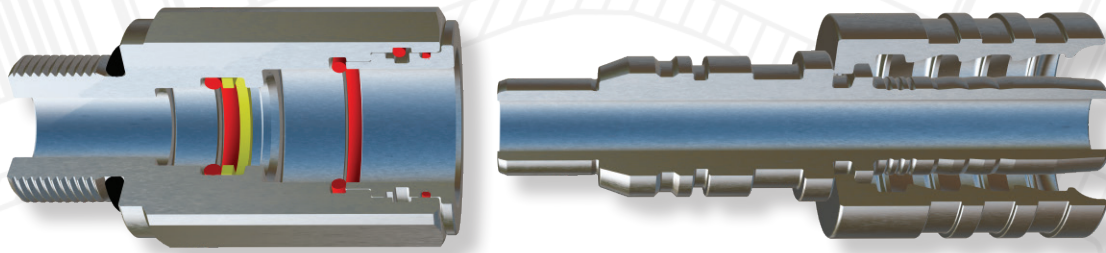
These connections have substantial time and cost savings including:

- Increased OEM line productivity
- Improved product quality
- No need of re-tightening
- No need for additional installation tools

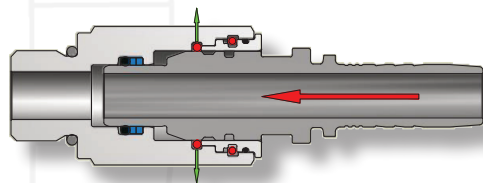
FEATURES & BENEFITS:

- **Easy Connection:** Push-to-connect design with manual push and pull actions.
- **Dedicated Disconnection Tool:** Disconnect with dedicated and proper tool by unlocking male insert. This tool is available in 3 variations to cover all sizes.
- **Compact:** Outer hexagon dimension to suit the difficult installations in restricted spaces (valve blocks).
- **High Grade:** Manufactured in high grade carbon steel.
- **Reduced Downtime:** Reduced assembly time even in hard-to-reach areas.
- **Corrosion Resistant:** E-Coat 1000 plating is the optimum solution for applications in severe environments and for demanding OEM specifications. It also offers even longer durability in standard hydraulic applications.
- **High Robustness:** High temperature of 121°C and high working pressure of 420 bar.

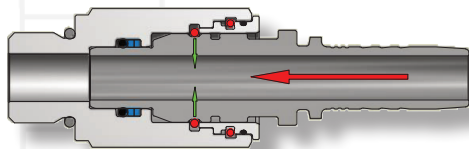
CONNECTION METHOD



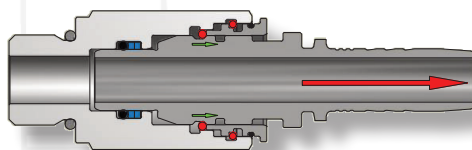
The male fitting is pushed into the female fitting where it engages with the O-ring and the backup seals correctly locate the parts.



As the male fitting is pushed further into the female fitting the chamfered edge forces the split locking pin apart.



When the male fitting is fully inserted the locking ring snaps to its original size as it locates itself in the groove of the male.



When pressurized the male and female parts try to separate. This drags the locking ring into a smaller diameter section of the ferrule, preventing the locking ring from expanding and ensures a secure connection.

Disclaimer: We reserve the right to modify or discontinue any product and/or related service described in this documentation without notice. No product is warranted as being fit for a particular purpose and we do not assume any liability in connection with the use of our products other than those technically approved by us for specific products. This document supersedes all previous versions and previously issued documentation.

INSERTS

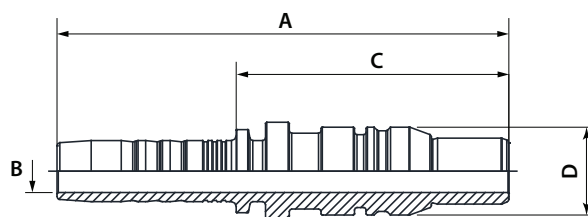
- **Material:** Adaptor and insert in steel, with some hardened areas in correspondence to the most stressed points. Seals in VITON. Other materials on request.
- **Working Temperature:** -13°F to +250°F (-25°C to + 121°C).
- **Safety Factor:** 4:1 for dynamic pressures.
- **Impulse Pressures:** 500,000 cycles at 120% of the rated one (freq. 1Hz).
- **Test Specifications:** ISO 19879.

SIZE			WORKING PRESSURE	
DN	Dash	Inch	MPa	PSI
10	-06	3/8"	42,0	6090
12	-08	1/2"	42,0	6090
16	-10	5/8"	42,0	6090
19	-12	3/4"	42,0	6090

MULTIFIT INSERT

M14H10

FAST-FIT STRAIGHT MALE INSERT

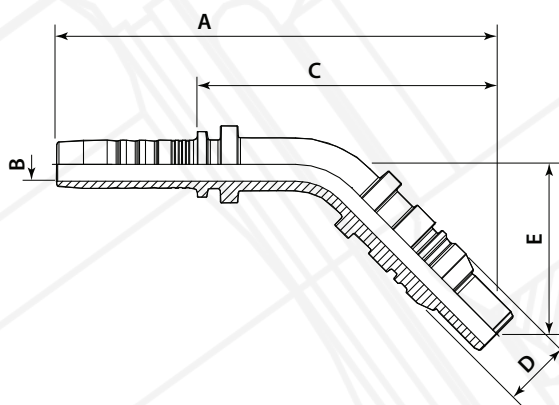


DN	Dash	inch	PART REF.	DN	Dash	inch	MPa	A	B	C	D
10	-06	3/8"	M14H10-04-06	6	-04	1/4"	42	71.7	4.0	44.2	14.4
10	-06	3/8"	M14H10-06-06	10	-06	3/8"	42	74.1	7.0	44.7	14.4
12	-08	1/2"	M14H10-06-08	10	-06	3/8"	42	77.8	7.0	48.4	18.7
12	-08	1/2"	M14H10-08-08	12	-08	1/2"	42	79.9	9.3	48.8	18.7
16	-10	5/8"	M14H10-10-10	16	-10	5/8"	38	89.2	12.5	54.9	22.7
19	-12	3/4"	M14H10-12-12	19	-12	3/4"	38	96.4	15.0	59.9	25.7

MULTIFIT INSERT

M14H40

FAST-FIT 45° ELBOW MALE INSERT

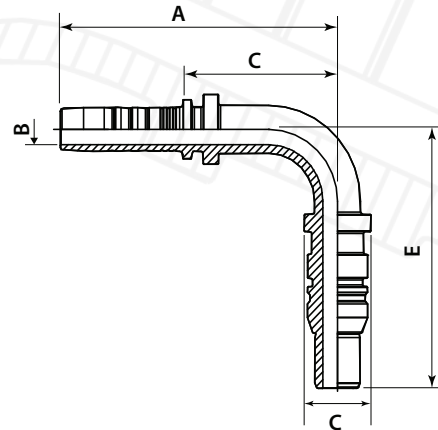


SIZE			PART REF.	HOSE BORE			W.P.	DIMENSIONS (mm)				
DN	Dash	inch		DN	Dash	inch	MPa	A	B	C	D	E
10	-06	3/8"	M14H40-04-06	6	-04	1/4"	42	83.8	4.0	56.3	14.4	33.2
10	-06	3/8"	M14H40-06-06	10	-06	3/8"	42	92.0	7.0	62.6	14.4	35.2
12	-08	1/2"	M14H40-06-08	10	-06	3/8"	42	97.4	7.0	68.0	18.7	40.6
12	-08	1/2"	M14H40-08-08	12	-08	1/2"	42	102.5	9.3	71.4	18.7	39.9
19	-12	3/4"	M14H40-12-12	19	-12	3/4"	38	132.4	15.0	95.9	25.7	52.7

MULTIFIT INSERT

M14H90

FAST-FIT 90° ELBOW MALE INSERT

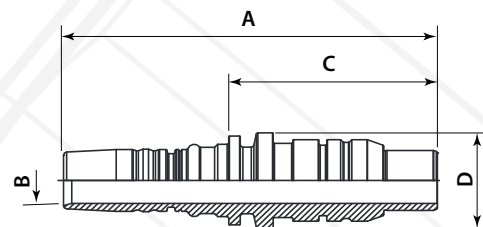


SIZE			PART REF.	HOSE BORE			W.P.	DIMENSIONS (mm)				
DN	Dash	inch		DN	Dash	inch		A	B	C	D	E
10	-06	3/8"	M14H90-04-06	6	-04	1/4"	42	57.6	4.0	30.1	14.4	54.0
10	-06	3/8"	M14H90-06-06	10	-06	3/8"	42	66.4	7.0	37.0	14.4	59.5
12	-08	1/2"	M14H90-06-08	10	-06	3/8"	42	66.4	7.0	37.0	18.7	67.1
12	-08	1/2"	M14H90-08-08	12	-08	1/2"	42	74.9	9.3	43.8	18.7	68.7
19	-12	3/4"	M14H90-12-12	19	-12	3/4"	38	99.0	15.0	62.5	25.7	93.9

INTERLOCK PLUS INSERT

M34H10

FAST-FIT STRAIGHT MALE INSERT



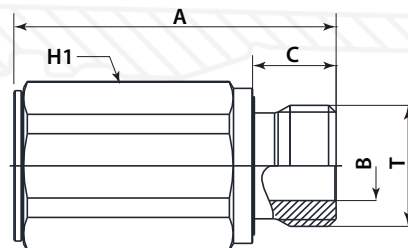
SIZE			PART REF.	HOSE BORE			W.P.	DIMENSIONS (mm)			
DN	Dash	inch		DN	Dash	inch		A	B	C	D
19	-12	3/4"	M34H10-12-12	19	-12	3/4"	42	113.6	14.5	63.4	25.7

ADAPTORS

ADAPTOR

A52014H

BSP MALE TYPE E TO ISO 1179-2

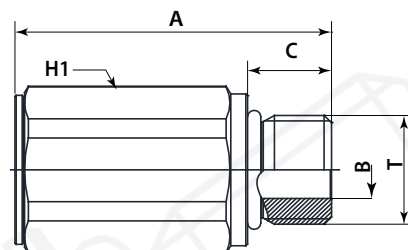


SIZE			PART REF.	THREAD	W.P.	DIMENSIONS (mm)			
DN	Dash	inch		T	MPa	A	B	C	D
10	-06	3/8"	A52014H-04-06	1/4"-19	42	50.9	5.0	12.0	22
10	-06	3/8"	A52014H-06-06	3/8"-19	42	50.4	8.0	12.0	22
12	-08	1/2"	A52014H-08-08	1/2"-14	40	54.0	12.0	14.0	27
19	-12	3/4"	A52014H-12-12	3/4"-14	40	67.5	16.0	16.0	36

ADAPTOR

A52324H

SAE MALE OR BOSS TYPE TO
SAE J1926-2



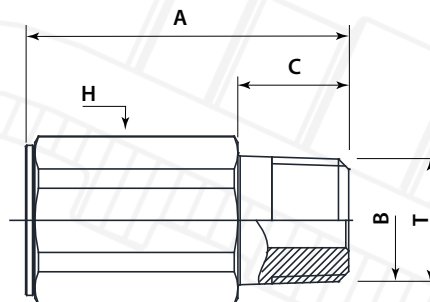
SIZE			PART REF.	THREAD	W.P.	DIMENSIONS (mm)			
DN	Dash	inch		T	MPa	A	B	C	D
10	-06	3/8"	A52324H-04-06	7/16"-20	42	48.1	4.5	11.0	22
10	-06	3/8"	A52324H-06-06	9/16"-18	42	48.3	7.5	12.0	22
12	-08	1/2"	A52324H-08-08	3/4"-16	42	52.8	10.0	14.0	27
16	-10	5/8"	A52324H-10-10	7/8"-14	42	62.1	12.5	16.0	32
19	-12	3/4"	A52324H-12-12	1.1/16"-12	42	68.0	15.5	18.5	36

ADAPTORS

ADAPTOR

A52284H

STRAIGHT ADAPTOR NPTF MALE TO
ASME B1.20.3

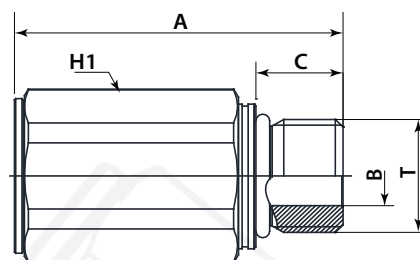


SIZE			PART REF.	THREAD	W.P.	DIMENSIONS (mm)			
DN	Dash	inch				A	B	C	D
10	-06	3/8"	A52284H-04-06	1/4"-18	42	50.6	6.0	14.5	22
10	-06	3/8"	A52284H-06-06	3/8"-18	42	49.6	8.0	14.5	22
12	-08	1/2"	A52284H-08-08	1/2"-14	42	57.0	9.5	19.2	27
19	-12	3/4"	A52284H-12-12	3/4"-14	42	69.0	15.0	19.2	36

ADAPTOR

A52194H

STRAIGHT ADAPTOR METRIC
MALE ISO 6149-2



SIZE			PART REF.	THREAD	W.P.	DIMENSIONS (mm)			
DN	Dash	inch				A	B	C	D
10	-06	3/8"	A52194H-14-06	M14x1.5	42	47.4	6.0	11.0	22
10	-06	3/8"	A52194H-18-06	M18x1.5	42	49.4	8.0	14.0	24
12	-08	1/2"	A52194H-22-08	M22x1.5	42	52.0	12.0	15.0	27
19	-12	3/4"	A52194H-27-12	M27x2	42	68.0	15.0	18.5	36

FASTFIT DISCONNECTABLE

LEVER



PART REF.	DESCRIPTION
O84HL0-06R04	FASTFIT DISCONNECT LEVER 1/4-3/8
O84HL0-10R08	FASTFIT DISCONNECT LEVER 1/2-5/8
O84HL0-12	FASTFIT DISCONNECT LEVER 3/4



www.manuli-hydraulics.com