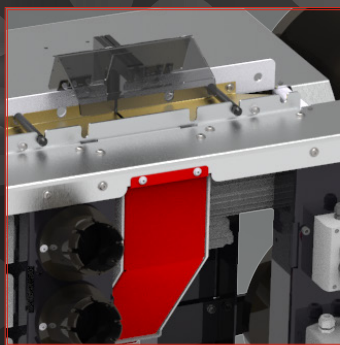
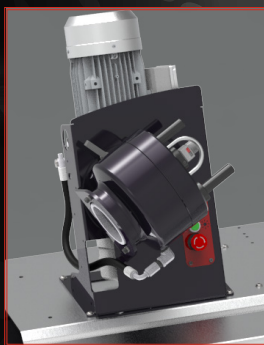


The “hose room on wheels” is a new concept from Manuli Hydraulics which combines the ability to cut and crimp hoses with a smart, convenient storage solution for both hoses and fittings. Designed as a comprehensive mobile solution, the “hose room on wheels” allows on-site maintenance users to bring their workshop with them without the need to retro-fit a van as a mobile workshop. Alternatively, for those users with limited workshop space, the “hose room on wheels” can be moved to a convenient working location when required, and then pushed up against a wall or into a corner to free up space when not needed.

## MRB 137 EVO R



Designed for hoses up to 1 1/4”, this version of the “hose room on wheels” combines the precision and efficiency of the M 30 CUT L cutting machine with the convenience and ergonomic design of the MRB 137 EVO R crimping machine, for a versatile and reliable mobile assembly solution.



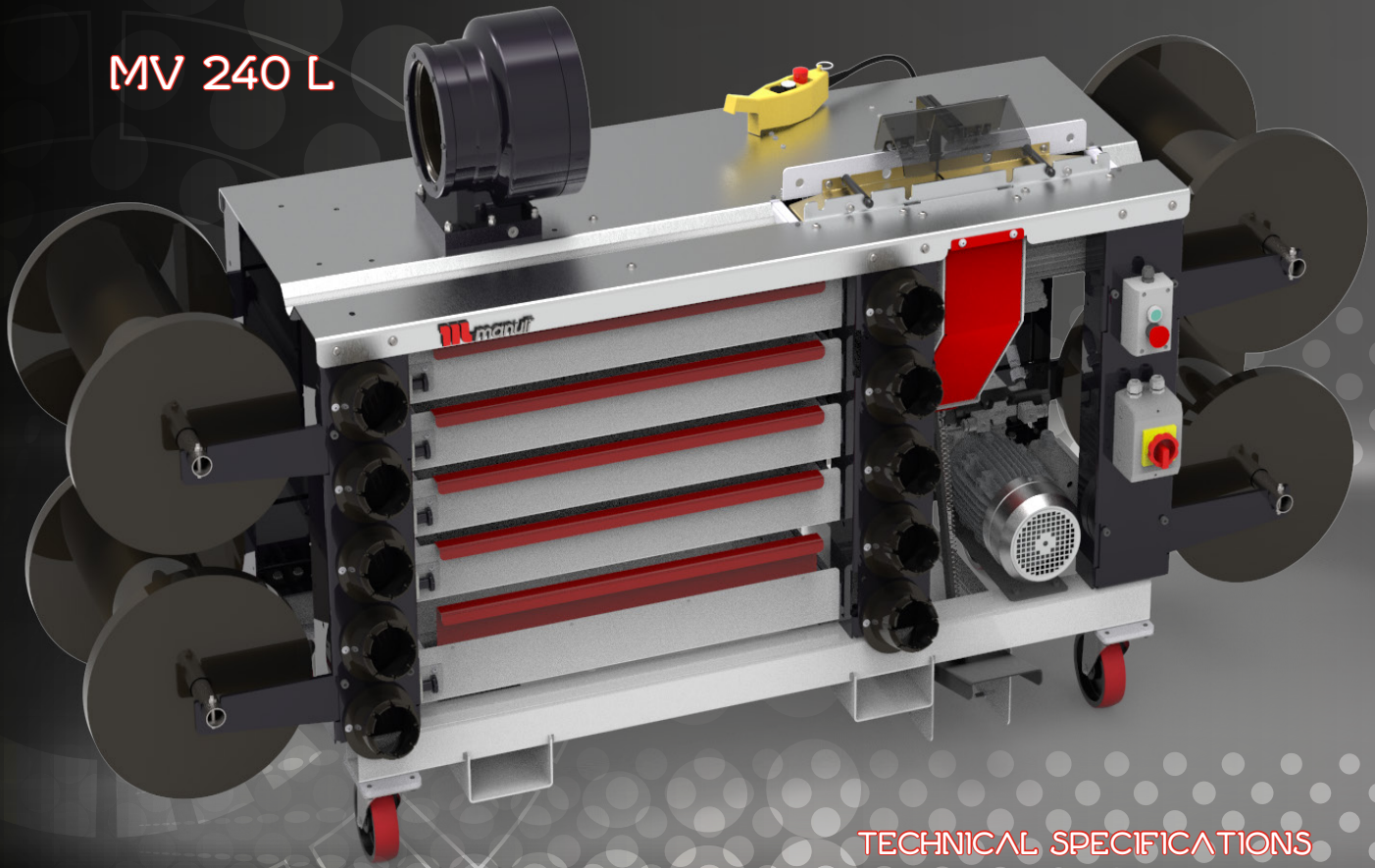
With 137 tonnes of crimping force, an incredibly compact footprint and the ability to rotate the crimping head to best suit the operator’s comfort and convenience, the MRB 137 EVO R is the beating heart of this version of the “hose room on wheels”. This model is suitable for WB & WS hoses up to 1 1/4”, and is supplied with a wide selection of dies\* and a quick die-change tool (optional).

Both models of the “hose room on wheels” come fitted with an integrated version of the M 30 CUT L cutting machine. Fitted with a scalloped blade for efficient, precise cutting with minimal smoke production, the M 30 CUT L also has a built-in dust collector and foot-pedal.

### TECHNICAL SPECIFICATIONS

VOLTAGES	NET WEIGHT
208/240V 3PH 60Hz 220/240V 1PH 50Hz 220/240V 1PH 60Hz 220/240V 3PH 50Hz 380/415V 3PH+N 50Hz	910kg
	DIMENSIONS
	2,487 x 810 x 1,661mm (98 x 32 x 65")
CRIMP FORCE	MOTOR
137t	6kW; 7kW; 8kW
CRIMP RANGE	STANDARD DIES
4-70 mm (0.157 - 2,756")	15, 18, 21, 24, 27, 30, 33, 36, 39, 42, 45, 48, 51
CAPACITY	
4WS - 1 1/4"	

## MV 240 L

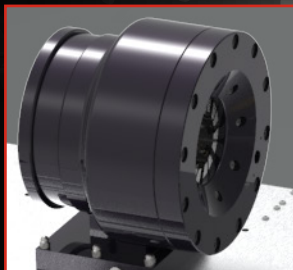


Outfitted with the MV 240 L crimping machine, this version of the “hose room on wheels” has the extra power needed to cut and crimp WS hoses up to 2”. This version of the “hose room on wheels” also comes with an expanded range of dies to suit the greater capacity and a remote controller for the crimping machine for those bulky, difficult to handle jobs.

### TECHNICAL SPECIFICATIONS

<b>VOLTAGES</b>	<b>NET WEIGHT</b>
208/240V 3PH 60Hz 220/240V 1PH 50Hz 220/240V 1PH 60Hz 220/240V 3PH 50Hz 380/415V 3PH+N 50Hz	950kg
<b>CRIMP FORCE</b>	<b>DIMENSIONS</b>
240t	2,487 x 810 x 1,370mm (98 x 32 x 54")
<b>CRIMP RANGE</b>	<b>MOTOR</b>
4-76mm (0.157 - 2,992")	5kW; 7kW; 8kW
<b>CAPACITY</b>	<b>STANDARD DIES</b>
4WS - 1¼"	15, 18, 21, 24, 27, 30, 33, 36, 39, 42, 45, 48, 51, 57, 62, 66, 70

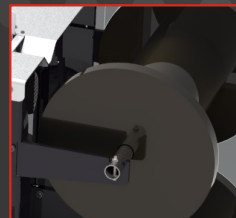
### ADDITIONAL FEATURES



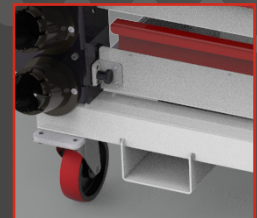
Robustly designed, with a high crimping speed and up to 240 tonnes of crimping force, the MV 240 L is just what you need to handle both the bigger and smaller assembly jobs efficiently. The built-in micrometer and radial die movement ensure accuracy and repeatability for WB & WS hoses up to 2”.



The tough, ball-bearing slide drawers with internal dividers are ideal for keeping a comprehensive selection of fittings, ferrules and essential tools close at hand.



Designed to allow quick loading and unloading of up to 4 different hoses, the hose spool storage also facilitates hose handling and management during use.



The robust, lockable castors ensure easy and convenient movement of the “hose room on wheels” whilst also ensuring stability during use. The built-in fork-lift channels also make it easy to safely lift the unit on and off vehicles for use in on-site maintenance activities.